

HORIZON

— FOR THE YACHT OWNER WHO DEFINES DREAMS —

SUPERYACHT PERFECTION

The New FD110 Hits The Water

A New Horizon Powercat Model Unveiled

FD80 : Amphib

Touch-and-Go Helipad Equipped



*Horizon Captains and
Owners Share Their Stories*



HORIZON
E SERIES

SPOTTED

STYLIN' SPORTFISH

Who says luxury yachts can't run with the sportsters?! This Horizon E Series motor yacht was spotted keeping pace with its sportfish competition at the start of the annual Bisbee's Black & Blue bill fishing tournament in Cabo San Lucas.

CEO MESSAGE

SOVEREIGN INTERDEPENDENCE

With the eyes of the world closely focused on the

Russian invasion of Ukraine, there are those that may ask, “Will Taiwan be next?” While this is not a concern shared by the Taiwanese people, judging by some recent conversations I’ve had with clients, I feel it important to provide an explanation as to why. Irrespective of the obvious and significant differences between the Russian/Ukraine conflict and a theoretical conflict between China and Taiwan, a war between China and Taiwan is next-to-impossible. Let me share our thoughts:

First, since the founding of the People’s Republic of China in 1949, Taiwan has never been under Chinese rule. The Taiwanese people have never paid a single tax to China, and during these 70 years Taiwan has never provided a provocation that China could use as a legitimate reason for invasion.

Second, unlike the geographic proximity between Russia and the Ukraine, Taiwan and China are separated by the 110-mile-long Taiwan Strait, which is famous for its treacherous sea conditions. At its narrowest point the Strait is still 81 miles in width, and crossing this body of water is never an easy task, regardless of the vessel used.

Third, Taiwan has a very strong Air Force and missile system, which it has been actively reinforcing for the past 50 years. Some describe Taiwan as a “hedgehog,” which means it’s never an easy target to swallow.

Fourth, not only does Taiwan enjoy a significant business relationship with the U.S. and many other Western countries, Taiwan dominates the global marketplace as the world’s largest semiconductor producer. These strong business ties create a diplomatic



bond between Taiwan and the rest of the world, further strengthening its sovereignty.

Fifth, Taiwan and China itself share a very close nongovernmental relationship. There are over one million Taiwanese business people living and working in China and over 100 flights traversing the two regions every day. China can credit its thriving economy to Taiwan’s influential embrace of Western capitalism and on this basis alone, neither Taiwan nor China want to damage this relationship and sabotage our/their prosperity.

Finally, war is expensive. And if the Russia/Ukraine situation is demonstrating anything, it is that the potential costs of conflict may not be worth the economic rewards of peace. Taiwan’s economic growth rate in 2021 reached its highest point in the past 11 years; the stock market just achieved an all-time high, and our export trade and currency remain very strong. Despite the verbal dispute that has existed between the two regions for years, it is our firm belief that continued economic growth and strong business relationships will continue the interdependencies – and diplomacy – between nations.

John Lu
Horizon Group CEO

HORIZON

Founded in 1987, Horizon Yachts has celebrated 35 years as one of the largest luxury yacht builders in the world as well as the number one builder in the Asia Pacific region. During these three decades, Horizon has delivered over 870 luxury yachts, with more than 230 of these over 80 feet in length. Popular models ranging from 52 to 150 feet include motor yachts, superyachts, power catamarans, expedition yachts, and fast displacement motor yachts.

PUBLISHER
John Lu

MARKETING DIRECTOR, HQ
Joey Lu

MARKETING DIRECTOR, U.S.
Elise Moffitt Caulder

EDITORIAL COORDINATORS
Andrew Hsu, Lily Li, Lisa Yang

SUPERYACHT CREATIVE

EDITORIAL DIRECTOR
Rebecca Cahilly-Taranto

CREATIVE DIRECTOR
Richard Taranto

All particulars in this magazine are believed to be correct but cannot be guaranteed. No part of this publication may be reproduced or duplicated without written permission from Horizon Yachts.
©Horizon Yachts 2022. Advertising opportunities: marketingcenter@horizonyacht.com. Letters to the editor: marketingcenter@horizonyacht.com.

The Best Just Got Better



THE TRI-DECK FD110

VOLUME. VIEWS. VERSATILITY.

Head-turning style, impressive volume and a new tri-deck configuration define the FD110, a five-stateroom yacht designed with a High-Performance Piercing Bow and hull design and built with the latest in advanced composites technologies. From interior volume to exterior views to all-around versatility, the best just got better with the tri-deck FD110.

FD: THE WORLD'S FASTEST GROWING YACHT SERIES

USA

+1 561 721 4850
horizonyachtusa.com

EUROPE

+34 971 673 508
horizonyachteurope.com

AUSTRALIA

+61 7 5577 9009
horizonyachtaus.com



HORIZON
WORLD CLASS YACHTS

// CONTENTS

2 CEO Message

NEW WAVE

8 Yard News

16 Horizon Power Catamaran PC68

A spacious new model from Horizon Power Catamarans is offered in multiple configurations, with the option for an Open Salon or On-Deck Master layout.

32 Feature Yacht: Of Land and Water

Built for an American owner, the new Horizon FD80 Amphib features an innovative touch-and-go helipad.

DESTINATION SPOTLIGHT – ABACOS

Rising and rebuilding, the Abacos offer a touch of true Bahamian culture, with a flair that harkens back to the island's British Colonial roots.



HORIZON LIFE

42 Owner Experience: Vindicated

The path that led repeat Ocean Alexander owners to build their first Horizon yacht was lined with coincidental connections.

48 Owner Experience: A Just Life

Grant and Irene Taylor are avid "boaties for life," savoring every aspect of the on-water lifestyle aboard their Horizon E73, Justified.

54 A Captain's Perspective: Captain Brendan Emmons

Taking over a new build two months prior to the 2020 COVID-19 lockdown would test the mettle of any captain.

61 Calendar of Horizon Global Events

62 2022 Palm Beach International Boat Show Re-cap

66 Upcoming Boat Show: Sanctuary Cove

80 Coming Soon: The Brand New Horizon FD90 Skyline



ON THE COVER
The magnificence of the brand new Horizon FD110 is captured during sea trials.

22

Feature Yacht:

Superyacht Design Perfection

The newly launched tri-deck FD110 represents the amalgamation of years of precise engineering, talented design and knowledgeable owner involvement to emerge as the flagship model for 2022.



PAID ADVERTISEMENT

GARMIN.

360 SURROUND VIEW CAMERA SYSTEM

Get a bird's-eye view without leaving the helm



台灣總代理 - 海科實業 MARINEER CO., LTD.

TEL: +886 7 8061575

Mail: inquiry@marineer.com

Authorized distributor for :

EmpirBus
A Garmin Brand

FUSION
A Garmin Brand

GARMIN.

HUMPHREE
Trim and stabilization systems

ECHOPLOT

KVH

NEW WAVE

ALL OF THE LATEST NEWS FROM THE YARDS



NEW LAUNCHES // TECHNOLOGY AND INNOVATION // FUTURE DESIGN CONCEPTS →

DEFINE YOUR HORIZON

Yard News

Steady orders and efficient production keep the bays full at the Horizon shipyards, with multiple sales and four new launches ready to deliver to the U.S. and Australia.

SOLD TO AUSTRALIAN OWNERS

FD75 Skyline Hull Four



The Horizon FD75 Hull Four is the first of the entry-level FD model to be built for Australian owners and as such the first to be delivered to the continent. This is the first Horizon build for the experienced owners, who selected the yard for its ability to customize the yacht to their standards – customizations that included the incorporation of the first Skyline configuration for the model.

To suit their active cruising lifestyle, the owners specified a three-stateroom layout for the 77' 8" yacht comprising the semi-on-deck, full-beam master stateroom with two large full-beam guest staterooms on the lower deck.

The owners were heavily involved in the design process and worked in tandem with both the Horizon Yacht Australia (HYA) team and the yard's in-house design center to execute a sophisticated and modern interior featuring satin Acacia wood complemented by Michelangelo marble stonework throughout.

The stonework serves as a focalpoint in the galley area, where it is both the backsplash and the feature stone of the center island with waterfall edges. A slatted feature wall disguises the full-height appliances and divides the galley area from the forward master suite, which is accessed via three steps down.

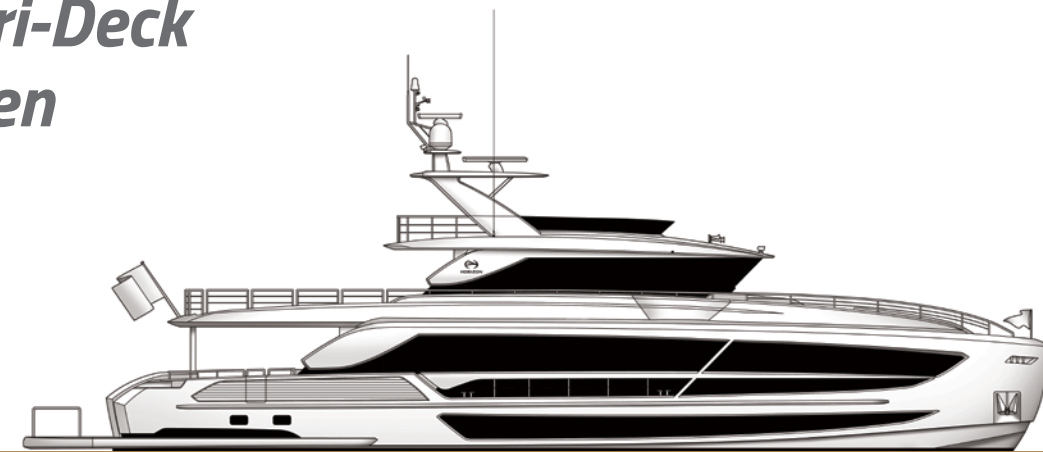


On the lower deck, a spacious laundry room is complemented by two additional staterooms forward of the engine room. Each comprises the yacht's full beam and features large closets and en suites. A beach club with a lounge area and dayhead resides aft of the engine room.

A floating interior staircase in the main salon leads to the enclosed skylounge on the uppermost deck which features a helmstation with three fixed helm chairs with a comfortable window side lounge seating and dayhead in the lounge area. The large open boat deck offers plenty of space for entertaining with tender storage aft. Settees for relaxing and sunbathing are positioned on the foredeck.

SOLD TO AMERICAN OWNERS

FD100 Tri-Deck Hull Seven



A second tri-deck FD100 is now in build for American owners who specified a design that emphasizes entertainment with family and friends. The experienced owners have made numerous customizations throughout, starting with the aft deck that features a large seating area with a Hi/Lo table, an electric fold-down 65" television to port, a full bar with two fixed barstools to starboard and plentiful storage, including a rod holder.

Highlighted by modern elements that add visual interest, the main salon offers a comfortable lounging area and extra seating with an L-shaped sofa and a dayhead aft. The dining area comprises a large table for ten while the spacious, fully equipped galley includes a small seating area. A built-in wine cooler with glass storage is positioned to starboard. A hallmark of the FD Series, the full-beam master stateroom is situated furthest forward on this deck and features a large his-and-hers ensuite and ample closet space. Four further ensuite staterooms including three queen-size VIPs and a convertible twin are positioned on the lower deck, which sees the crew quarters for six with a private crew mess situated aft of the engine room. A dedicated beach club designed with a bar as well as space for bike and diving gear storage provides comfortable access to the water via the 2,500lb hydraulic swim platform. Here the owners also specified a fishing setup including an insulated box, Eskimo ice system and large storage locker for rods and reels.

The customization is most evident within the enclosed skylounge, which the owners specified with a Hi/Lo entertainment console housing an 85" television positioned just aft of the wheelhouse to provide privacy and separation between the crew and

guest spaces. The guest area features a curved bar and dayhead facing a large L-shaped settee with a Hi/Lo table, while the boat deck aft houses a Jacuzzi tub with a counter bar and stools and space for tender and toy storage furthest aft. The lounging and entertaining continues on the foredeck, which offers additional seating and sunbathing opportunities shaded by sun awnings. The owners customized the uppermost deck by eliminating the helm station to create an enviable al fresco dining area with a table for ten, buffet, wet bar, seating and sunpads.

The owners plan to cruise the East Coast after taking delivery in the Spring of 2023.



SOLD TO AMERICAN OWNERS

FD90 Skyline Hull 27



This is the first yacht build project for the first-time Horizon owners.

First-time Horizon owners have contracted a new FD90 as their first yacht build project. The new FD90 will feature a Skyline configuration, which offers a wheelhouse with three helm chairs and a seating/dining area within the enclosed section of the bridge deck, while a spacious boat deck comprises a full bar, L-shaped seating and dining, and a large Jacuzzi tub, with plenty of space to store the tender aft. Another entertaining area is specified for the foredeck, which will feature refrigeration, storage and a spacious seating and lounging area.

On the main deck, the owners opted to remove the standard staircase on the starboard side of the aft deck to allow for a wet bar. The main salon will offer sumptuous seating with a dayhead aft. A fixed dining table is specified for formal dining just aft of the large galley, which can be closed off from the salon and dining area for privacy. A hallmark of the FD Series, the full-beam master stateroom is positioned furthest forward on this deck.

The owners selected a four-stateroom layout to allow for three large VIP cabins on the lower deck along with a spacious laundry and storage room with refrigeration. Two crew cabins and a fully equipped beach club are situated aft of the engine room.

This FD90 is due to launch in time for the Horizon Open House in January 2023. Upon taking delivery, her owners plan to cruise Florida, The Bahamas and the Northeast.

A new FD75 has launched for a repeat Horizon owner. This is the second FD75 to be built for the American market and the first in the U.S. to showcase a Skyline configuration.

Having previously built an E73, the client returned to Horizon for the high quality and craftsmanship, as well as the yard's attention to detail and capability for customization. That customization begins on the main deck aft, where dedicated storage areas for items such as fishing rods and ladders have been incorporated. A custom entry door leads into the main salon, which is highlighted by a large custom sofa fitted with storage underneath and a coffee table with a lift mechanism that also offers storage. A dayhead is situated to port and the remainder of this area features a custom cabinet/bar area with a Hi/Lo television, an icemaker and wine cooler and bottle storage.

The owners requested that the galley be positioned furthest forward on the main deck, thereby eliminating the standard raised pilothouse design and presenting an open-plan feel. A custom dining table with an 18" insert accommodates interior dining adjacent to the fully equipped open galley area, which features a large

island and an atrium ceiling.

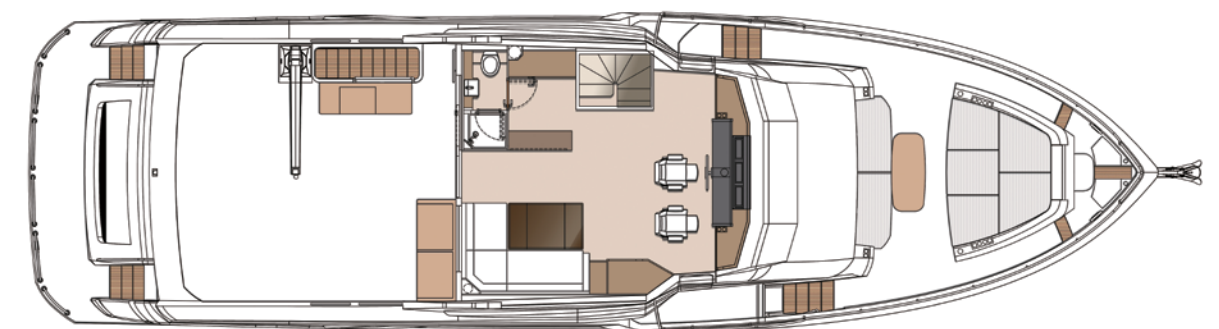
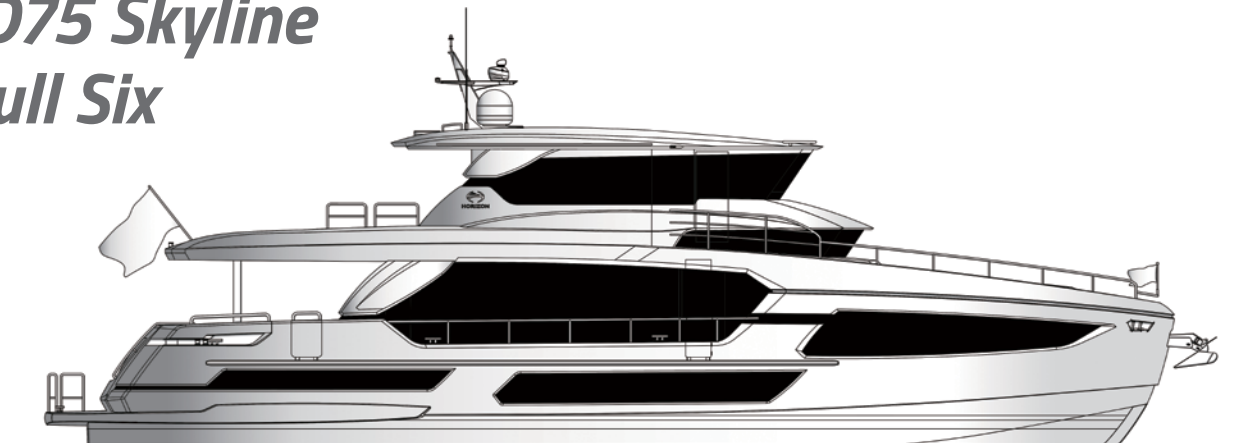
The master ensuite stateroom is positioned furthest forward and accessed via a few steps down from the galley area. This space has been customized with a vanity, multiple full-height hanging lockers, a custom chaise lounge and a fold-down television above the bed. Three further ensuite staterooms are found on the lower deck and comprise a midship VIP, a single twin to port and a queen stateroom to starboard. Crew quarters including a cabin, head and mess area feature aft of the engine room.

Positioning the wheelhouse on the upper deck allowed for a re-design of this entire space, which is enclosed to comprise the helmstation, a full head and a lounge settee with dinette. A Hi/Lo cushion insert for the dinette and a sliding enclosure top for the stairwell allows this area to be used as an overflow stateroom.

Specified at an overall length of 73 feet to accommodate the owner's slip requirement, this new FD75 is anticipated to deliver in the Summer of 2022, after which the owner plans to spend the time aboard cruising Florida, The Bahamas and the U.S. East Coast.

SOLD TO AMERICAN OWNERS

FD75 Skyline Hull Six



Bridge Deck

V FORMATION

SOLD TO AMERICAN OWNERS

V68 Skylounge Hull Five

The fifth hull of the Jonathan Quinn Barnett-designed V68 model has launched and will soon be delivered to her West Coast-based owners. Sold by Emerald Pacific Yachts, this V68 features a four-stateroom layout that includes a full-beam master ensuite amidships, a convertible twin and a VIP in the bow on the lower deck as well as a crew cabin aft of the engine room.

The main deck comprises the salon with a spacious open-plan galley and country kitchen dinette forward. Heated granite floors and a center island add to the inviting nature of the space. The owners specified an enclosed bridge configuration that incorporates a large U-shaped seating area with a dinette and dayhead aft of the bridge.

SOLD TO AMERICAN OWNERS

V68 Skylounge Hull Six

Sold in cooperation with Nicholas Scherb of 26 North Yachts, this is the fifth V68 sold in the U.S. since the model was introduced.

The client was seeking a voluminous yacht in the mid-size range that would suit summer cruising with family and friends on the Great Lakes, and selected

the V68 Series design for its wide 19' 6" beam, three-stateroom-plus-crew layout and numerous outdoor entertaining areas.

For the upper deck, the owner selected an enclosed skylounge configuration and customized the boat deck to include areas for entertainment.

On the lower deck, the master suite will encompass the full beam amidships, with a convertible twin forward to starboard and a VIP queen furthest forward in the bow. Quarters for two crew are positioned aft of the engine room.

entertainment and fitted the boat deck aft with a bar and grill. When the tender is deployed, the space opens up for additional lounging and socializing under custom sun shades.

On the main deck, the owners designed the aft deck area with a dining table with a folding leaf, custom gates to the 1500lb hydraulic swim platform, and a bar with a window that opens into the salon.

The galley was an area of focus for these clients, who desired a convivial space for socializing and entertaining. They also specified three staterooms on the lower deck, comprised of a full-beam master ensuite, convertible twin ensuite cabin to starboard, and VIP ensuite in the bow.

Now in build, this V68 will deliver to her owners in the Summer of 2023.

SOLD TO AMERICAN OWNERS

V68 Skylounge Hull Seven

Sold in conjunction with Bay Marine, this is not only the first Horizon for the American owners, but also their first semi-custom yacht build.

The newest Horizon V68 will feature an enclosed skylounge configuration, which will be fitted with a dayhead, workspace and lounge area that converts to a bed. The clients prioritized onboard

Sold at the end of her build to a first-time Horizon owner who was drawn to the yacht's exterior styling and amenities to facilitate his cruising plans, the E90 features a four-stateroom-plus-crew layout with a large salon, dining and country kitchen on the main deck and an enclosed pilothouse with dayhead on the upper deck.

On the lower deck, the master stateroom spans the yacht's full beam amidships and features a full-beam his-and-hers ensuite. A large VIP is situated furthest forward while two convertible twins are positioned to port and starboard. Crew quarters for up to four are housed aft of the engine room, along with the beach club that doubles as a crew mess.

On the uppermost deck, the enclosed pilothouse features the console with two fixed helm chairs, a starboard-side dinette and a dayhead to port. The boat deck aft houses a large Jacuzzi tub and multiple seating and lounging areas, all of which can be shaded by sun awnings.

As of press time, the new E90 will be delivered to her owner who plans to cruise Southeast Florida, The Bahamas, and the Gulf of Mexico with his family. ➡



SOLD TO AN AMERICAN OWNER

E90
Hull 22



PAID ADVERTISEMENT



HUNG SHEN
PROPELLER

FPP • CPP & Shafting

宏昇螺旋槳

Newly Developed

End Plate Propeller (ENDP) 端板螺槳

Low Noise Low Vibration



Give you a more
Comfortable yacht life



New Design Silent Submarine
ENDP Propeller

Hung Shen Propeller Co., LTD (Headquarter)

Tel: +886-8-869-0111 Fax: +886-8-869-0333

info@hungshenprop.com www.hungshenprop.com

HS Marine Propulsion LLC (U.S.A. Branch)

Tel +1 (228) 875-6111 Fax +1 (228) 875-6612

Vice President: James Travis Marketing Manager: Jake Travis

jtravis@hsmarineprops.com jake@hsmarineprops.com

www.hsmarineprops.com

Patent

Taiwan Pat. No.I515147

U.S.A. Pat. No.US10,155,575B2

Europe Pat. No.EP3508415A1

Japan Patent Pending

HORIZON POWER CATAMARAN PC68

This spacious new model from Horizon Power Catamarans is offered in multiple configurations, with the option for an Open Salon or On-Deck Master layout.

NEW MODEL



Ease of access is prioritized throughout the design, and walkaround side decks on the main deck lead to a lounging space forward, with an enviable Portuguese deck seating area with convertible Hi/Lo dinettes situated three steps above. Horizon PC68 clients are offered the choice of an open bridge or enclosed skylounge design, and the extended flybridge on this model allows for a variety of layout options while comfortably accommodating a 17ft, 100hp tender. This area comprises plentiful seating and lounging, a dayhead with shower, BBQ station, chest freezer, and a bar to port with fridge doors and a Scotsman icemaker. Forward of the helm, an innovative raised hatch and door accesses the aforementioned Portuguese deck.



Following a record-breaking year of sales, with the milestone 50th hull sold, Horizon Power Catamarans proudly announces the newest addition to its popular series of power catamarans. Positioned at the head of the multi-hulled PowerCat (PC) range that begins with the entry-level PC52 and includes a PC60 and a custom PC74 flagship, the new, ultra-spacious Horizon PC68 model has been meticulously planned to meet and exceed the cruising needs of discerning boaters.

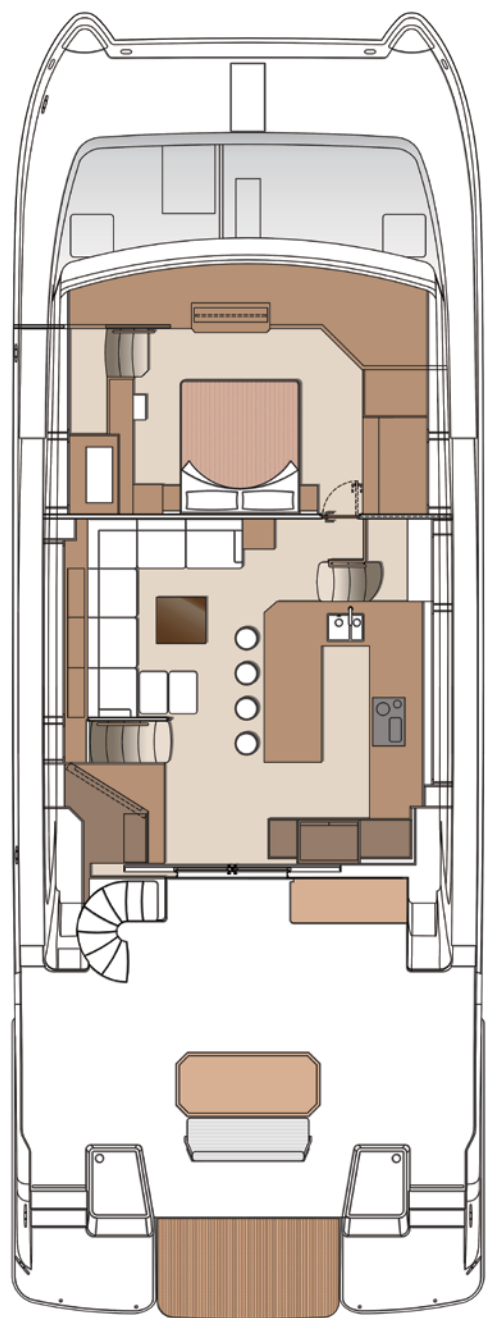
Multiple new design features define the new PC68, which offers a four-stateroom layout with the option for an expansive open-plan salon or an on-deck master stateroom forward. The spacious aft deck hints at the interior volume provided by this model's 24ft 6in beam, and features an innovative folding stern section allowing for a variety of seating configurations as well as convenient walkthrough access to the Hi/Lo swim platform.



THIS PAGE
One of the new, unique features of the new PC68 model is the forward Portuguese deck, which can be accessed from either the main deck or flybridge.

PC68 LAYOUT OPTION: On-Deck Master

The PC68's on-deck master stateroom configuration option positions the master furthest forward on the main deck, with a large ensuite below.



PC68 Basic Specs

LOA

68' (20.73m)

Beam

24' 6" (7.47m)

Series

Power Catamaran (PC)

Interior Design

Horizon Yachts

Exterior Styling

Horizon Yachts

Engines

Twin MAN i6 850hp

The PC68's on-deck master stateroom configuration option sees a full-beam master with wraparound windows furthest forward on the main deck, with the salon and galley with large island bar positioned aft. Steps within the master access the large ensuite with dual basins below. A convertible twin ensuite shares the port hull, while to starboard a VIP king ensuite is positioned forward with the second convertible twin ensuite aft.



THESE PHOTOS
Wraparound windows lighten the master stateroom, while the yacht's elongated windows bring additional light to the lower level staterooms and master ensuite with dual basins.

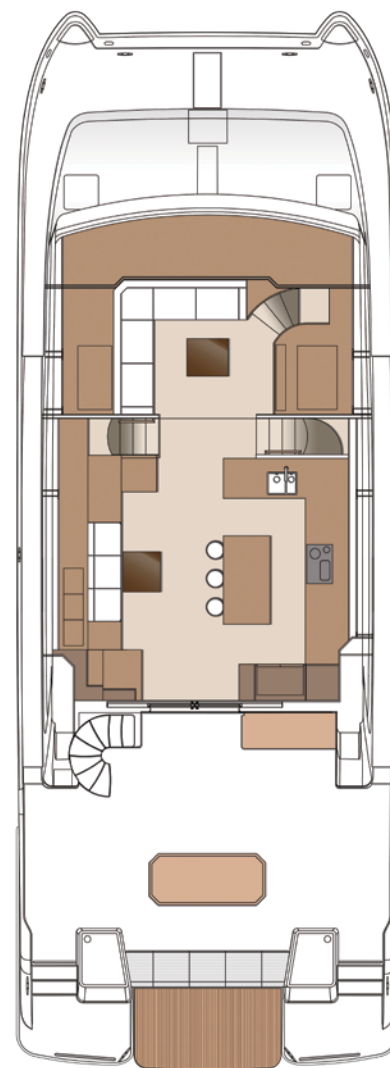


PC68 LAYOUT OPTION: Open Salon

The PC68 Open Salon configuration offers an expansive salon area with a large seating and entertainment space furthest forward four staterooms in the hulls.



Learn More About the
POWER CATAMARAN PC68



“The power catamaran design is extremely popular among experienced yacht owners who appreciate the comfort, stability and interior volume that the twin hull design affords, as well as the shallow draft for exploring the idyllic cruising grounds of The Bahamas and Caribbean,” says Richard Ford, founder and CEO of The Powercat Company. “We are particularly enthusiastic about the new PC68, as it brings to the market next-level design and engineering in a sophisticated and spacious package that will be appreciated by our discerning clientele.”



The first Horizon PC68 will feature an open-plan salon and will make its global debut at the 2023 Horizon Yachts Open House in Taiwan, followed by a U.S. debut at the 2023 Palm Beach International Boat Show.

For more information on the Horizon PC68 or any Horizon Power Catamaran models, please contact Richard Ford at +1 954 803 8102 or email richard@powercatco.com.

Alternately, the PC68 Open Salon configuration offers an expansive salon area, with a large seating and entertainment space furthest forward. This layout sees all of the staterooms positioned below, with two king ensuite staterooms forward in the hulls and two convertible twin-to-king ensuite cabins aft to port and starboard, respectively.

Defined by award-winning advanced composites SCRIMP system construction that yields the most durable, lightweight hull marrying a perfect glass-to-resin ratio, with rigorous testing by the Horizon shipyard's pioneering Non-Destructive Methods, the Horizon PC68 is fitted with twin MAN 850hp engines as standard to guarantee quiet, stable and efficient cruising. Uniquely, the options for client customization extend well beyond soft goods and interior layout.



THESE PAGES

The Open Salon layout allows for a bright and spacious open-plan living area on the main deck with plentiful seating and entertaining areas.



THESE PAGES

The first PC68 will feature an Open Salon layout and will make its U.S. debut at the 2023 Palm Beach Boat Show.

Superyacht Design Perfection

FEATURE YACHT



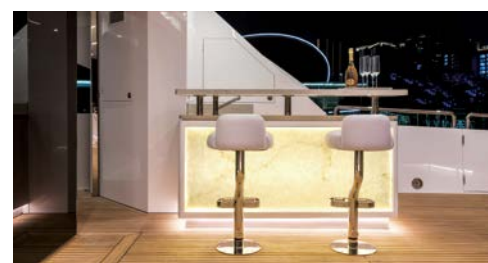
The newly launched tri-deck FD110 represents the amalgamation of years of precise engineering, talented design and knowledgeable owner involvement to emerge as the flagship model for 2022.



As the Cor D. Rover-designed Fast Displacement (FD) Series has evolved in the five-plus years since the first FD85 was unveiled to the world, each subsequent build has steadily built upon the positive features of its predecessors. Owner customizations led to innovations that have become standard, rounding out an exceptional range of yachts that has seen 55 units sold or in build in a record timeframe. The latest and largest build to date from the series known for its pioneering high-volume interior and unrivalled stability and performance, the brand new FD110 model is the current embodiment of the best in high-volume superyacht design.



The Series' characteristic full-height windows running from bow to stern punctuate the exterior styling of the tri-deck yacht, whose striking presence is further amplified by its elongated exterior deck areas. Guests of the yacht are welcomed via Besenzone passerelle to the aft deck that spans the yacht's 24' 6" beam and conveys a presence indicative of a much larger build. A spacious seating area here with both fixed and loose furniture is served by a full bar with two bar stools to starboard. A Hi/Lo extendable table allows for the space to convert into a dining area protected with a sun shade aft.



THIS PAGE
Distinguished by its long sleek lines and expansive windows, the new tri-deck FD110 is a sight to behold.



THIS PAGE
Deck areas are plentiful, and the aft deck welcomes guests to the main level with a large convertible table and bar area.



Entertainment and relaxation are the emphasis of the FD110's design, and through the fully opening salon doors, the main salon provides a voluminous oasis where a large L-shaped seating area invite conversation and enjoyment of the views through the large windows. A conveniently situated dayhead services both the interior and exterior on this deck, and a convertible dining table serves a multifunctional role as both a breakfast bar and a formal

interior dining table. Sliding glass doors provide an al fresco feel to the dining area, and sculptural overhead lighting by Italian firm Slamp punctuates the rich, sophisticated interior décor highlighted by washed wenge wood with dark oak and walnut accents. Forward, a fully-equipped professional galley gleaming with beautiful Cambria stone can be open or completely closed off from the guest areas for privacy.



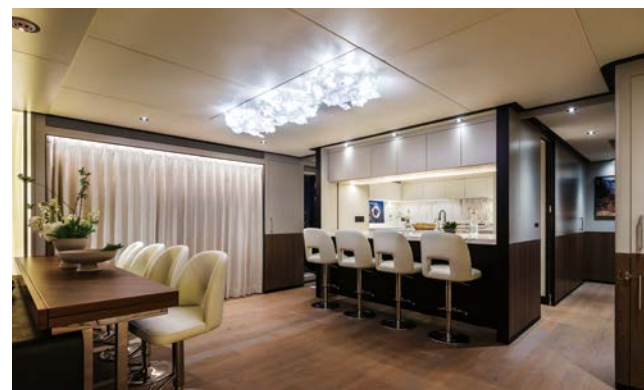
Drawing its inspiration for the luxurious interior from trending residential design, the style throughout emphasizes natural finishes, subtle coloring and clean, modern elements. Stained walnut mimics the coziness of aged wood, while muted lacquer in French grey lightens up the tone overall. Polished chrome accents and splashes of lively colors round out a design that is both warm and elegant.



THESE PAGES
The main deck showcases the benefits of the FD Series' high-volume design, where large windows, a contemporary style and artistic details round out an exceptional build.

Inspired Feature

CONVERTIBLE DINING





One of the signature design features of the FD Series is the on-deck master stateroom, and that aboard the new FD110 does not disappoint. Expansive views from the large windows to port and starboard surround the king-sized bed, and a spacious his-and-hers ensuite with grand shower is positioned forward. Wrapped in the classic natural styling and sophisticated décor, the master is a splendid retreat in which one can relax and unwind after an active day.



Crew quarters for up to six are situated furthest aft and include a double Captain's cabin and crew mess. A large storage locker features a hydraulic door that accesses the yacht's full-beam Hi/Lo swim platform. An internal stairway conveniently links the crew area with the aft deck above.



On the lower deck, four further ensuite staterooms comprise two mirrored VIPs amidships, a convertible twin to port and a third VIP in the bow. A spacious dedicated laundry room conveniently serves this area. Aft, the air-conditioned engine room houses the yacht's machinery and twin CAT C32A 1,900hp engines. This yacht is equipped with twin Onan 55kW gensets and a SeaXchange & Spot Zero 1,800gpd/200Z combo unit watermaker among its many high-end systems. Zero speed stabilizers, Humphree interceptors and 65hp bow and stern thrusters augment the superior performance provided by the yacht's High-Performance Piercing Bow and hull design.



THESE PAGES
Accommodations include the spacious on-deck master with his-and-hers ensuite as well as four further ensuite staterooms and crew quarters for up to six on the lower deck.



Specifications

LOA

109' 6" (33.37m)

Beam

24' 6" (7.46m)

Series

Fast Displacement (FD)

Interior Design

Horizon Yachts

Exterior Styling

Cor D. Rover

Engines

Twin CAT C32A 1,900hp

Thoughtfully designed for entertainment and relaxation, the FD110 offers enviable areas for both on the bridge and upper decks. The enclosed skylounge offers plentiful seating as well as a wet bar with a wine cooler and a dayhead aft. Equipped with custom Garmin navigation equipment and twin helm chairs, the forward wheelhouse features a Hi/Lo window and door, allowing the space to be open to or closed off from the skylounge as desired. Twin wingstations assist in docking and the yacht's walkaround side decks lead to the forward entertainment area and boat deck aft.

Horizon's capability to maximize the foredeck areas of its yachts is another distinguishing feature of the FD Series, and aboard the new FD110, the foredeck is fitted out with a spacious sunpad, seating and dinettes and a large Jacuzzi tub. Plentiful storage, a refrigerator and icemaker set up and removeable sunshades make this a compelling exterior lounge area.



On the boat deck, an L-shaped lounge converts to a full sunpad protected by an electric awning. The area is equipped with a full BBQ and space for storage of a 17' tender is furthest aft.

This is the first tri-deck FD110 and the uppermost deck provides yet another exceptional exterior area fitted with multiple sunpads, seating and a wetbar for al fresco relaxation amidst the panoramic views. Shaded by a bimini top, the area is also equipped for plug-in remote control maneuvering and docking.

Offering the full package of space, style and sophistication, the new FD110 is indeed superyacht design perfection. She is on schedule to make her U.S. debut in the Summer of 2022. ➡



THIS PAGE
The well-equipped wheelhouse (above) can be separated from the enclosed skylounge (top) for additional privacy.



THIS PAGE
The tri-deck configuration allows for multiple al fresco areas, from the spacious boat deck (top) to the foredeck lounge area with Jacuzzi (left), to the inviting upper deck (above and middle).

OF LAND AND WATER

Built for an American owner, the new Horizon FD80 Amphib features an innovative touch-and-go helipad.



Customization is a cornerstone of the Horizon Yachts philosophy, and the company proudly employs a talented engineering team to consider advanced customization requests – many of which are first-time features aboard current models. Recently launched, the sixth hull of the popular FD80 model offers a touch-and-go helipad on the boat deck, which is the first time this feature has been engineered for this model.



FEATURE YACHT



*Learn More About
the FD80 Amphib*



When not serving as a touch-and-go helipad, the expansive boat deck accommodates freestanding furnishings for the ultimate in sun lounging.



THESE PAGES
Matte oak and walnut woods create an atmosphere of calm throughout the spacious interior.



The design of the FD80 appealed to the first-time Horizon owner for its four-stateroom layout, on-deck master suite, aft beach club and enclosed skylounge. A generous aft deck fitted with a built-in settee and a freestanding dining table for eight segues through fully opening glass doors into the open-plan main salon, where matte oak and walnut create an atmosphere of calm.



Flexible in form and function, the main deck blends loose and convertible furniture for multipurpose use.

ABOVE
Space is maximized with a convertible dining table that serves as a breakfast bar and shares stools with the galley counter.



A convivial off-white leather L-shaped sofa and seating area invite relaxation in the main salon. To port, a convertible table serves multiple roles as a work table, breakfast bar or interior dining table and a dayhead is positioned aft. The galley forward features a privacy window that can be opened or closed, with a counter overhang and bar stools for conversing with the chef. The master ensuite is situated forward and has been designed with a spacious walk-in closet and a large dramatic overhead skylight.

Three additional ensuite staterooms comprising two VIPs in the bow and to port and a convertible twin to starboard are situated on the lower deck, while spacious crew quarters for four aft of the engine room. A fully equipped beach club invites interaction with the sea from the Hi/Lo swim platform that can accommodate the yacht's tender.



THESE PAGES
Generous headroom augments the feeling of spaciousness throughout the guest accommodations, which include a full-beam on-deck master suite (top images).



ABOVE
The beach club is a signature design feature of the FD80 and offers a comfortable relaxation area close to the watersports and the Hi/Lo swim platform.



On the upper deck, the owner opted for an enclosed skylounge configuration aft of the helm station, with the entire aft portion of the boat deck dedicated to the yacht's helipad. This feature has been incorporated for an owner of an FD85, but is the first to be designed aboard an FD80 model. On this hull, a hydraulic, folding hardtop overhang allows for convenient rotor blade clearance. Additional seating and dining with a Hi/Lo table is designed for the foredeck.

Christened *Amphib*, the new FD80 will be delivered in the Summer of 2022, after which the owners plan to cruise The Bahamas and both coasts of the United States. ➡

THESE PAGES
Engineered to accommodate the owner's helicopter, the spacious boat deck doubles as an expansive entertainment area, with an additional relaxation area forward (top left).



Inspired Feature

HYDRAULIC FOLDING OVERHANG



Specifications

LOA

81' 8" (24.91m)

Beam

22' 6" (6.87m)

Series

Fast Displacement (FD)

Interior Design

Horizon Yachts

Exterior Styling

Cor D. Rover

Engines

Twin MAN V8 1,300hp



ABOVE
The owner specified a skylounge configuration with freestanding furnishings for a comfortable area aft of the helm.

PAID ADVERTISEMENT



ARITEX
Essence of Luxury

Customized Stainless Steel Solutions
www.aritex.com.tw

HORIZON LIFE

— DREAMS DEFINED. LIFE ON THE WATER. —



DESTINATIONS // HORIZON OWNERS // EVENTS // TOYS & EQUIPMENT →

DEFINE YOUR HORIZON

©ANDREW DONOVON@PHOTOBYSKIP

OWNER EXPERIENCE

Vindicated

The path that led repeat Ocean Alexander owners to build their first Horizon yacht was lined with coincidental connections.



@DENNIS AND CATHY GRAHAM

Dennis and Cathy Graham began boating in 1990, after selling a sub-company that they owned and deciding that they could put a few hours per week toward something besides running the company they founded. Based in the boating paradise that is the Pacific Northwest, the Grahams solicited advice about their first boat purchase.

“We were told to buy ‘used’ because the boat would be ‘properly fitted and all the bugs would be worked out,’” recalls Dennis. “Wrong!”



THESE PAGES
The Grahams discovered the Horizon V68 model at a boat show and were intrigued by the yacht's efficient Jonathan Quinn Barnett design.



// Bayliner Bugaboos

The Grahams' first boat purchase was a 32ft 1989 Bayliner 3288, which was for sale in a boathouse in a marina.

“The first thing we learned was that the previous owner's wife didn't like boating so he just used it in the boathouse,” they recall. “The next thing we discovered was that he failed to pump out the holding tank!”

The Grahams' first order of business was to change the boat's entire plumbing system, including the holding tank. “Being novices, we also discovered that she needed a VHF radio, radar, GPS... you name it!”

Still, the couple ran that boat every weekend and every holiday for several years. They even had a diesel heat system installed to handle the chilly Pacific Northwest weather. But soon, it was time to move on, and they sold the Bayliner – one of the main reasons being that she only had one head.



@DENNIS AND CATHY GRAHAM



THESE PAGES
Vindicator features a three-stateroom layout within which the Grahams requested an enclosed skylounge, multiple heads and plenty of storage.

// OA Days

From the 32ft Bayliner the Grahams ordered a 1993 Ocean Alexander 44 and traveled to the OA yard in Kaohsiung, Taiwan for the pre-delivery.

They then moved up to a new 54ft OA and once again handled the design and pre-delivery in Kaohsiung.

Then came a 64ft OA and back to Taiwan they went. Finally, the couple moved up once again to a 72ft OA and did the space planning and visited the finished product in China.

But at the 2019 Seattle Boat Show, a new vessel would catch their attention as it made its debut. Penned by Seattle-based designer Jonathan Quinn Barnett, who counts among his accomplishments the design of the 414ft *Octopus* – the world's largest private yacht at the time of her launch – the new Horizon V68 was purposefully created to comfortably accommodate a boating couple without crew within a space fitted with as many superyacht amenities as possible.

The Grahams were intrigued. “We liked the design and layout and also that it was designed by the marine architect whose office was two blocks from our condo in downtown Seattle!”

The couple turned to OA to inquire whether anything similar was pending in one of its yards. “They said no.”



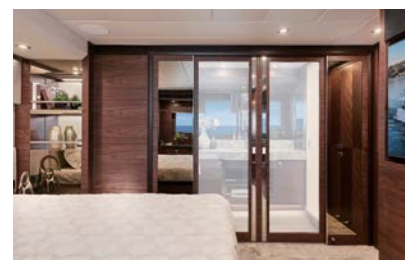
// Vis for Vindicator

The Grahams turned to their local Horizon representative and agreed upon a price. Since the boat would be based in the Northwest and the Grahams were all-too-familiar with the weather conditions in the region, they requested a re-designed bow area and elected to enclose the bridge and use it as a second salon/office. “We also removed the ‘party area’ which would be covered by canvas 95% of the time the boat was out of the boathouse, anyway.

“Horizon designed a wonderful storage system that is huge,” says Dennis. “As you know, storage is a premium on boats. We removed the lower helm station and now can feed another dozen in that area. You must remember that this Horizon, the *Vindicator*, parties six, feeds four and sleeps two!” he laughs.



THIS PAGE
The Grahams re-designed the bow area to suit the Pacific Northwest climate, and the three-stateroom layout allows for plentiful space and storage on the lower deck.



THIS PAGE
The Grahams have enjoyed several months of cruising aboard their new yacht already.

// Serendipity

When the Grahams began working on their order for the Horizon V68, they requested direct communication with the yard as that had been their experience with Ocean Alexander.

“Somehow we discovered Vision shipyard president Austin Lin,” they recall. “We asked him if he knew the manager of the OA yard and he said yes, that he had hired him when he worked at OA!

“We now believe that Austin worked on at least one of our OAs while he was working with that company, so from the beginning, we had a great feeling of trust. We were able to communicate with Austin and his very resourceful staff on a daily basis – even to the point of cell phone calls if quick answers were needed.”

The Grahams had every intention of visiting the yard during the design and completion process, but the COVID-19 pandemic struck and no visits were allowed.

“Austin’s engineers, designers, and doers started sending us their suggestions for materials both soft and hard. We added and subtracted hundreds of things on the *Vindicator* through their suggestions or ours. All the while, we all worked together as a fine-tuned machine. Never once were we unhappy with anything the yard did.”

When the couple took delivery of their new yacht in 2021, they spent only eight days short of four months onboard. “This was pretty good, considering we could not travel into Canadian waters!”

This year, the couple says they plan to bring the *Vindicator* out of the boathouse in Tacoma in early May and not return until mid-September. Happy cruising, Cathy and Dennis! ➡



© DENNIS AND CATHY GRAHAM

OWNER EXPERIENCE

A Just Life

Avid “boaties for life,” Grant and Irene Taylor are savoring every aspect of life on the water aboard their Horizon E73, Justified.

THESE PAGES

Grant and Irene, now proud Queenslanders, are avid boaties and love heading north to The Whitsundays aboard *Justified*.



THESE PAGES

The couple has grown in boating over the years, from a canoe to “the fastest Horizon on the east coast.”

A proud “Ten Pound Pom”—as the beneficiaries of the assisted migration program between Britain and Australia that ran from 1945 to the early 1970s were known—Grant arrived in Western Australia (WA) in 1966 as a nine-year-old and took to Aussie life with gusto.

“The sunshine, the outdoor lifestyle, the beach, the ocean... there’s nothing like it,” he says.

Grant began his career as a welder in the North West—“the hottest job in the hottest part of Australia,” he recalls, and today oversees several businesses in the construction industry, spanning from specialized welding to personnel placement.

As it did for so many, the pandemic prompted a realignment of priorities and a sharper focus on what really matters: family, well-being and a life well lived. In late 2020, finally taking the leap of faith to cross coasts, Grant and his wife Irene relocated to Sanctuary Cove, their sights firmly set on exploring the Whitsunday Islands and the many attractions along the east coast.

"I don't think Queenslanders realize how good they've got it! The Great Barrier Reef and islands right down the coast provide protective waters."



ABOVE
Justified cuts an impressive profile on the azure waters of The Whitsundays.

"We've always had boats, whether it was messing about in a canoe as a kid or cruising in a 56-foot motor yacht," says Grant. "We'd seen Horizons at the Mandurah Boat Show and always found them an interesting proposition. The quality of the construction is second to none and they really are leaders in the superyacht finish for every vessel, whatever the size."

By February 2021, the Taylors acquired their first Horizon: an E73 named *Justified*. Out of respect for its mantle as "the fastest Horizon on the east coast," Grant and Irene chose not to re-name her.

"It's a strong name, a memorable name. It's fit for purpose. The boat's well-known to everybody as *Justified* and we feel the same way about owning such a fantastic boat—it's totally justified."

Upon taking ownership of their new yacht, the Taylors headed north to Airlie Beach, securing a berth at Coral Sea Marina and spending time getting to know their new vessel, while island hopping and discovering the myriad natural wonders of Far North Queensland.



THESE PAGES
And when the sun sets, the family gets the "barbie" going and Grant indulges in one of his many passions: cooking.



"It's an absolute boating paradise," says Grant of the Whitsundays. "I don't think Queenslanders realize how good they've got it! The Great Barrier Reef and islands right down the coast provide protective waters. In WA, conditions can get very rough. We have the strong easterlies in the morning and the dry south-westerly winds in the afternoon, known as 'the Doctor'."

For the Taylors, the leap that was spurred by the pandemic has allowed them to fulfill a lifelong dream. They have explored anchorages in Butterfly Bay, Nara Inlet, Tongue Bay and the legendary Whitehaven Beach. Their favorite spot to drop anchor is in the southern bays of Thomas Island, best accessed when the wind blows from the north.

"It's incredible," states Grant. "We kayak, stand-up paddle board, enjoy beach barbeques, swimming, fishing... Everything about the place is peaceful and perfect. When the wind changes, we move to the next bay. That's the best thing about owning a boat – we can change our backyard every day."

While Irene is not one to splash about, she is just as enamored with the boating lifestyle as Grant. "The social scene at every marina is fantastic. Airlie Beach is so laid back and welcoming. It's a friendly, relaxed village with so much going for it. That's one of the reasons we love the place," she says.

Grant loves the serenity of open water and has taken on a new hobby as well. "I love the motion of the ocean. I'm also right into fishing and I like to think I'm a bit of a cook." His specialty? Fresh-caught reef fish, fileted and crumbed, straight on the "barbie" with butter, lemon, garlic and herbs.

"We have a barbecue on the flybridge and on the transom as well. There's so much volume on this boat, plenty of storage, a full-beam master stateroom. We could live on it."

The step up to a 73-footer has not caused the Taylors any consternation. "It's a much bigger boat than we've had before, but I do the skippering myself. It's easier to handle than our smaller boats. It's so responsive and doesn't get blown around."

The 2021 Horizon Rendezvous held at Chance Bay in the Whitsundays was the ideal opportunity for the Taylors to meet other Horizon owners and share experiences with like-minded people. “The Horizon Australia team is great. They’re very helpful, nothing is too much trouble. They make us feel like part of the family”.

Justified is currently back on the Gold Coast for scheduled servicing at The Boat Works, the purpose-built refit and maintenance yard that Grant says is “more like a resort for your boat than a service facility.”



©GAVE THE TAYLORS THE

“We’re looking forward to taking off back north in the next couple of weeks,” says Grant. “We’re really excited to stop at all the islands we didn’t see on the way down. Lady Musgrave Island off Bundaberg has some amazing diving and marine life with many turtles.”

The Taylors’ customary route north is to cruise *Justified* up to Airlie Beach, then fly home to the Gold Coast and drive their car back. “There’s plenty to see up there,” says Grant of Queensland’s northern coastline, “whether it’s Airlie, Mackay, Cairns or Port Douglas. We plan to get a pen [berth] in Port Douglas in August for three weeks and use it as a home base to explore that end of the Queensland and Reef.”

Next year, the Taylors plan to take *Justified* to WA and sample some west-coast itineraries, including Ningaloo Reef and the Kimberley Coast, before heading over the top and back to Queensland.

“We have a place at Exmouth, which is beautiful. Ideally, we would like to take two to three months and maybe even visit Papua New Guinea, which isn’t far from Australia. We have a 7,000-liter fuel capacity, which at 8 knots gives us a gazillion nautical miles, and twin C32 engines at 1,600hp each of which can get up to 30 knots!” says Grant.



©GAVE THE TAYLORS THE

“We would like to take two to three months and maybe even visit Papua New Guinea, which isn’t far from Australia. We have a 7,000L fuel capacity, which at 8 knots gives us a gazillion nautical miles.”

THESE PAGES

The Horizon Rendezvous gave the Taylors the chance to meet owners from around Australia and share in all the experiences of the boating lifestyle.



“If you saw the Horizon sprint last year, you’d see *Justified* was way out in front of everybody!”

For now, Grant is working on transitioning from semi-retired to actually retired so he and Irene can enjoy more time on their Horizon.

“I’m over in Perth now working,” he says as of press time. “It’s been great to catch up with friends we haven’t seen for a long time. They’re all wining and dining us hoping we’ll take them out on the boat! And we will. We’re planning to schedule different trips for our friends for each of them to spend a week on the boat.”

What’s next? We ask. “The bigger picture is to sell the company and maybe buy a bigger Horizon!” says Grant. Now that is a beautiful life, justified. ➡

VIEW FROM THE HELM

A Captain's Perspective

Taking over a new build two months prior to the 2020 COVID-19 lockdown would test the mettle of any captain. For Captain Brendan Emmons, however, the experience solidified his appreciation for Horizon and the FD Series of yachts.

Boating is in the genes of Jersey Shore native Brendan Emmons, who obtained his captain's license at age 17 while running deliveries for MarineMax. Being a delivery captain was a side job while he built his own real estate/advertising business, but a delivery mate position aboard an 80ft Cheoy Lee transitioned into a full-time captain's role and eventually led him to sell his real estate company and cast off the bow lines. Captain Brendan and his wife Julie currently run Hull One of the tri-deck FD92, Freedom.



THESE PAGES
Captain Brendan and Julie have run three FDs in as many years, and have traveled up and down the East Coast aboard the FD87 *Mobility*, the FD85 *Bella Tu*, and the FD92 *Freedom*.



Q: What was your first experience with Horizon?

A. I had had some experience moving Horizon PowerCats and attended a function aboard the FD87 *Skyline* in Washington DC, but it was in December of 2019 that I was brought in to handle the finishing touches of a new build Horizon – the FD87 *Mobility*. I had been working on the owner's 84ft Hargrave and was tasked with overseeing the delivery, commissioning and closing of the FD87. We were delivered in the midst of the COVID-19 pandemic, and she was unloaded from the ship on the first day of the two-week lockdown.



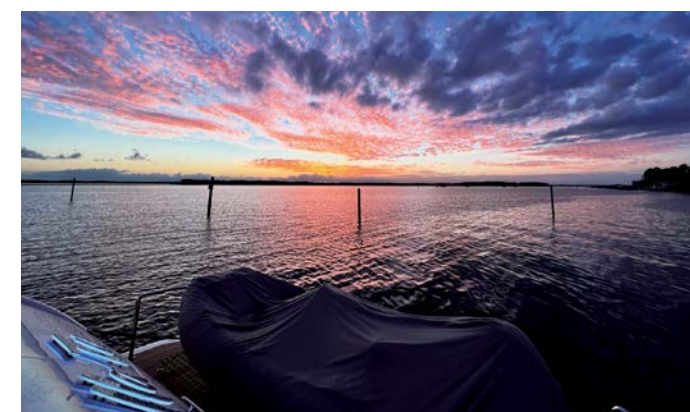
©IMAGES COURTESY OF CAPTAIN BRENDAN EMMONS

Q: Tell us about the FD87's arrival.

A. The original plan was to have a two-week commissioning before setting out to cruise The Bahamas and then the northeast. We had hired two other crew members, but the world went into lockdown and we had to let them go. In the beginning it was just Horizon's service manager, Matt, my wife, Julie and myself. Julie and I were living in a hotel because we hadn't closed on the boat yet and we couldn't do much as we tried to figure out what classified as an essential service. It was quite the experience.

The owner called us one day and said, 'I don't see this pandemic ending anytime soon. If we are on our own boat we are free to travel, so let's head up the coast.'

We agreed to run the boat alone to keep exposure to a minimum. After a couple of shake-down cruises, we embarked on a six-week cruise up the Eastern seaboard of the U.S.



Q: Did the boat ever get fully commissioned?

A. Yes, but not in the usual way. Horizon usually has every vendor come out and get familiar with and check every system of a new build when it arrives. We did as much of that as we could but if we needed a vendor to come out, they weren't able to due to the lockdown.

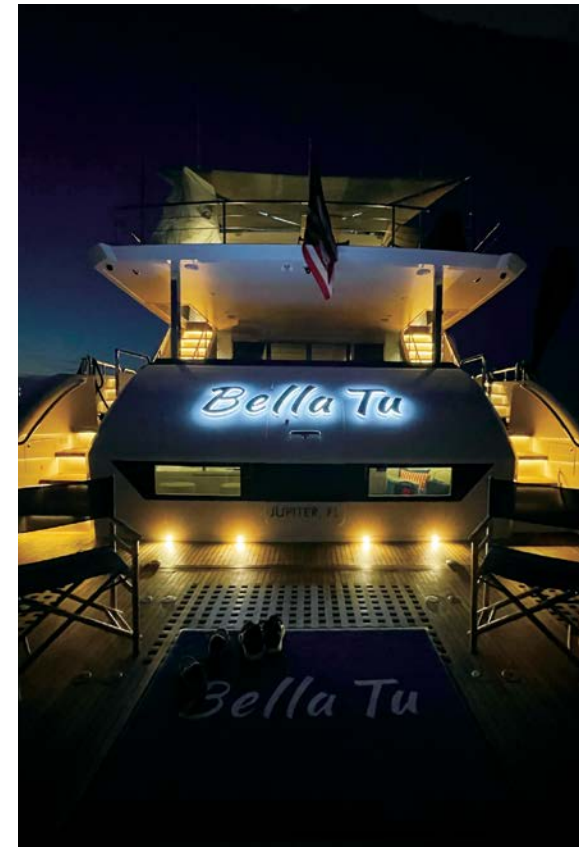
Matt and Roger of Horizon Yacht USA worked tirelessly, meeting us up and down the coast as we traveled. They got MTU to meet us in Georgia on the Sunday of Memorial Day weekend; they sent a guy in a van to us with some Dometic parts we needed. They simply replaced items for us without hassle. Even though the circumstances were beyond their control because of COVID, they went above and beyond. As a result we never got delayed, the owners enjoyed their trip and any issues we encountered were very minimal.





THESE PAGES
Captain Brendan and Julie showcased *Bella Tu* at the Newport Boat Show, then joined the tri-deck *Freedom* after *Bella Tu* was sold.

©IMAGES COURTESY OF CAPTAIN BRENDAN EMMONS



Q: Many builders are following Horizon's lead and offering high-volume designs. Having run high-volume yachts from other builders, what do you see as the main differences?

A. These boats perform very well. While they aren't expected to cross an ocean, they handle just fine in the choppy 6-8ft seas you'd encounter along the East Coast or in the Caribbean. We found ourselves in 10ft+ seas aboard the FD87, not by choice, but the boat handled it fine – nothing was creaking or rattling.

I've been on a competitor's version of the FD and everyone onboard was getting sick in 4-6ft seas. Despite her incredible volume and high freeboard, she takes 4-6ft seas at 10-12 knots and makes it seem like a flat calm day. The bow design makes it a very dry boat as well – I've spent the last three seasons up and down the East Coast with these boats and I can count on one hand how many times I've taken spray over the bow.

Q: You moved from Mobility to the FD87 Bella Tu and then to the tri-deck FD92 Freedom. Tell us about your favorite features of these yachts.

A. With Horizon, owners can make custom changes that might become standard on future models. The owners of *Mobility* pushed the limits of the original FD87 design and replaced the twin cabin on the lower deck with a laundry room, which was a terrific feature. Having the full walkaround on either side of the wheelhouse is huge as it allows for safe, efficient docking.

I also appreciate the A/C in the engine rooms as well as the access to the machinery. I often tell people that although the boats are built in Taiwan, 90% of the parts are built in the U.S. These are basic, easy to understand systems. The important equipment is tried and true and makes for a very stable boat.



Q: What's next?

A. *Freedom* is the owners' first boat ever but they are more educated than most experienced owners, having spent three years researching this purchase. We are setting up an exclusive charter program for the boat in New England and Florida for Horizon yacht owners and families through Yacht Connexion. They know how valuable the crew is so they are building the charter program around crew longevity. Their plan is to then do a new-build Horizon. My first trip to the yard for the 2020 Open House was postponed due to the pandemic, so I am looking forward to visiting the yard for this new build. ➡

OWNER PERSPECTIVE

Horizon Yachts and Owners on the Scene



YACHT NAME: UNTETHERED
MODEL: FD110
OWNERS: American

The exquisite FD110 Untethered, captured at sunset in The Bahamas, with her custom matching tender at her side.
Send your images to marketingcenter@horizonyacht.com ➡

—ON THE— CALENDAR

April

Horizon Power Catamarans Rendezvous
Harbour Island, Bahamas
April 21 to 25, 2022

May

Sanctuary Cove International Boat Show
Sanctuary Cove, Australia
May 19 to 22, 2022

Horizon Yachts USA Rendezvous
Abaco Islands, Bahamas
May 20 to 22, 2022

July - August

Sydney International Boat Show
Sydney, Australia
July 28 to Aug 1, 2022

September

Cannes Yachting Festival
Cannes, France
September 6 to 11, 2022

Monaco Yacht Show
Monaco
September 28 to October 1, 2022

October

Fort Lauderdale International Boat Show
Fort Lauderdale, Florida
October 26 to 30, 2022



November

Horizon Yachts Australia Rendezvous
Hamilton Island, Queensland,
Australia
Contact for details

January

Horizon Yachts Open House
Kaohsiung, Taiwan
January 10 to 12, 2023



2022 Palm Beach International Boat Show

New Inquiries, Repeat Clients and Serious Boaters Dominate the Four-Day Show



Interest in the Horizon Yacht brand remained strong at the 40th annual Palm Beach International Boat Show, which was held March 24-27, 2022. The once modest in-water show highlighted by small boats and marine accessories has expanded over the years to become a serious showcase of large yachts and power boats while maintaining the intimate, luxury feel of its origins. Once again the Horizon Yacht USA team enjoyed a prominent position at the head of Ramp 2, where the voluminous tri-deck FD92 *Freedom* was on full display. At her side, the new FD80 provided an alternate variation of the now six models in the rapidly-expanding FD Series, which has seen 55 yachts sold and in-build since the Series was introduced in late 2016.



THESE PAGES

Horizon Yacht USA showcased a tri-deck FD92 and the spacious FD80 and entertained much interest in the highly anticipated FD110 coming this summer.

Traffic was steady throughout the three-day show, which brought current clients and newly interested parties to the Horizon Yacht stand to discuss the yachts on display as well as new build opportunities and new inventory coming to the U.S., such as the highly-anticipated FD110. "Once again we enjoyed another great Palm Beach show," said Roger Sowerbutts, Horizon's Director of the Americas, "with great feedback from past and current clients as well as exciting new build conversations!"

For more information about the Horizon yachts on display, please contact Horizon Yacht USA at +1 561 721 4850 or email sales@horizonyachtusa.com.

Customized for an owner who desired both an enclosed skylounge and an open flybridge, the FD92 is testament to the extent of customization available to Horizon clients. This yacht features a five-stateroom layout with an on-deck master, crew quarters for four and a beach club. The owners incorporated a his-and-hers ensuite in the forward on-deck master stateroom and added stylistic touches throughout, from a custom backlit headboard and soffit design in the master to carved leather paneling accents and a subtle sunburst theme incorporated within the interior. Exterior areas are plentiful on this tri-deck and each space – from the fordeck to the uppermost deck – has been maximized with storage and lounging options.

Also on display was a Horizon FD80, a cutting-edge design that maximizes superyacht amenities within a smaller footprint. Contemporary style lines, versatility of space, and well planned interior and exterior entertaining areas are the main features of this model. While an Open Bridge is an option for the FD80, the yacht on display showcased a Skyline configuration, with a voluminous interior highlighted by light anegre wood with walnut accents. The main salon features a dayhead and seating area with an off-white leather sofa to port and a convertible dining table to starboard. The galley is situated forward to port and features privacy glass and a bar area and the spacious master stateroom is positioned forward. Two ensuite VIP and a convertible twin stateroom are found on the lower deck, along with crew quarters and a beach club.



Horizon Power Catamarans Announce New PC68 During the Palm Beach International Boat Show

The Horizon Power Catamaran stand was bustling with activity during the Palm Beach International Boat Show, held March 24 - 27, 2022. With three new Horizon Power Catamarans and several brokerage yachts on display, the full range of these spacious, high-performing multi-hulled yachts created a compelling showcase.

A demonstration of the build caliber and efficiency of the PowerCat (PC) range, the new yachts on display included a PC65, PC60 and a PC52. Interior space and build quality are two defining elements of the Horizon PC65, which offers a four ensuite stateroom layout with options for an on-deck master or open salon. The customizable PC60 can accommodate up to four staterooms and offers every amenity necessary for spectacular bluewater cruising. One of the



most popular PowerCat models, the PC52 offers a three-cabin layout that sleeps six, with the entire starboard hull dedicated to the owners.



THESE PAGES
The rise in popularity of power catamarans continues, as evidenced by the well-attended show.



ABOVE
Showcasing the range of the Horizon Power Catamaran Series, on display were a PC65, PC60 and PC52.

Stirring up the excitement during the show was the announcement of the new PC68 model, which features multiple layout options, extended deck space and innovative onboard features. Read more about the new PC68 coming in 2023 on page 16.

The Powercat Company CEO Richard Ford says of the show, "As we see the rise in interest in power catamarans, it was rewarding to hear from the potential buyers at the Palm Beach Boat Show that Horizon Power Catamarans are the Gold Standard in fit and finish. We are truly proud of the attention to detail and customer service that we offer. I am especially excited about the new PC68 with its expansive flybridge and walk-through Portuguese deck. This yacht will be a game changer."

For more information on Horizon Power Catamarans, please contact Richard Ford at +1 954 803 8102 or email richard@powercatco.com.

Upcoming Boat Shows: Horizon Yacht Australia to Showcase Three New FDs at the Sanctuary Cove International Boat Show



VISIT
OUR DISPLAY

LOCATION:
PIER G

Horizon Yacht Australia (HYA) wrapped up 2021 with record sales, selling \$150 million in new models and millions more in Horizon brokerage vessels as owners move up in the brand.

“It has been our biggest year to date with over 14 new vessels sold, three stock boats arriving and 45 brokerage boats sold,” reports Managing Director, Mark Western, adding that an appetite for boats over the pandemic, combined with quality product that has struck a chord with boaties formed the “perfect storm.” With production booked out until early 2023, the HYA team is set to deliver twelve FDs in 2022.

The boost to sales can be largely attributed to the Horizon FD series, which is “exploding” on the Australian market, according to Mark, and the team at Horizon Yacht Australia could not be more excited to dominate the upcoming



THESE PAGES

The Horizon Yacht Australia team saw record sales in 2021, with the FD Series rapidly gaining traction in the market.

Sanctuary Cove International Boat Show, May 19-22, 2022 with world renowned FD Series designs. On display will be a Horizon FD75 Open Bridge, a Horizon FD80 Skyline and a Horizon FD90 Skyline.



Taking its place at the entrance of the series known for its unparalleled volume, innovative functionality and intelligent layout, the FD75 is a remarkable achievement in terms of design and naval architecture. Innovative in both its design and its owner/operator capability, the FD75 features a raised pilothouse design with full teak walk around decks that accommodates both an open bridge and a lower helm area. Showcasing an Open Bridge configuration, the FD75 on display features three staterooms comprised of a full-beam master stateroom forward, a full-beam VIP amidships and a convertible twin cabin to port. A spacious laundry room is situated to starboard and a beach club with a lounge area and dayhead resides aft of the engine room.

The Horizon FD80 Skyline is known for its contemporary style lines, versatility of space, and well planned interior and exterior entertaining areas. The smaller sister to the successful FD90 motoryacht, the Horizon FD80 maximizes interior volume with unique floor-to-ceiling glass sections that invite plenty of natural light and spectacular views into the salon, dining area, and on-deck master stateroom. Below deck, three additional staterooms continue the feeling of spaciousness while a window in the garage extends natural light into the beach club on this level. The FD80 offers functional outdoor spaces that rival those found on 90ft-plus motor yachts. Side wingstations allow for improved visibility while docking and the boat deck aft houses a Jacuzzi tub and a Teppenyaki BBQ for the ultimate in entertainment.

The most popular model in the acclaimed FD Series, the FD90 embodies the space, layout and performance that define the Fast Displacement range. The FD90 on display features a contemporary interior and is the first model to feature the JUNG automation system. Offering crew quarters for four, this four-stateroom yacht features an enclosed skylounge and private wheelhouse configuration, which is accessed via a floating staircase along a painted feature wall. A walkaround design on the bridge deck affords ease of access between the boat deck and forward seating areas, and the fully equipped beach club offers a bar and a lounge settee that converts to a bed.

To schedule your appointment during the Sanctuary Cove Boat Show, May 19th - 22nd, 2022, please contact Horizon Yacht Australia at +61 7 5577 9009 or email sales@horizonyachtaus.com.



WHAT'S ON DISPLAY



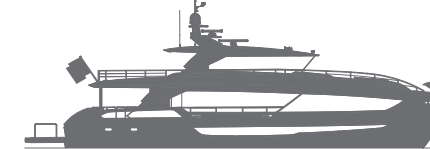
FD75 OPEN BRIDGE

LOA: 77' 8" (23.68M)
BEAM: 20' 4" (6.20M)
GUESTS: 6 IN 3 STATEROOMS
ENGINES: 2 X MAN V8 1,200HP



FD80 SKYLINE

LOA: 80' 7" (24.56M)
BEAM: 22' 6" (6.87M)
GUESTS: 8 IN 4 STATEROOMS
ENGINES: 2 X CAT C32 1,800HP



FD90 SKYLINE

LOA: 89' 2" (27.19M)
BEAM: 23' 3" (7.11M)
GUESTS: 8 IN 4 STATEROOMS
ENGINES: 2 X MAN V12 2,000PS

Destination Spotlight

*The site of the 2022 Horizon Yacht Owners Rendezvous,
the Bahamian island chain of The Abacos offers a charmed island experience
within an atmosphere that is quintessentially Bahamian.*

OUT
OF THIS
WORLD

They're called the "Out Islands" for a reason. The collection of Bahamian islands and cays that stretch from The Abacos to The Inagua Islands, the Out Islands dance to the beat of their own drum. Free from high-rise commercialism and superficial trappings of tourism, the Bahamian Out Islands stand resolutely off the beaten path.

Perched at the northernmost tip of the Out Islands, the 120-mile-long island chain of The Abacos comprises Great Abaco and Little Abaco, with myriad barrier cays offering some of the best cruising and fishing grounds in the world. For true fans of island life, the Abacos provide an unspoiled retreat where pristine beaches, secluded coves and cheerful colors entice the waterborne, artists and recluses alike.

History

Most Abaconians trace their ancestry back to either the early Eleutheran Adventurers who began to settle there in the 1600s, or the British Loyalists - slaves and free Blacks who fled the American Revolutionary War in the 1700s. Reminders of the British Colonial roots of these islands are most evident on the old English loyalist settlements of New Plymouth and Hope Town, which are dotted with pastel-colored colonial homes that remain to this day. The first known settlers of this region were the peaceful Lucayans, who migrated north from Hispaniola and Cuba as early as 700 AD. With a traditional economy backed by fishing and boatbuilding, tourism and citrus farming have been the important industries in recent years.

On September 1, 2019, the islands and communities of the Abacos were devastated by Hurricane Dorian, one of the strongest landfalling Atlantic hurricanes on record. Many lives were lost and the infrastructure suffered tremendously. Recovery was hindered by the COVID-19

pandemic, but the rebuilding progress has been slow and steady, with the communities and many treasured businesses, resorts and watering holes slowly making a return. The wonderful nature of the Abacos and its people has garnered much support from those who love the community and is among the many reasons that Horizon Yacht USA selected this region as the destination of its first post-pandemic rendezvous.

AN ARTISTS' ENCLAVE

Like any idyllic island community, the Abacos islands have enticed artists and other creatives seeking a quiet pace that fosters artistic outlets. Longtime Abaco resident Anthony "Big Mo" Morley is among the many artists that call the Abacos home. He began painting at the age of six and is renown in the region for his versatile, multi-medium works. From crafts to jewelry, to sculptures and paintings, the song of the Abacos is sung by the vibrant community of artists who translate its beauty.

ABACO BEACH RESORT

The iconic Abaco Beach Resort and Boat Harbour Marina have long played an important role for boaters who frequent these beautiful islands. Significantly damaged by Hurricane Dorian, the resort has undergone a dramatic reconstruction and transformation to come back more beautiful than ever. This classic Bahamian getaway is situated on 40 beachfront acres and serves as the home base for the 2022 Rendezvous.



THESE PHOTOS
The village of Hope Town transports its visitors to a world of old Colonial charm.



IMAGES © / ADOBE STOCK

HOPE TOWN, ELBOW CAY

The remote, sleepy outpost of Elbow Cay saw its humble beginnings in fishing and shipwreck salvage and its only settlement of Hope Town has retained this history fiercely. The preservation and education of the community's past is found in the Wyannie Malone Museum - dedicated to



FROM SNORKELING, DIVING AND FISHING TO EXPLORING THE
NUMEROUS CAYS AND PHOTO-WORTHY BEACHES,
THE ABACOS ISLANDS OFFER PURE TROPICAL RELAXATION.



the first settler, a widow who fled the American Revolution with her four children - and the display of the colorful Abaco dinghies still used in regattas throughout the Bahamas. The candy-striped lighthouse on adjacent Elbow Reef remains a steadfast beacon for the Abacos spirit as one of the most recognized landmarks of the region. With picturesque streets and a strong historic vibe, Hope Town offers gift shops, restaurants and pastel-colored

ABOVE
Escape within the unspoiled scenery these islands provide.

homes and businesses that preserve the example of Loyalist architecture. Guests of the Rendezvous will spend a day exploring the town, which offers the relaxed pace of a bygone era, where the acceptable mode of transport is by foot, bicycle or golf cart. The waterfront Cap'n Jacks has reopened and is back to welcoming patrons ready to enjoy some hometown Bahamian fare, refreshing cocktails and island atmosphere!

TAHITI BEACH

Amid the challenges that the last three years have brought to the Abacos, what hasn't changed is the raw beauty of this region. The natural wonders remain, and the unspoiled beauty is even more pronounced than before. At the southern tip of Elbow Cay, the picturesque Tahiti Beach provides the perfect spot for swimming and shelling. Accessible only by foot, bicycle or boat, this secluded white sand beach is lined with coconut trees and provides the ultimate deserted beach experience. It's the perfect atmosphere to sit back and sip on a cocktail from Thirsty Cuda, a fun swim-up bar and restaurant off the edge of the beach.

SUPPORTING THE BAHAMAS

Following the devastation wrought by Hurricane Dorian in the Abacos, Horizon Yachts loaded the Horizon E88 *Wild Duck* with nearly \$10K worth of insulin, ten generators and a salon full of supplies and journeyed from the U.S. office in Fort Lauderdale to Hope Town to make a delivery of these much-needed supplies. There they joined the Horizon E84 *Aqualife*, whose owner brought a doctor and supplies to the island in the immediate aftermath of the hurricane.



FISHING & SNORKELING

Fishing is an integral component of the Abaconian lifestyle, and some of the best marlin fishing in the region is said to be found just off of the Hope Town lighthouse and Elbow Cay. From blue tang to marlin, to dorado, tuna, billfish and more, the waters of the Abacos are an angler's paradise.

Numerous reefs and holes provide myriad snorkeling and diving opportunities in the Abacos, where the world under the surface is just as vibrant and colorful as that at the water's edge.

CULTURE

The tie that binds the natural splendor of the Abacos and these Out Islands with the loyalty of the residents and those who frequent and support the region lies in the Bahamian culture. A mixture of African with British and American influences, the Bahamian culture is colorful, strong and unique, marked by a friendly, easy-going hospitality that welcomes and embraces.

One of the most vocal and colorful celebrations of Bahamian culture is found in the Junkanoo, a traditional parade of music, dance and vibrant costume that celebrates spirituality and freedom. Borne from the method with which slaves expressed jubilation from their lives of captivity, the Junkanoo is a moving embodiment of Bahamian positivity, spirituality and resilience - characteristics that remain at the forefront of these communities today. ➡



IMAGES © / ADDBESTOCK

NO NAME CAY

No visit to the Out Islands is complete without a snout snort and an ear scratch with some of the region's most interesting inhabitants - a community of waterborne pigs who have resided on the northwest shore of Green Turtle Cay for decades. Although the story of how these generations of happy swimming pigs came to live on an uninhabited island has never been verified, their legacy continues to be supported by the snacks and delights provided by countless visitors and locals alike.

THIS PAGE
Fishing and cultural celebrations remain integral components of the Abaconian lifestyle.

Brand New Inventory



Patience is a virtue...
New inventory coming soon!

DELIVERY IN U.S. SUMMER 2022



HORIZON FD110 TRI-DECK MOTORYACHT

- Superyacht styling with tri-deck design
- Crew quarters for six
- High-volume interior
- Enclosed skylounge w/ dayhead
- On-deck master + four ensuite staterooms
- Twin CAT C32A 1,900hp engines

FD SERIES: FD75 // FD80 // FD90 // FD100 // **FD110** // FD125

HORIZON FD80 SKYLINE MOTORYACHT

- Semi-open flybridge w/ seating + bar
- On-deck master + 3 ensuite + crew
- Enclosed pilothouse w/ dayhead
- Convertible table for formal dining
- Beach club with Hi/Lo platform
- Twin CAT C32A 1,800hp engines

FD SERIES: FD75 // **FD80** // FD90 // FD100 // FD110 // FD125

DELIVERY IN AUSTRALIA FALL 2022



DELIVERY IN AUSTRALIA WINTER 2022



HORIZON FD80 SKYLINE MOTORYACHT

- Enclosed skylounge w/ dayhead
- Spacious 23' beam
- On-deck master + 3 ensuite + crew
- Convertible table for formal dining
- Beach club with Hi/Lo platform
- Twin CAT C32A 1,600hp engines

FD SERIES: FD75 // **FD80** // FD90 // FD100 // FD110 // FD125

DELIVERY IN EUROPE SPRING 2023



HORIZON FD80 SKYLINE MOTORYACHT

- Semi-open flybridge w/seating + bar
- On-deck master + 3 ensuite + crew
- Enclosed pilothouse w/ dayhead
- Boat deck w/ Jacuzzi
- Beach club with Hi/Lo platform
- Twin MTU 10V2000 1,600hp engines

FD SERIES: FD75 // **FD80** // FD90 // FD100 // FD110 // FD125

DELIVERY IN U.S. FALL 2023



HORIZON FD90 SKYLINE MOTORYACHT

- Touch-n-go helipad
- 5 staterooms w/ on-deck master
- Semi-open skylounge w/ bar
- Beach club + crew quarters
- BBQ + Jacuzzi on boat deck
- Twin MAN V8 1,300hp engines

FD SERIES: FD75 // FD80 // **FD90** // FD100 // FD110 // FD125

DELIVERY IN U.S. FALL 2022



HORIZON FD80 SKYLINE MOTORYACHT

- Semi-enclosed skylounge w/dayhead
- Spacious beach club
- Four staterooms w/ on-deck master
- Crew quarters for four
- Boat deck w/ Jacuzzi
- Twin MTU 10V2000 1,600hp engines

FD SERIES: FD75 // **FD80** // FD90 // FD100 // FD110 // FD125

DELIVERY IN AUSTRALIA SUMMER 2023



HORIZON FD75 MOTORYACHT

- Raised pilothouse design
- Galley-aft layout
- Open flybridge w/ dayhead
- ABT Zero Speed stabilizers
- On-deck master + three ensuite
- Twin CAT C18A 1,136hp engines

FD SERIES: **FD75** // FD80 // FD90 // FD100 // FD110 // FD1250

USA

+1 561 721 4850
horizonyachtusa.com

EUROPE

+34 971 673 508
horizonyachteurope.com

AUSTRALIA

+61 7 5577 9009
horizonyachtaus.com





Network of Operations



Horizon Shipyard

SINCE 1987
462,540 SQFT

FEATURES

YACHTS UP TO 150FT LOA
INTERIOR DESIGN CENTER



Atech Composites

SINCE 2000
249,070 SQFT

FEATURES

COMPOSITE LAB
TECHNOLOGY SHOWROOM



Vision Shipyard

SINCE 2001
124,530 SQFT

FEATURES

YACHTS UP TO 80FT LOA
INTERIOR DESIGN CENTER



Premier Shipyard

SINCE 2005
258,330 SQFT

FEATURES

DELIVERY CENTER
REFIT SERVICES



Horizon City Marina

SINCE 2014
YACHTS UP TO 200FT

FEATURES

FULL SERVICE MARINA
WATERFRONT DINING

Worldwide Distribution Network



Contact Your Local Representative

Asia

TAIWAN

Horizon Group

No. 8, Kuang Yang St., Hsiao Kang
Kaohsiung, 812010 Taiwan, R.O.C.
Tel: +886 7 860 7770
E-mail: marketingcenter@horizonyacht.com

JAPAN

Creation Co Ltd.

13, Kitahato-Cho
Sakai-City, Osaka, Japan
Tel: +81 722 235884
E-mail: info@creation-marine.co.jp

HONG KONG

Horizon Yachts (HK) Ltd.

AML No.21, Po Chong Wan
Shum Wan Road, Aberdeen, Hong Kong
Tel: +852 2873 2877
E-mail: mariana@horizonyachthk.com

THAILAND / MALAYSIA / SINGAPORE

Derani Yachts Co. Ltd

Phuket Boat Lagoon 20/37 Moo 2,
Thepkasattri Road, Phuket, 83000, Thailand
Tel: +66 (0)81 893 0272
E-mail: hakan@derani-yachts.com

Oceania

AUSTRALIA

Horizon Yacht Australia

44C The Promenade
Sanctuary Cove, QLD 4212
Tel: +61 7 5577 9009
E-mail: sales@horizonyachtaus.com

America

USA – FLORIDA

Horizon Yacht USA

North Palm Beach Office (USA HQ)
1201 U.S. Highway 1, Suite 1
North Palm Beach, FL 33408

Fort Lauderdale Office
Hall of Fame Marina
435 Seabreeze Boulevard
Fort Lauderdale, FL 33316
Main Tel: +1 561 721 4850
Service: +1 561 721 6068
E-mail: sales@horizonyachtusa.com

The Powercat Company (PC Series Only)

2525 Marina Bay Drive West
Fort Lauderdale, FL 33312
Tel: +1 888 839 3071
E-mail: info@horizoncatamarans.com

Europe

SPAIN

Horizon Yacht Europe

Avd. Ingeniero Gabriel Roca, 20
07157 Puerto de Andratx, Mallorca, Spain
Tel: +34 971 673 508
E-mail: sales@horizonyachteurope.com

DEFINE YOUR
EXPERIENCE
PERSONAL AND
VIRTUAL TOURS
AVAILABLE

THE HORIZON FLEET

Our Series Defined



PC
SERIES

Elegant Design, Luxurious Amenities, Ultra Comfortable Cruising



FD
SERIES

Innovation, Efficiency, Style, and Space



FD100 SKYLINE

FD100 TRI-DECK



FD110 SKYLINE

FD110 TRI-DECK

FD125



V
SERIES

Timeless, Versatile, Customizable



RP
SERIES

Multi-Functional Exterior Areas and Superyacht Space



P
SERIES

Superyacht Styling, Fully Customized Build



E
SERIES

Seaworthy, Sporty, Something for Everyone



EP
SERIES

Designed to Inspire, Built to Explore

Coming Soon

FD90

Go-Anywhere Style

The optimal yacht with a casual yet chic go-anywhere style, the FD90 features four staterooms, a rooftop helipad, an enclosed skylounge, a heated Jacuzzi and a flybridge bar. ➡

GOLD ANCHOR MARINA

WORLD CLASS AMENITIES

WATERFRONT DINING

EXPERIENCE CITY LIFE

HORIZON CITY MARINA

 **HORIZON**
HORIZON CITY MARINA

A GOLD ANCHOR MARINA, A GATEWAY TO LUXURY.
The world class Horizon City Marina accommodates yachts up to 200 feet (60m) in 12 berths and alongside 1,100 feet of environmentally-friendly floating docks. Enjoy complete yachting services and amenities in Asia's up and coming leisure destination.

+886 963 713 993 hcm.horizonyacht.com



FREEDOM LIES IN BEING BOLD



Introduced to the world market in 2016, the Horizon Fast Displacement (FD) Series has taken the yachting industry by storm, noted for its striking style, appreciated for its well-planned layout, and praised for its exceptional stability and performance. Much of the success of this series, designed in collaboration with Cor D. Rover, can be attributed to our clients, who provide the inspiration for enhanced functionality and ingenious design ideas. The pioneering high-volume series offers both megayacht living and proven performance.



USA
+1 561 721 4850
horizonyachtusa.com

EUROPE
+34 971 673 508
horizonyachteurope.com

AUSTRALIA
+61 7 5577 9009
horizonyachtaus.com