

# HORIZON

FOR THE YACHT OWNER WHO DEFINES DREAMS

## *MARINA MILESTONE*

*Horizon City Marina Receives Accreditation*

*5 New FD Launches*

## **FD90:SUMO**

Largely Made for Entertaining



*Horizon Owners Gather Down  
Under for a Day in Chance Bay*



SPOTTED

# THREE DIMENSIONAL

*Two Horizon FD90 motor yachts and a tri-deck FD102 are  
captured during sea trials off the coast of Taiwan.  
These three yachts will soon be delivered to Australia.*





## CEO MESSAGE

# FORWARD THINKING

### Two years ago, my CEO Message for Vol. 52

stated that 2020 would mark the beginning of a new era for Horizon Yachts. What I could not have foreseen at the time was that 2020 would indeed be a new era for Horizon Yachts - one that would invite innovation and exciting new means of doing business in more ways than I had imagined.

The COVID-19 pandemic caused the world to hit the pause button and some industries – the service sector, for example – have been severely impacted, while others, such as the electronics industry, remain strong. Often a microcosm unto itself, the yachting industry experienced supply chain challenges that impacted production schedules, but aside from this, the global market for both new build and pre-owned yachts is booming and looks to remain that way for some time.

With the pandemic limiting international travel and large gatherings, we replaced our annual global events with smaller, local rendezvous, showcases and luncheons and hosted an intimate open house for the Horizon family. Communications technology has allowed us to continue doing business in real time via online meetings and enables our clients to keep track of the production status of their yacht.

As a semi-custom yacht builder, we wondered if we could still fulfill our clients' requirements without the traditional face-to-face meetings and discussions, but the experience of the past two years has proven that remote



communication doesn't negatively impact the process. In fact, the pandemic has helped us to implement the remote-working process successfully.

The ways people buy, sell, build and use their yachts has remained relatively unchanged for a long time. But there is no question that the future is going to change much faster, and the yacht owner of the new generation will live a very different lifestyle. All one has to do is pay attention to the rise in popularity of new ways of trading and entertainment such as cryptocurrencies, VR, metaverse and NFT to name but a few. Will the next generation view yacht ownership or the yachting lifestyle the same way we do today? It is this new evolution that will affect the yachting industry in the future and the time to plan for the new paradigm is now.

John Lu  
Horizon Group CEO

## HORIZON

Founded in 1987, Horizon Yachts has celebrated 35 years as one of the largest luxury yacht builders in the world as well as the number one builder in the Asia Pacific region. During these three decades, Horizon has delivered over 870 luxury yachts, with more than 230 of these over 80 feet in length. Popular models ranging from 52 to 150 feet include motor yachts, superyachts, power catamarans, expedition yachts, and fast displacement motor yachts.

PUBLISHER  
John Lu

MARKETING DIRECTOR, HQ  
Joey Lu

MARKETING DIRECTOR, U.S.  
Elise Moffitt Caulder

EDITORIAL COORDINATORS  
Andrew Hsu, Lily Li, Lisa Yang

### SUPERYACHT CREATIVE

EDITORIAL DIRECTOR  
Rebecca Cahilly-Taranto

CREATIVE DIRECTOR  
Richard Taranto

All particulars in this magazine are believed to be correct but cannot be guaranteed. No part of this publication may be reproduced or duplicated without written permission from Horizon Yachts.  
©Horizon Yachts 2022. Advertising opportunities: marketingcenter@horizonyacht.com. Letters to the editor: marketingcenter@horizonyacht.com.

## Innovation On Every Level



## THE NEW FD100 TRI-DECK

### MULTIFUNCTIONAL DESIGN. ON-DECK MASTER. BEACH CLUB.

Head-turning style, impressive interior volume, and a new tri-deck configuration define the FD100 Tri-Deck, a five-stateroom yacht that pairs luxurious interior accommodations with inviting exterior spaces across all levels. From the lightweight open flybridge, with a lounge area and helm atop the enclosed skylounge, to the fully equipped beach club, the new FD100 offers the ultimate superyacht experience.

FD: THE WORLD'S FASTEST GROWING YACHT SERIES

USA  
+1 561 721 4850  
horizonyachtusa.com

EUROPE  
+34 971 673 508  
horizonyachteurope.com

AUSTRALIA  
+61 7 5577 9009  
horizonyachtaus.com

  
**HORIZON**  
WORLD CLASS YACHTS



# // CONTENTS

**2** CEO Message

## NEW WAVE

**14** Horizon City Marina Receives Certified Marina Operator License

**16** Horizon FD92 Wins Taiwan Excellence Silver Award

**18** Keep up With the World's Fastest Growing Yacht Series

**20** Horizon Strengthens Its Commitment To Ocean Conservation

**22** Feature Yacht: What's *NeX-T*

*Inspired to customize his next yacht to suit his preferences, this experienced American owner turned to Horizon to build a tri-deck FD92.*

## FIVE FD LAUNCHES

*Demand for the FD Series is strong on both the Australian and North American continents, with five recent new build launches bound for owners in both markets.*



**38** Feature Yacht: The Friend Ship

*Built for experienced "boaties", the new FD90 SUMO is outfitted for fun and entertainment.*

## HORIZON LIFE

**48** Horizon Yachts Australia 2021 Owners' Rendezvous

*Ten stunning Horizon yachts and their owners cruise to a beach luncheon in the Whitsunday Islands.*

**58** Horizon Yacht USA Sells Five Yachts Following the

2021 Fort Lauderdale International Boat Show

**60** Horizon Power Catamarans Sells 50<sup>th</sup> Hull

*The deal for a new build PC60 was signed during the Fort Lauderdale International Boat Show.*

**62** Owner Experience:

*The sun was shining in Fort Lauderdale as the new Horizon E81 Valiant was delivered to her owners.*

**65** Calendar of Horizon Global Events

**72** Coming Soon: The Brand New Horizon FD80 Skyline



**ON THE COVER**  
Ten Horizon yachts and their owners and guests gathered to enjoy a picture-perfect day in the Whitsundays.

**30**

## FEATURE YACHT:

AN EXQUISITELY DESIGNED FD90

*This new launch features high-end finishes and custom touches throughout.*





PAID ADVERTISEMENT



**ARITEX**  
*Essence of Luxury*

**Customized Stainless Steel Solutions**  
[www.aritex.com.tw](http://www.aritex.com.tw)

# NEW WAVE

ALL OF THE LATEST NEWS FROM THE YARDS



NEW LAUNCHES // TECHNOLOGY AND INNOVATION // FUTURE DESIGN CONCEPTS →

DEFINE YOUR HORIZON



# New Launches

*Demand for the FD Series is strong on both the Australian and North American continents, with five recent new build launches bound for owners in both markets.*

**SOLD TO AN AMERICAN OWNER**

## FD92 Tri-Deck Hull Four



Quickly becoming one of the FD Series' more popular designs, a fourth tri-deck FD92 has launched and will soon deliver to her American owner.

Christened *NeX-T*, this latest FD92 was commissioned for an experienced owner who has built and owned a variety of yachts. He was drawn to the FD92's tri-deck configuration and beach club design and appreciated the yard's willingness to customize to his vision. That vision is executed throughout the five-stateroom yacht, which demonstrates a sophisticated feel with a Mid-Century Modern touch.

A hallmark of the FD Series design, the master suite is situated forward on the main deck. This comfortable area features plentiful closet space as well as a modern headliner treatment over the king-sized bed that faces the his-and-hers ensuite. Four additional ensuites staterooms comprised of two mirrored VIPs amidships, a convertible twin to port and a VIP in the bow are situated on the lower deck. Crew quarters for five are positioned aft of the engine room, with access to the spacious beach club



fitted with a convertible settee/sunpad that accesses the water via the Hi/Lo swim platform.

The FD92's tri-deck design allows for multiple exterior spaces for entertaining and relaxing. On the bridge deck, the enclosed wheelhouse and skylounge opens aft onto the boat deck that features a bar with three fixed stools and Jacuzzi with its own counter area and barstools. The foredeck is outfitted with additional seating and lounging while the lightweight flybridge features a helm and comfortable L-shaped seating area.

Upon taking delivery of his newest yacht in Fort Lauderdale, the owner plans to cruise The Bahamas with family and friends. Read the full feature on *NeX-T* on page 22.

This four-stateroom FD90 Skyline yacht was sold to an Australian owner soon after her launch.

Designed throughout to take advantage of the wide beam and high-volume interior that defines the Cor D. Rover-designed Fast Displacement (FD) Series, this FD90 offers an on-deck master stateroom, a convertible VIP on the lower deck, and a fully-equipped beach club.

Satin walnut, black glass and black lacquer finishes highlight the loft-like main salon, whose volume is amplified by floor-to-ceiling windows and comfortable, custom low-profile furniture including a large sofa with built-in storage. A custom bronze lighting feature highlights



the dining area, and is controlled by the yacht's JUNG automation system, which allows the owner to control lighting, window treatments, audio and A/C via phone or iPad devices.

The full-beam master stateroom is situated furthest forward on the main deck, and offers plentiful wardrobe space as well as a built-in leather loveseat under the window to starboard. The spacious en suite features a full-length smart glass wall for privacy when desired.

Three further staterooms comprised of mirrored queen-size ensuites amidships and a convertible twin/VIP in the bow reside on the lower deck. A spacious laundry room with storage complements the staterooms, and crew quarters for four are found aft of the engine room.

This FD90 has been designed with an enclosed skylounge and private wheelhouse configuration. The boat deck offers a bar and an expansive exterior lounge area with freestanding furniture that is easily shaded with a sun awning. Walkaround side decks access the additional entertaining and lounging space on the foredeck, which can also be shaded by a sun awning.

Read the full feature on this new FD90 on page 30.

**SOLD TO AN AUSTRALIAN OWNER**

## FD90 Skyline Hull 22





This project began as an FD92 but was extended to accommodate the owners' requests for plentiful exterior areas. She features three spacious decks including an open flybridge and a semi-enclosed skylounge and offers a five-stateroom layout with an on-deck master suite.

While the yacht features a mostly traditional layout on the main deck, with an expansive aft deck, a salon highlighted by full-height windows, and a formal dining area and galley forward, it is anything traditional in its styling. PLK design styled the interior, with company owner Pete personally selecting the finishes and outfitting accessories. Australian furniture maker Jordan supplied much of the interior furniture, from the dining table and chairs to the tub chairs in the salon, and the owner selected beautiful Cambria stonework as an upgrade throughout. The use of Australian brands continues in the lighting, with Soktas Hand Blown Glass Lighting providing the main ceiling feature light in the salon as well as the wall lamps in the full-beam master stateroom on the main deck forward.



Guest accommodations extend from the on-deck master to four further staterooms on the lower deck comprising mirrored VIPs amidships and a double and convertible twin forward. Crew quarters and the beach club are situated aft of the engine room.

The deck areas on this tri-deck FD102 do not disappoint, with the semi-enclosed skylounge hosting a bar and seating area and extending aft to a full dining area with a jacuzzi tub aft. The 15ft Castoldi Jet tender will be stowed on the foredeck, while the open flybridge offers plentiful seating and sunbathing opportunities.

Christened *Askari*, this latest FD102 will be based in Airlie Beach with plans to cruise the Islands of the Kimberley in Western Australia.

SOLD TO AUSTRALIAN OWNERS

## FD102 Tri-Deck Hull 23



Commissioned by experienced boaters and planned for entertainment, the FD90 Hull 24 features an enclosed skylounge configuration and a five-stateroom layout including an on-deck master. A large aft deck leads into the spacious main salon, which offers a comfortable seating area with a dayhead aft. Positioned forward of the galley on the main deck, the full-beam on-deck master stateroom offers built-in lounge seating, plentiful closet space and an ensuite with dual sinks.

Outfitted in satin walnut with black accents and Cambria stone highlights throughout, the interior exudes a sophisticated feel. The look continues on the lower deck, where four mirrored ensuite VIP staterooms accommodate guests in spacious comfort. A crew of four is accommodated aft of the engine room.

SOLD TO AUSTRALIAN OWNERS

## FD90 Skyline Hull 24

The active owners prioritized entertaining and lounging throughout the deck spaces, from the adjustable sunpad and ample seating area specified for the foredeck to the beach club with its large bar serving guests on the swim platform. The semi-enclosed boat deck is highlighted by a heated Jacuzzi, a convertible seating and dining area, and a large bar finished in a mother-of-pearl mosaic.

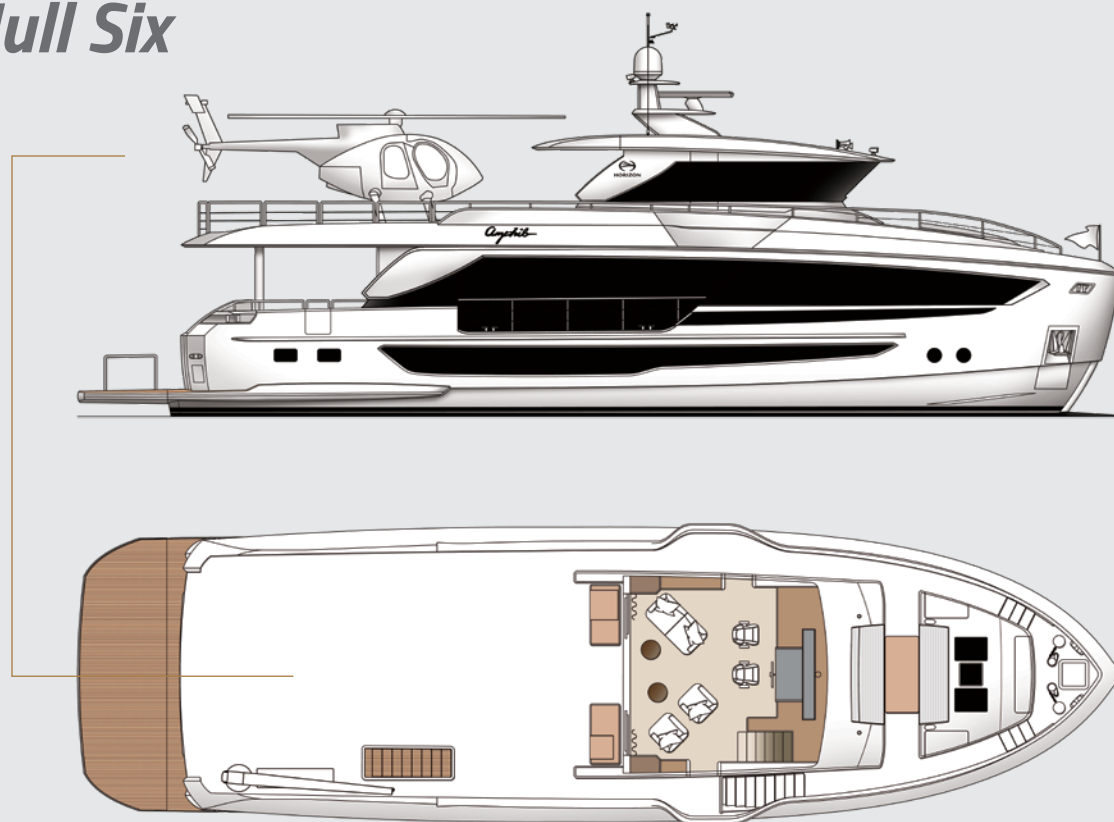
For more details and photos of this yacht, christened *SUMO*, see the full feature on page 38.





SOLD TO AN AMERICAN OWNER

## FD80 Hull Six



*This is the first FD80 to feature a helipad and includes a folding overhang for rotorblade clearance.*

Customization is a cornerstone of the Horizon Yachts philosophy, and the company proudly employs a talented engineering team to consider advanced customization requests – many of which are first-time features aboard current models. Recently launched, the FD80 hull six offers a touch-and-go helipad on the boat deck, which is the first time this feature has been engineered for this model.

The design of the FD80 appealed to the first-time Horizon owner for its four-stateroom layout, on-deck master suite, aft beach club and enclosed skylounge. A generous aft deck fitted with a built-in settee and a freestanding dining table for eight segues through fully opening glass doors into the open-plan main salon, which is fitted with matte oak and walnut as the main woods and features a dayhead aft to port and a convivial off-white leather L-shaped sofa and seating area. Opposite, a convertible table serves multiple roles as a work table, breakfast bar or interior dining table. The galley forward features a privacy window that can be opened or closed, with a counter overhang and bar stools for

conversing with the chef. The master ensuite is situated forward and has been designed with a spacious closet and overhead skylights.

Three additional ensuite staterooms comprising two VIPs in the bow and to port and a convertible twin to starboard are situated on the lower deck, while spacious crew quarters for four aft of the engine room. A fully equipped beach club invites interaction with the sea from the Hi/Lo swim platform that can accommodate the yacht's tender.

On the upper deck, the owners opted for an enclosed skylounge configuration aft of the helm station, with the entire aft portion of the boat deck dedicated to the yacht's helipad. This feature has been incorporated for an owner of an FD85, but is the first to be designed aboard an FD80 model. An additional seating and dining area with a Hi/Lo table is designed for the foredeck.

This new FD80 is scheduled to be delivered to her owner in the Spring of 2022, after which he plans to cruise The Bahamas and both coasts of the United States. ➡

## The Game Changer Has Arrived



## THE FD75

**FOUR STATEROOMS. ON-DECK MASTER. BEACH CLUB. OWNER OPERATION.**

Now you can have it all. Taking its place at the entrance of a series known for unparalleled volume, innovative functionality and engineered performance, the FD75 offers limitless customization for owners ready to change the game.

**FD: THE WORLD'S FASTEST GROWING YACHT SERIES**

### USA

+1 561 721 4850  
horizonyachtusa.com

### EUROPE

+34 971 673 508  
horizonyachteurope.com

### AUSTRALIA

+61 7 5577 9009  
horizonyachtaus.com

  
**HORIZON**  
WORLD CLASS YACHTS



# Horizon City Marina Receives Taiwan's First Certified Marina Operator License

*Marina Manager Eve Kung becomes world's first Chinese woman to acquire the accreditation.*

## **Horizon Group's private international marina adds the Certified Marina**

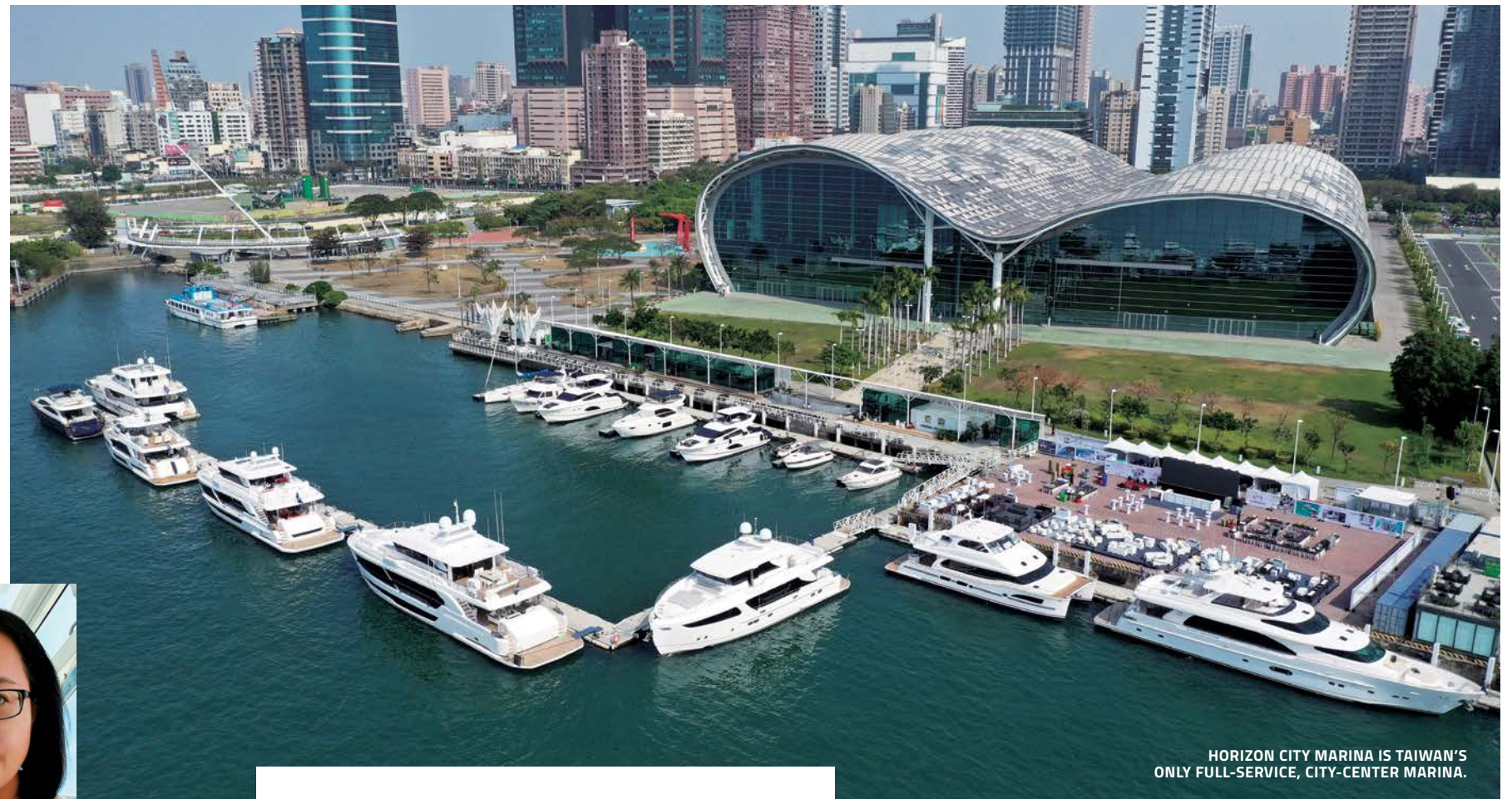
Operator (CMO) license to its growing list of achievements and accreditations. Issued by the Marina Industries Association (MIA) serving Australia and the entire Asia Pacific region, the CMO certification is the latest milestone for the growing marina, which also received Taiwan's first Gold Anchor Global Marina Accreditation in 2016.

Founded in 2013, the Horizon City Marina is located in the port of Kaohsiung on the southwest coast of Taiwan. Accommodating vessels up to 200 feet in length, the 11,000sqft marina is conveniently situated in the heart of the city's developing "Asia New Bay Area" and is Taiwan's only professional city-center marina, providing water and shorepower services as well as maintenance, provisioning and restaurant options.

Established by the British Marine Federation and the MIA, the CMO license is granted to marina operators with at least 50 slips, a minimum AUD\$500,000 in gross annual revenues, and at least six marina employees. Applicants must also demonstrate sound strategy, finance, regulation, operation, hardware, supply chain and human resource experience and capabilities.

In another exciting first, Horizon City Marina Manager Eve Kung received the official disclosure from MIA president Andrew Chapman that she is now the 58<sup>th</sup> certified marina operator in the world, as well as the first Chinese woman to be awarded the certification. Eve has seven years of marina operations experience and has successfully completed Intermediate Marina Management and Advanced Marina Management courses alongside classmates hailing from Singapore, Thailand, Malaysia, Mainland China, Hong Kong, Qatar and other Asia Pacific regions.

Continuous innovation and development is a core focus for the Horizon Group. Not only has the company established international standards in marina hardware and software capabilities, Horizon applied environmentally-friendly and innovative construction methods to the build of pillar-less floating docks in Kaohsiung's commercial port eight years ago. The Horizon City Marina is an accredited, vertically-integrated, internationally-focused brand aimed at propelling Taiwan's marina industry to the next level.



HORIZON CITY MARINA IS TAIWAN'S ONLY FULL-SERVICE, CITY-CENTER MARINA.



**ABOVE**  
Marina Manager *Eve Kung* becomes the world's 58<sup>th</sup> as well as the first Chinese woman to be awarded the CMO certification.



**ABOVE**  
Horizon City Marina received Taiwan's first Gold Anchor Global Marina Accreditation in 2016.



**ABOVE**  
Taiwan President Tsai Ing-wen greets state visitors at the Horizon City Marina.

Since its establishment in 2013, the Horizon City Marina has accommodated yachts and guests from around the world, from several large fleets to a 184ft luxury motor yacht and a 1974 classic wooden sailing boat. The full-service marina is readily equipped to serve boats and yachts from around the world and hosts the Taiwan International Boat Show, as well as launching events and delivery ceremonies for various yacht brands. It also serves as the backdrop for sister cities' signing ceremonies and a landmark for greeting state and foreign visitors. The CMO certification will serve to further enhance Taiwan's reputation globally and will attract more yachts and their owners to the vibrant city of Kaohsiung.

"The development of Taiwan's yachting facilities and services may have had a late start," says Horizon City Marina Manager Eve Kung, "but we have gained invaluable knowledge and experience through international seminars and communication with marina managers from other countries. Receiving the CMO certification allows us to pursue and continue the multi-faceted development of the yachting industry and lifestyle in Taiwan."

For more information on the Horizon City Marina or to make a berth reservation, please contact [YachtONE@horizonyacht.com](mailto:YachtONE@horizonyacht.com).



Scan for more information on the Horizon City Marina.



# 2022 Taiwan Excellence Awards

*Horizon FD92 Wins Taiwan Excellence Silver Award*



**THIS PAGE**  
Horizon Marketing Coordinator Lily Li (right) accepted the 2022 Taiwan Excellence Silver Award on behalf of Horizon.



## **Horizon Yachts has once again received a Taiwan Excellence**

Award. Presented at the 2022 Taiwan Excellence Awards ceremony on November 24<sup>th</sup>, the Horizon FD92 model — the first ever tri-deck design in the highly acclaimed FD Series — was recognized with a Taiwan Excellence Silver Award. The FD92 is the thirteenth Horizon yacht model to be honored with a Taiwan Excellence Award.

Established by Taiwan's Ministry of Economic Affairs in 1993, the Taiwan Excellence Awards recognize innovation and excellence across a variety of industries. Held annually, the awards are presented to nominees who surpass a rigorous selection process that analyzes four major areas including R&D, Design, Quality and Marketing. The qualifying product must also offer Innovative Value while satisfying the key criterion of being Made in Taiwan.

The FD92 design was born out of an experienced owner's request for a configuration change to the FD87 layout that would incorporate both a protected interior helm station and the option for al fresco navigation. Horizon's engineers answered the request by designing a hullform that accommodated a lightweight carbon fiber flybridge without compromising performance.

The tri-deck design allows for a helm, L-shaped seating, a sunpad and small bar equipped with a fridge and icemaker to be positioned on the uppermost deck, which can be shaded with a bimini top. Another inviting exterior area has been designed for the foredeck, which features a six-person Jacuzzi, seating area, sunpads and fridge/icemaker. Aft of the enclosed skylounge — which houses the helm station, lounge seating and a dayhead — the boat deck is fitted with a bar and stools while the tender is comfortably stowed furthest aft while underway. Intended for entertaining, the aft deck of the new FD92 has been designed to accommodate formal dining for ten and features a wet bar on the starboard side as well as a built-in settee and plenty of storage. Graced by the full-height windows throughout the main salon, another formal dining table for ten separates the interior lounging area and aft dayhead from the portside galley and full-beam master forward.

The FD92 accommodates guests in a full-beam on-deck master stateroom equipped with his-and-hers heads and four additional lower-deck staterooms. Crew quarters for three are situated aft of the engine room, just forward of the fully equipped beach club.

Instantly popular with Horizon owners, three further tri-deck FD92 yachts were commissioned and built following the introduction of the first FD92. The company now offers tri-deck versions of its FD100 and FD110 models as standard. ➡



**TAIWAN EXCELLENCE  
SILVER AWARD 2022**



**TAIWAN  
EXCELLENCE 2022**



# HUNG SHEN PROPELLER

FPP • CPP & Shafting

宏昇螺旋槳



Newly Developed

End Plate Propeller (ENDP) 端板螺槳

Low Noise Low Vibration

Give you a more  
Comfortable yacht life



New Design Silent Submarine  
ENDP Propeller

**Hung Shen Propeller Co., LTD (Headquarter)**

Tel: +886-8-869-0111 Fax: +886-8-869-0333  
info@hungshenprop.com www.hungshenprop.com

**HS Marine Propulsion LLC (U.S.A. Branch)**

Tel +1 (228) 875-6111 Fax +1 (228) 875-6612  
Vice President: James Travis Marketing Manager: Jake Travis  
jtravis@hsmarineprops.com jake@hsmarineprops.com  
www.hsmarineprops.com

Patent  
Taiwan Pat. No. I515147  
U.S.A. Pat. No. US10,155,575B2  
Europe Pat. No. EP3508415A1  
Japan Patent Pending



# Keep up With the World's Fastest Growing Yacht Series



available in print or online at  
[www.horizonyacht.com](http://www.horizonyacht.com)

*Horizon's Fast Displacement Series of yachts continues its trailblazing success, with over thirty-five FD Series yachts sold to clients hailing from the U.S., Australia, Europe and Asia.*

**Now available online, the latest FD Series Order Book** details each build and upcoming launch of Horizon's acclaimed high-volume yacht series that is pioneering the designs of new yachts worldwide. First introduced in 2016, the Cor D. Rover-designed series has expanded into 6 models ranging from 75 to 125 feet, with over 35 hulls being

sold to clients on four continents. Enjoy the story of each build and be inspired by the owner customizations, feedback and more in Volume 9 of the FD Series Order Book.

To receive a printed copy of the latest FD Series Order Book, please contact: [marketingcenter@horizonyacht.com](mailto:marketingcenter@horizonyacht.com) or reach out to your local Horizon representative. ➡



Scan to explore the latest FD Series Order Book.



HORIZON FD110 SKYLINE

PAID ADVERTISEMENT

**GARMIN.**

## 360 SURROUND VIEW CAMERA SYSTEM

Get a bird's-eye view without leaving the helm



台灣總代理 - 海科實業 MARINEER CO., LTD.

TEL: +886 7 8061575

Mail: [inquiry@marineer.com](mailto:inquiry@marineer.com)

Authorized distributor for :

**EmpirBus™**  
A Garmin Brand

**FUSION™**  
A Garmin Brand

**GARMIN.**

**HUMPHREE®**  
Trim and stabilization systems

**ECHOPILOT™**

**KVH™**



Global Initiatives

©WATER REVOLUTION FOUNDATION

# HORIZON YACHTS

## STRENGTHENS ITS COMMITMENT TO OCEAN CONSERVATION



*Horizon Group  
among leading yacht  
builders launching a  
GT-based reinvestment  
initiative with Water  
Revolution Foundation.*



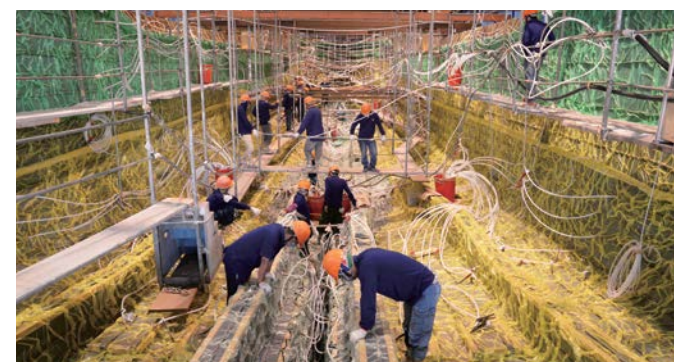
**LEFT**  
Headquartered in Taiwan, Horizon builds award-winning yachts from 52 to 150 feet in length.

***Horizon Yachts is among the first of the world's leading yacht***

builders to demonstrate a commitment to ocean conservation with The Water Revolution Foundation. Joined by other prominent shipyards including Lurssen, Oceanco, Heesen Yachts, Feadship, and Royal Huisman, Horizon Yachts has committed to the establishment of a structural approach for reinvestment into ocean conservation that is based upon the Gross Tonnage (GT) of yachts they deliver. Each yard has committed to contributing €1 per gross ton delivered per year. The builders that have signed on thus far have delivered nearly 60,000 GT in 2021.

The Water Revolution Foundation was formed from within the yachting industry as a means to enact tangible steps to preserve the world's oceans while reducing yachting's footprint and environmental impact. Funds collected by The Water Revolution Foundation are donated in their entirety to Important Mammal Marine Areas (IMMAs), a program of the International Union for Conservation of Nature Task Force on Marine Mammal Protected Areas. This program seeks to identify areas that are important to marine mammals and prioritize their protection through governmental, intergovernmental and conservation group measures.

With 159 IMMAs already established across the Southern Hemisphere, the scientists behind the IMMA program are now looking to the Northern Hemisphere. In total, there are nine regions of the ocean still to be mapped. The North Atlantic is next, which is the common crossing route for yachts and superyachts between the Mediterranean and Caribbean seasons. The funds collected in 2022 will go toward the €550,000 target goal needed to start the two-year North Atlantic IMMA project.



This initiative coincides with the United Nations' 2021 declaration of the "Ocean Decade," a ten-year global emphasis on catalyzing transformative ocean science solutions for sustainable development.

The Water Revolution Foundation is the latest in Horizon Yacht's attention to quality manufacturing standards and environmental conservation that began with the ISO 9002 certification of each of the company's five manufacturing facilities and includes the continuous innovations by Atech, the Group's advanced composites manufacturing division. From its foray into environmentally sustainable yacht design and construction to its low-VOC, patented SCRIMP and now resin vacuum 6D Infusion® technology, Horizon continues to be a pioneer in environmentally sound and efficient design and construction methods producing innovative, lightweight and durable hulls that improve performance while lowering fuel consumption.

"As manufacturers, we have a responsibility to produce with our clients, our employees and our environment in mind," says Horizon Yachts Founder and CEO John Lu. "Since 1987 we have been committed to implementing innovations and technologies that enhance the yachts we build and advance the yacht building industry in general, while remaining true to our mission to produce responsibly. To join with a significant number of yacht builders in this initiative with The Water Revolution Foundation is testament that the global yachting industry shares in this mission." ➡



**LEFT**  
Horizon Yachts is the leader in advanced composites yachtbuilding and was the first yacht builder to implement vacuum infusion for large hulls.

Learn more about The Water Revolution Foundation and its yacht-based initiatives.



# WHAT'S NeX-T



*Inspired to customize his next yacht  
to suit his preferences, this experienced  
American owner turned to Horizon to build a tri-deck FD92.*



**THESE PAGES**  
The tri-deck configuration generously expands the deck offerings and allows for multiple seating areas as well as a large Jacuzzi on the boat deck.



*The open flybridge invites lounging and relaxation.*



**Horizon's Fast Displacement (FD) Series has evolved** exponentially since it was first unveiled to the market, with client customization requests inspiring the introduction of a spectrum of new models and configurations. As the first tri-deck offering of the Cor D. Rover-designed Series, the FD92 model is one such example, and has quickly become one of the Series' more popular designs, with other tri-deck options now entering the range.





It's only logical that the option for both an interior skylounge and a lightweight open flybridge coupled with a voluminous interior and stable hull platform would appeal to experienced owners, so when Ocean Independence broker Chris Collins introduced his client to the Horizon FD Series, it was the tri-deck design, beach club and opportunity for customization that sealed the proverbial deal.

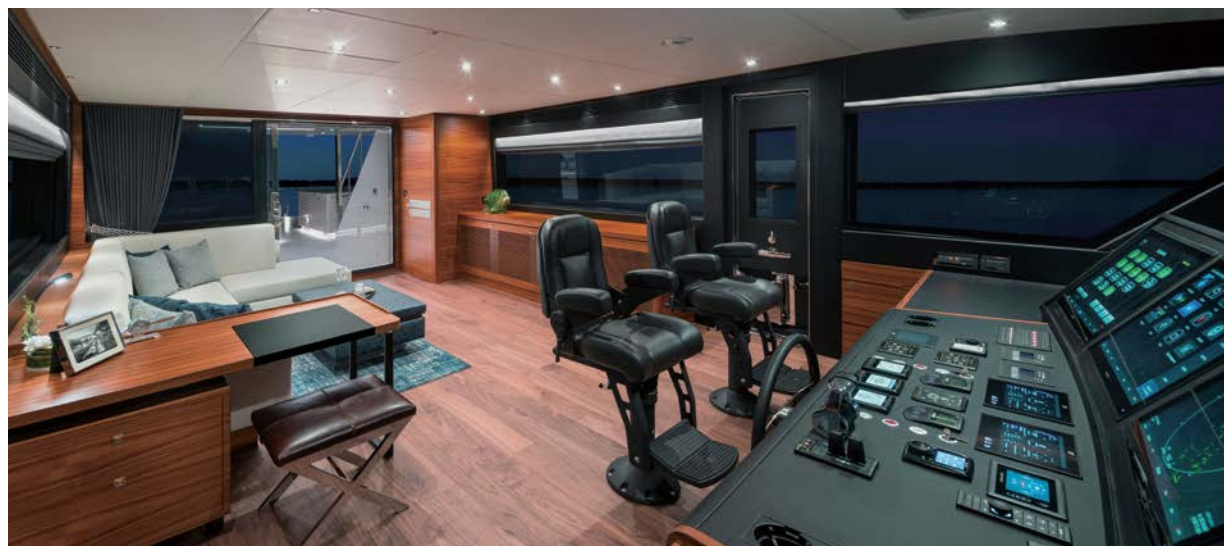
Counting among his current boats a Van der Valk Beachclub 600 as well as a classic 1988 78' Burger, and having previously owned a 2017 Ocean Alexander 70e and a 2018 Ocean Alexander 85e, the owner is no stranger to a variety of yacht builds and was thus eager to impart his vision and custom touches into his new yacht, which will be christened *NeX-T*.

That vision is executed throughout the five-stateroom yacht, which demonstrates a sophisticated feel with a Mid-Century Modern touch. The main deck is configured in the traditional layout, with a large aft deck highlighted by a cozy conversation area and Hi/Lo foldable coffee table leading through fully opening doors into the spacious main salon. In the open salon, a dayhead is situated aft to



**THESE PAGES**  
A casual, Mid-Century Modern style extends from the large aft deck through the main salon and galley area.

*Learn More About the  
FD92 Tri-Deck NeX-T.*



**RIGHT**  
The enclosed skylounge comprises the wheelhouse and a spacious lounge area.



**THIS PAGE**  
Situating forward of the main dining and galley area, the master features a large his-and-hers en suite.



starboard, faced by a sumptuous leather L-shaped sofa and large coffee table with ottoman storage. The owner worked with Horizon's in-house design team to bring his style to the interior, which features dark walnut flooring with teak wood in a satin finish as the main woods. This elegant combination complements the subtle Mid-Century Modern style found in the furniture and finishes.

Forward of the main salon area, a large dining area featuring a convertible dining table is easily accessed by the Cambria-highlighted galley, which can be open or closed off from the salon via a door and a privacy screen. Floor-to-ceiling windows invite plenty of light into the salon, and sliding doors to either side allow for semi-al fresco dining in this space.

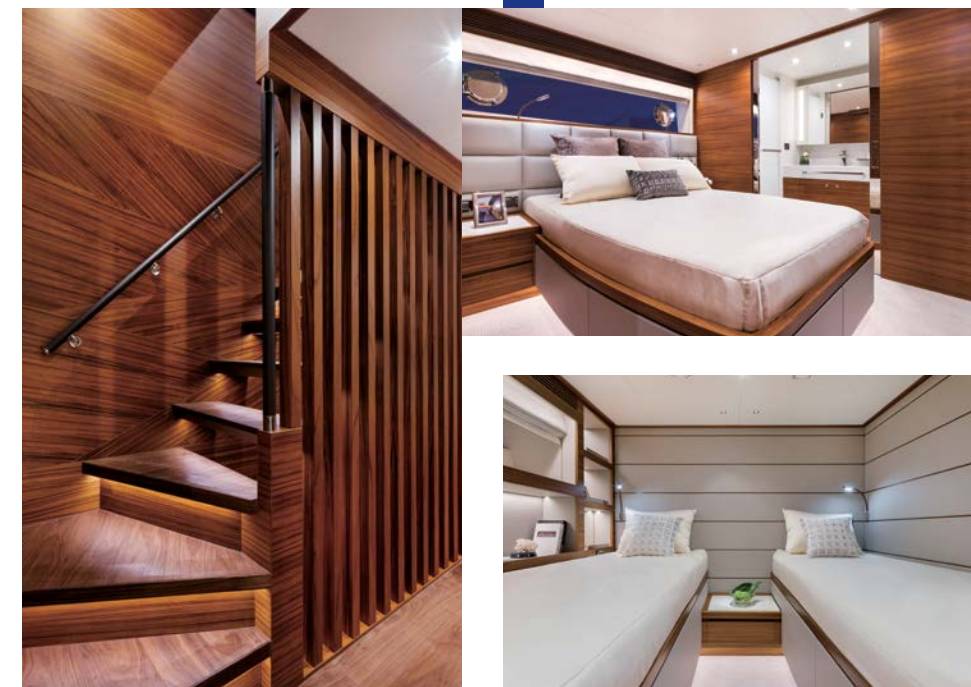


A hallmark of the FD Series design, the master suite is situated forward on the main deck. This sophisticated area features plentiful closet space as well as a modern headliner treatment over the king-sized bed that faces the his-and-hers ensuite.

Four additional ensuite staterooms comprised of two mirrored VIPs amidships, a convertible twin to port and a VIP in the bow are situated on the lower deck. Crew quarters for five are positioned aft of the engine room, with access to the spacious beach club fitted with a convertible settee/sunpad that accesses the water via the Hi/Lo swim platform.

The FD92's tri-deck design allows for multiple exterior spaces for entertaining and relaxing. On the bridge deck, the enclosed wheelhouse and skylounge opens aft onto the boat deck that features a bar with three fixed stools and Jacuzzi with its own counter area and barstools. The foredeck is outfitted with additional seating and lounging while the lightweight flybridge features a helm and comfortable L-shaped seating area. ➡

**THIS PAGE**  
Four further staterooms are situated on the yacht's lower deck.



## Specifications

### LOA

94' (28.66m)

### Beam

23' 3" (7.11m)

### Series

Fast Displacement (FD)

### Interior Design

Horizon Yachts

### Exterior Styling

Cor D. Rover

### Engines

Twin CAT C32B 2,000hp



FEATURE YACHT

# FD90 Skyline

*Specified to the highest standards,  
this four-stateroom yacht is  
bursting with custom touches.*







**THESE PAGES**  
Satin walnut, black glass and black lacquer finishes highlight the loft-like main salon, which is further set off by the full-height windows.

**In an active sales market, a few twists and turns are inevitable. Such is the case with this new contemporary-styled FD90, which was sold soon after her launch to an Australian owner who was impressed with her high-end features.**

Designed throughout to take advantage of the wide, 23' 3" beam and high-volume interior that defines the Cor D. Rover-designed Fast Displacement (FD) Series, the new FD90 greets visitors with an expansive aft deck. Here, a convivial al fresco conversation area features a custom convertible coffee table with strips of bronze inlay that hint at the contemporary Art Deco vibe within the interior.

Satin walnut, black glass and black lacquer finishes highlight the loft-like main salon, whose volume is amplified by floor-to-ceiling windows and comfortable, custom low-profile furniture including a large sofa with built-in storage. Sliding glass doors accessing the walkaround decks to port and starboard invite the outdoors into the dining area forward, and the fully-equipped galley can be open to the salon and dining area or closed via doors and a privacy screen. A custom bronze lighting feature highlights the dining area, and is controlled by the yacht's JUNG automation system, which allows the owner to control lighting, window treatments, audio and A/C via phone or iPad devices. The FD90 is the first FD Series yacht to be equipped with this system.



**LEFT**  
A JUNG automation system allows the owner to control lighting, window treatments, audio and A/C via phone or iPad devices.



## Inspired Features



smart glass privacy in master ensuite



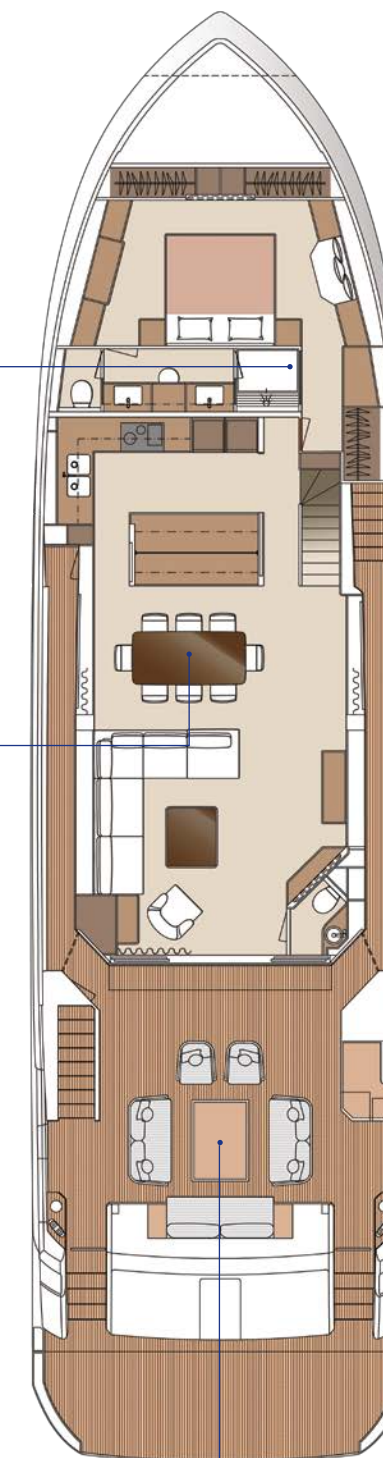
custom bronze light fixture



JUNG automation system for lighting, audio + a/c



custom convertible coffee table



MAIN DECK





A full-length smart glass wall provides privacy or natural light to the ensuite as desired.



**THESE PAGES**  
The yacht's four-stateroom layout includes an on-deck master (top), two queen staterooms on the lower deck, and a unique convertible VIP in the bow (opposite bottom right).



The full-beam master stateroom is situated furthest forward on the main deck, and offers plentiful wardrobe space as well as a built-in leather loveseat under the window to starboard. The spacious ensuite features a full-length smart glass wall for privacy when desired.

Three further ensuite staterooms comprised of mirrored queen-size staterooms amidships and a convertible twin/VIP in the bow reside on the lower deck. The lower guest foyer is highlighted by leatherette-covered walls with grooves of black lacquer that echo the yacht's sophisticated design. A spacious laundry room/storage area complements the staterooms in this area.



## Inspired Feature — CONVERTIBLE VIP





This FD90 has been designed with an enclosed skylounge and private wheelhouse configuration, which is accessed via a floating staircase along a painted feature wall. The wheelhouse features three fixed helm chairs and can be closed off from the cozy interior skylounge aft. The boat deck offers a bar with three bar stools and an expansive exterior lounge area with freestanding furniture that is easily shaded with a sun awning. Walkaround side decks access the additional entertaining and lounging space on the foredeck, which can also be shaded by a sun awning.

Offering crew quarters for four aft of the engine room, the new FD90 features a fully equipped beach club with a bar and a lounge settee that converts into a bed. ➡



## Specifications

### LOA

89' 2" (27.19m)

### Beam

23' 3" (7.11M)

### Series

Fast Displacement (FD)

### Interior Design

Horizon Yachts

### Exterior Styling

Cor D. Rover

### Engines

Twin MAN V12 2,000PS



Scan to Learn More  
About the FD90 Skyline.

**THESE PAGE**  
Spacious and inviting al fresco gathering areas with multifunctional touches extend from the foredeck (middle) to the boat deck (top and bottom).



**THESE PAGES**  
The enclosed skylounge (right and bottom right) follow aft of the private wheelhouse (top), which the crew will appreciate alongside the spacious crew quarters (below).





FEATURE YACHT

# THE FRIEND SHIP



*The new FD90 SUMO is outfitted for fun and entertainment.*



**Boating is booming Down Under, and Horizon Yachts Australia capped a record-breaking year with the delivery of several new builds, including the two FD90 yachts featured in this issue. Christened SUMO, this FD90 Skyline was commissioned by experienced boaters who knew exactly what they wanted in a new build.**







Intrigued by the space and amenities offered by the Fast Displacement (FD) Series design, the clients moved up from a Horizon E88 and specified several customizations that suited their onboard lifestyle.

SUMO features an enclosed skylounge configuration and a five-stateroom layout including an on-deck master. A large aft deck leads into the spacious main salon, which offers a comfortable seating area with a dayhead aft. Floor-to-ceiling windows amplify the high-volume interior, and sliding glass doors to port and starboard lend an al fresco feel to the interior dining area. Positioned forward of the galley on the main deck, the full-beam on-deck master stateroom offers built-in lounge seating, plentiful closet space and an ensuite with dual sinks.



**LEFT + TOP**  
Set off by a headliner with a black lacquer border, the dining table echoes the main walnut wood in a Chevron pattern.



*Conversation, laughter and panoramic views come standard in the main salon.*

**THIS PHOTO**  
Walnut and black lacquer set a tone of sophistication throughout the interior.





**BELOW**  
The attention to detail is demonstrated throughout, where stainless inlays set off the walnut woodworking in doors and cabinetry.



Outfitted in satin walnut with black laquer accents and Cambria stone highlights throughout, the interior exudes a sophisticated feel. The look continues on the lower deck, where four mirrored ensuite VIP staterooms accommodate guests in spacious comfort. A crew of four is accommodated aft of the engine room.

**THESE PAGES**  
Four equally-sized ensuite staterooms comprise the lower deck accommodations, while the master suite on the main deck (main photo and left) spans the yacht's full beam.





## Inspired Feature

CONVERTIBLE SUNPAD



The active owners prioritized entertaining and lounging throughout the deck spaces, from the adjustable sunpad and ample seating area specified for the foredeck to the beach club with its large bar serving guests on the swim platform. Highlighted by a heated Jacuzzi, a convertible seating and dining area, and a large bar finished in a mother-of-pearl mosaic, the semi-enclosed boat deck will undoubtedly be one of the most inviting areas onboard. This area provides a comfortable and protected exterior space



from which the owners can enjoy the beauty of the yacht's home port of Airlie Beach in Australia's Whitsunday Islands – and the kegerators installed on each deck will ensure that ice-cold beer is always within reach during those hot Aussie summer days out fishing on the reef. ➡



**THESE PAGES**  
The owners specified a semi-enclosed skylounge and plenty of seating areas on the exterior decks as well as built-in kegerators (left) for crisp refreshment.



## Specifications

### LOA

90' 1" (27.44m)

### Beam

23' 3" (7.11M)

### Series

Fast Displacement (FD)

### Interior Design

Horizon Yachts

### Exterior Styling

Cor D. Rover

### Engines

Twin CAT C18A 1,136hp



Fortune Favors the Bold



## THE **NEW** FD125 SKYLINE

LIMITLESS CUSTOMIZATION. MAXIMUM ENJOYMENT.

Designed to provide the ultimate personalized cruising experience, the FD125 superyacht is a customizable concept that challenges the limits of the imagination. Offering five spacious staterooms including an on-deck master suite, the new tri-deck FD125 offers elongated exterior decks with exceptional outdoor living opportunities as well as a high-volume interior customizable to the owner's vision.

**FD**: THE WORLD'S FASTEST GROWING YACHT SERIES

USA  
+1 561 721 4850  
horizonyachtusa.com

EUROPE  
+34 971 673 508  
horizonyachteurope.com

AUSTRALIA  
+61 7 5577 9009  
horizonyachtaus.com



# HORIZON LIFE

— DREAMS DEFINED. LIFE ON THE WATER. —



©RICHARD TARANTO

DESTINATIONS // HORIZON OWNERS // EVENTS // TOYS & EQUIPMENT →

DEFINE YOUR HORIZON



# *A Day in Chance Bay*

*Ten stunning Horizon yachts and their  
owners cruise to a beach luncheon in the  
Whitsunday Islands.*



**The annual Horizon Yachts Australia Owners' Rendezvous**

was scaled back to a single-day beach lunch due to ongoing COVID-19 restrictions impacting owner movements. Instead of the usual multi-day fest, Horizon owners were invited to the glorious Whitehaven Beach in Australia's Whitsunday Islands for a mid-October owners' luncheon.

Ten Horizon yachts ranging from 52 to 87 feet gathered for the highly anticipated event, their owners and guests ready to enjoy the picture-perfect weather.



**THESE PAGES**  
The day offered near-perfect conditions for Horizon owners and their guests to enjoy a group cruise to the protected bay.



Despite the near-perfect conditions, the winds were expected to increase in the afternoon, so the Horizon team made the decision to relocate the lunch to Chance Bay, on the protected side of Whitsunday Island. It was the perfect decision.

*Ten Horizon Yachts Ranging From 52 to 87 Feet  
Gathered for the Highly Anticipated Event.*





The guests and their yachts departed Hamilton Island and enjoyed choreographed formations during the cruise to Chance Bay. A professional photography team joined the entourage by helicopter to capture the cruising formations.



ENTERTAINED BY THE HELICOPTER MANEUVERS, OWNERS AND GUESTS ENJOYED VISITING ABOARD EACH YACHT.



**THESE PAGES**  
Horizon's longstanding tradition of hosting owner rendezvous has inspired a family spirit that creates lasting friendships and shared memories.







Framed by tropical island mountains and surrounded by a coral reef, the white-sand Chance Bay beach almost appeared as if it had been reserved especially for the Horizon event. Upon arrival guests were greeted on the beach with chilled beverages and most opted for a refreshing swim prior to lunch.

Under the shade of the long table marquee, guests enjoyed the celebratory luncheon of prawn cutlets, Moreton Bay bugs, tiger prawns, oysters, grilled eye fillets and a variety of salads. After lunch, everyone returned to the refreshing waters of Chance Bay for stories and laughter until it was time to head back home.



**THESE PAGES**  
Laughter ensued as guests enjoyed the seafood luncheon and the refreshing waters of Chance Bay.

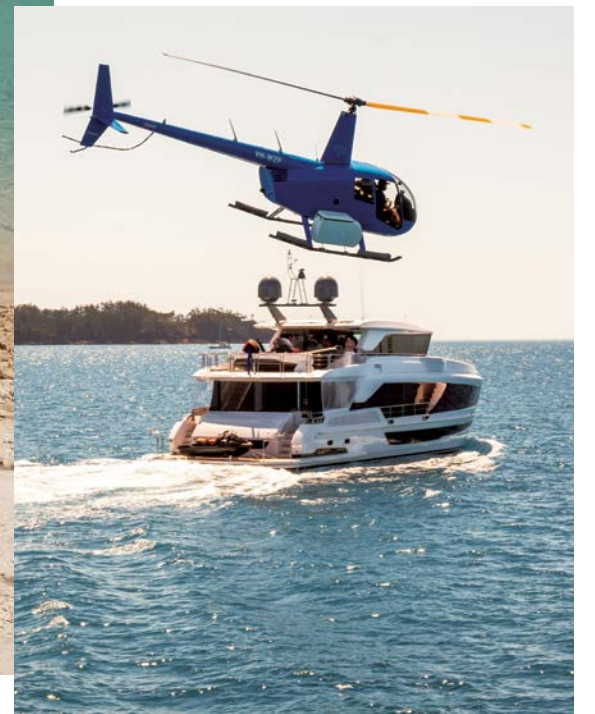


*The 2021 Owner Luncheon Capped a Record Sales Year for Horizon Yachts Australia.*



The modified itinerary enabled guests to experience a new piece of Whitsunday paradise. Chance Bay provided owners an idyllic location to enjoy the Horizon Yachts Australia Owner Luncheon while enjoying each other's company. It was a fabulous day for all!

For more information on Horizon's events and Owners' Rendezvous, please contact Horizon Yachts at [marketingcenter@horizonyacht.com](mailto:marketingcenter@horizonyacht.com). ➡



*Scan for the Video of the 2021 Owner Luncheon.*



# Horizon Yacht USA Sells Five Yachts Following the 2021 Fort Lauderdale International Boat Show



## The 62nd annual Fort Lauderdale International Boat Show (FLIBS)

was a resounding success. Pent-up demand spurred in part by various aspects of the pandemic converged with abbreviated inventory to culminate in a show dominated by serious buyers. For Horizon Yachts, the 2021 FLIBS was one for the record books, with a total of five yachts sold in the period immediately following the show. Located on the F Dock, Slips 600-606, Horizon enjoyed a prominent display that showcased the world-debuting E81 model, *Valiant*, the brand new FD80, *Parabolic* and the tri-deck FD92, *Crowned Eagle*.

Pioneers in the high-volume design realm that has taken the yachting world by storm, Horizon Yachts this year unveiled a new high-volume model with a sleek exterior profile that defines its



popular E Series of yachts. The new E81 model features a beamy hull that affords a four-stateroom layout and an extremely spacious interior. On display at the show was Hull Two, christened *Valiant*, which the owners specified with an office in lieu of the fourth stateroom. *Valiant* is the first E81 to feature an enclosed skylounge configuration. This model was extremely popular with visitors looking for a streamlined exterior profile with ample deck space, an open layout and a bright and modern interior design.

Appearing alongside the debuting E81 was a brand new FD80 Skyline, a model that has carved out a niche within the Cor D. Rover-designed Fast Displacement (FD) Series among active owners who appreciate its build quality, four-stateroom layout and multiple exterior areas for lounging and entertaining. Built for a first-time owner and christened *Parabolic*, this latest FD80 features an enclosed skylounge configuration with a full-beam master stateroom on the main deck and three guest cabins on the lower deck, with crew quarters for four and a beach club situated aft. Attracted from the docks by the yacht's beach club, visitors of *Parabolic* were quick to comment on the yacht's impressive volume and superb layout in relation to its overall length.

The third Horizon yacht on display was the first tri-deck build for the FD Series and was an extremely popular model at the show thanks to her generous interior and exterior space, tri-deck configuration, beach club and five-stateroom layout. Christened *Crowned Eagle*, this 2020 FD92 has been enjoyed by her owners in The Bahamas and the Caribbean since being delivered.



**THIS PAGE**  
It was all sunshine and smiles at the Horizon Yacht USA display, which drew record numbers of visitors each day.

Each Horizon yacht on display at the 2021 FLIBS was a showcase of innovation and customization – each built for a Horizon owner and incorporating the layout and amenities that suit the active yachtsman. “We entertained a combination of potential and current clients who had pre-booked their appointments as well as potential customers stopping by the Horizon stand for the first time,” says Roger Sowerbutts, Horizon Director of the Americas. “The fact that Horizon builds high-caliber, innovative and technologically-advanced yachts that can be customized to suit an owner’s style and preference attracted plenty of interest in the variety of models we have to offer, from the entry-level V68 and FD75 to the superyacht FD140.”

The activity generated by the show continued long after the horns signaled the close of the event, with a total of five yachts—from inventory to new build—being sold as of press time. ➡





# Horizon Power Catamarans Sells 50<sup>th</sup> Hull

## The deal for a new build PC60 was signed during the Fort Lauderdale International Boat Show



### In a milestone for the record books, the Horizon Power Catamaran

Company announces the sale of the 50th PowerCat (PC) yacht during the 2021 Fort Lauderdale International Boat Show. The deal coincides with the company's 10<sup>th</sup> Fort Lauderdale Boat Show anniversary and underscores the continued and rising popularity of the Horizon power catamaran builds.

The Horizon PC Series range starts with the entry-level PC52 and includes a PC60, PC65 and PC74 flagship. Offered in enclosed or open bridge configurations with multiple layout options, the power catamaran design is extremely popular among experienced yacht owners who appreciate the comfort, stability and interior volume that the twin hull design affords, as well as the shallow draft for exploring the idyllic cruising grounds of The Bahamas and Caribbean.

On display at the show itself were two brand-new PowerCats: a PC60 and a PC52. Featuring an open salon and an expanded flybridge deck that will be standard on all future PC60s, the PC60 on display was commissioned by experienced owners who transitioned from owning sportfishers to the catamaran design. Christened *Mangata*, which is the Swedish word to describe the moon's reflection on the water, the yacht features two large staterooms in the portside hull and a spacious master suite occupying the entire starboard hull. The latest VEEM propellers add to the fuel efficiency and performance of this model, which the owners plan to cruise in Florida and The Bahamas.

Soon after its launch, the newest Horizon PC52 was contracted just prior to the Fort Lauderdale Boat Show for owners who had cruised extensively aboard their single-hulled



**THIS PAGE**  
The Power Catamaran Company completed the sales of the two yachts on display at FLIBS, as well as a new PC60 following the show, to mark the 50<sup>th</sup> hull sold overall.



and expedition yachts. They turned to the Horizon PC Series to facilitate their plans to cruise The Bahamas and selected the PC52 for its inviting and open layout with galley-aft, salon-forward configuration, open flybridge, and spacious guest quarters comprised of a master, queen and twin in the hulls.

The aforementioned PC52 sale was closed during the Fort Lauderdale Boat Show, while the contract for another new build PC60 was signed by repeat Horizon PowerCat owners.

"The latest PC60 sale not only marks the 50<sup>th</sup> new build power catamaran that we have sold in ten years, it reaffirms the market's appreciation of the design detail, build quality and extended service that we provide to each client," says Richard Ford, Founder and CEO of The Power Catamaran Company, representatives of Horizon Power Catamarans.

Not only is each PowerCat delivered to its owner fully commissioned and spec'd with all tools, spares and specialized cleaning supplies an owner will need, Richard personally joins the owners at delivery for a shakedown cruise to provide hands-on training and demonstration of all of the yacht's unique features and manages the warranty and service post-sale.

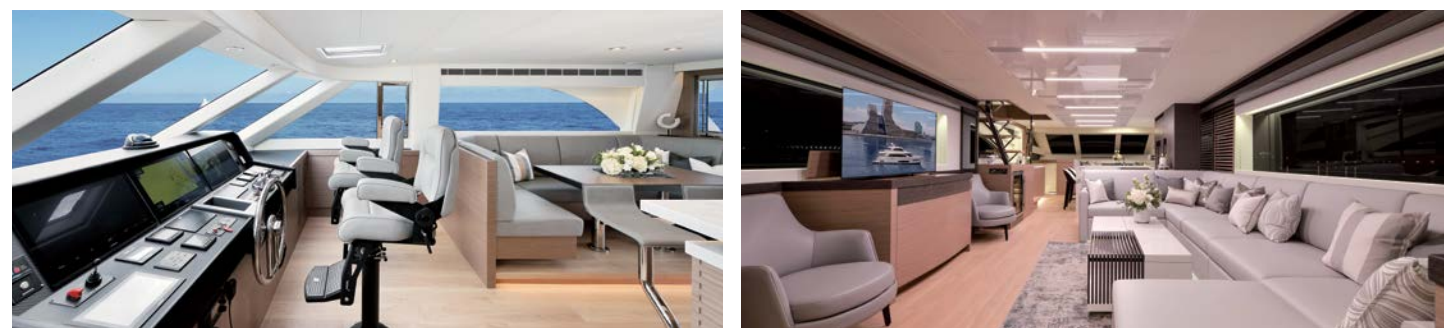
For more information on the Horizon Power Catamarans, please contact The Power Catamaran Company at +1 954 803 8102 or email [richard@powercatco.com](mailto:richard@powercatco.com). ➡



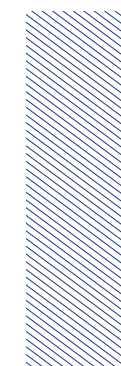


## OWNER EXPERIENCE

Horizon Yachts and Owners on the Scene



©RICHARD TARANTO / SUPERYACHT CREATIVE



# CHEERS!

The sun was shining in Fort Lauderdale as the new Horizon E81 *Valiant* was delivered to her owners.

**Surrounded by the Horizon Yacht USA (HYUSA) staff and** brokerage teams, the owners of the brand new E81 celebrated the delivery of their new yacht at the HYUSA marina office in Fort Lauderdale. Christened *Valiant*, the yacht is the second hull of the new high-volume E81 model and the first Horizon build for the experienced owners.

Spacious exterior areas, a three-stateroom-plus-office layout and a modern interior décor are the main features of the new build, but the owners were also able to incorporate some layout changes to better suit their onboard lifestyle. The main deck aft, for example, spans the yacht's 20' 6" beam and features a fixed dining table and bar area as well as custom storage requested by the owners to house the sea stairs and deck chairs. Another owner request was crew quarter and engine room access via stairs from this deck that add to the boat's functionality.

Functional living is important in any build, and aboard *Valiant* every space was considered for practicality, storage and ease of use.

While the standard E81 arrangement offers four staterooms on the lower deck, the owners requested a full-beam master suite with a spacious head and shower, a large ensuite VIP forward, and a twin guest stateroom to starboard. In the space normally occupied by the fourth stateroom, the owners specified an office/library with a built-in workspace and custom cabinetry.

Working with Horizon Yacht USA as well as the yard and design teams from afar during the height of the pandemic had its challenges, but the result was well worth the extra Zoom calls and emails, say the owners. They specified a modern yet comfortable aesthetic for the interior, which features an expansive main salon with an open galley and country kitchen arrangement forward. To port, an open staircase – the base of which houses a 46-bottle wine fridge – leads up to the spacious enclosed bridge. Within the enclosed area, a U-shaped starboard-side settee faces a large bar to port with three bar stools. A helmstation is positioned forward while additional seating and a barbecue grill are situated on the boat deck. Two-toned white/silver oak with light quartz

surfaces and steel blue and grey accents feature throughout, as do contemporary design elements such as wood slats and waterfall edges.

The aforementioned exterior areas are another prominent feature for this yacht, aboard which the owners plan to cruise the eastern seaboard as well as the warm waters of The Bahamas and

Caribbean from their Miami-based home port. Accessed via walkaround side decks, an inviting entertainment area is situated on the bow and includes a large U-shaped settee and dinette and a large sunpad. The area is easily shaded by a sun awning and will undoubtedly be one of the most preferred areas onboard.

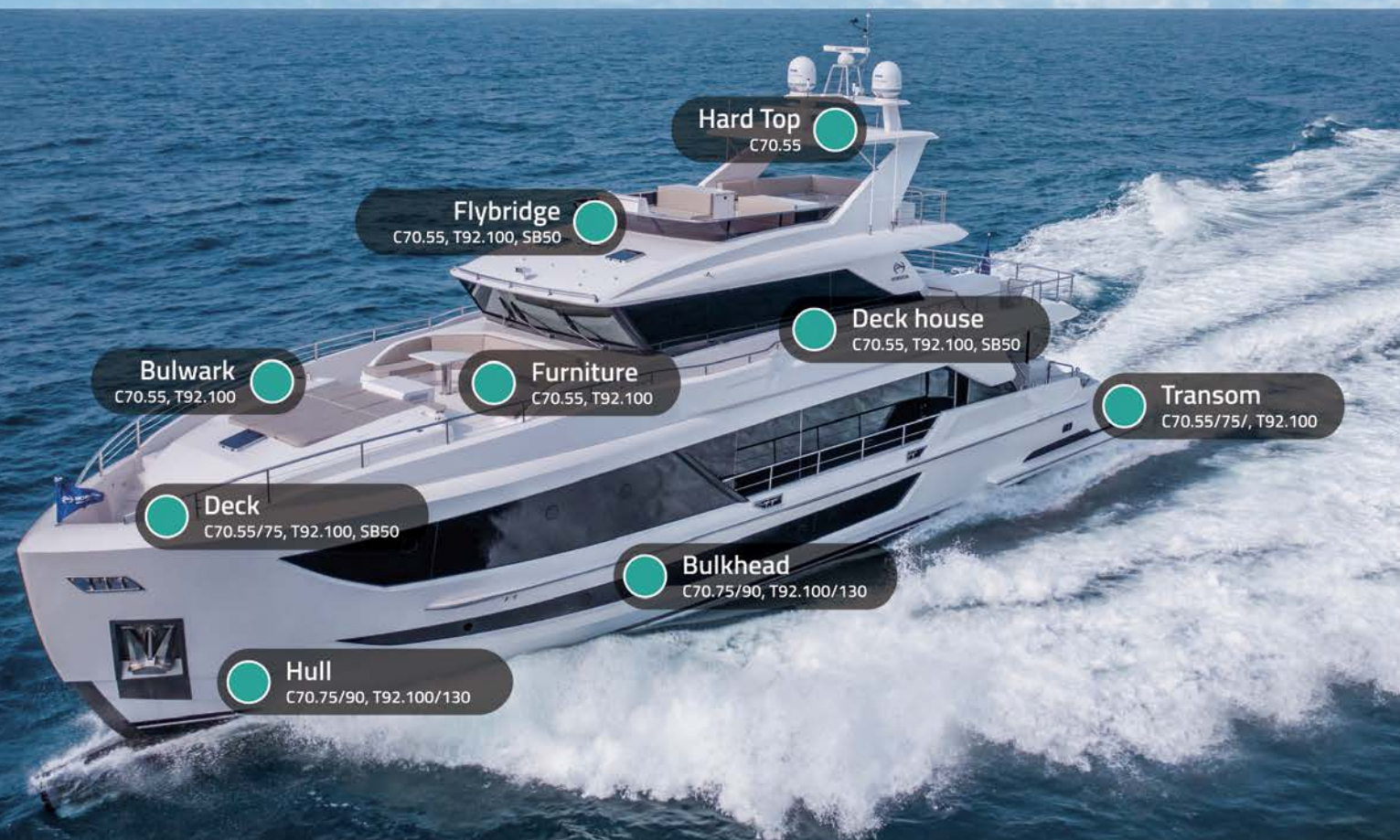
"The yard was always open to our ideas and to seeing how they could make our requests happen, which made the whole process very pleasant," say the owners. "That was the attitude we were looking for. They did a really great job and we are so pleased with the result." ➡



**YACHT NAME:** VALIANT  
**MODEL:** E81  
**OWNERS:** American



# The future is greener



WECHAT



WEBSITE

3A Composites (China) Ltd.  
Shangfeng Road 955, Building 6, Pudong 201201 Shanghai, China

Tel: +86 21 585 86 006 Fax: +86 21 338 272 98  
Website: [www.3acorematerials.com](http://www.3acorematerials.com)  
E-mail: [corematerials.asia@3acomposites.com](mailto:corematerials.asia@3acomposites.com)



## —ON THE— CALENDAR

### February

Seattle Boat Show  
Seattle, Washington  
February 4 to 12, 2022

Miami Yacht Show  
Miami, Florida  
February 16 to 20, 2022

Horizon Yacht USA Winter Showcase  
Fort Lauderdale, Florida  
Contact for details

### March

Palm Beach Int'l Boat Show  
Palm Beach, Florida  
March 24 to 27, 2022

### April

Palma International Boat Show  
Palma de Mallorca, Spain  
April 28 to May 1, 2022

### May

Sanctuary Cove Int'l Boat Show  
Sanctuary Cove, Australia  
May 19 to 22, 2022

### July - August

Sydney International Boat Show  
Sydney, Australia  
July 28 to Aug 1, 2022  
September



### September

Cannes Yachting Festival  
Cannes, France  
September 6 to 11, 2022

Monaco Yacht Show  
Monaco  
September 28 to October 1, 2022





Brand New Inventory

Patience is a virtue...  
New inventory coming soon!



AVAILABLE IN U.S. SPRING 2022

### HORIZON FD110 TRI-DECK MOTORYACHT

- Superyacht styling with tri-deck design
- Crew quarters for six
- High-volume interior
- Enclosed skylounge w/ dayhead
- On-deck master + four ensuite staterooms
- Twin CAT C32A 1,900hp engines

FD SERIES: FD75 // FD80 // FD90 // FD100 // **FD110** // FD125

### HORIZON FD80 SKYLINE MOTORYACHT

- Semi-open flybridge w/ seating + bar
- On-deck master + 3 ensuite + crew
- Enclosed pilothouse w/ dayhead
- Convertible table for formal dining
- Beach club with Hi/Lo platform
- Twin CAT C32A 1,200hp engines

FD SERIES: FD75 // **FD80** // FD90 // FD100 // FD110 // FD125



AVAILABLE IN AUSTRALIA SUMMER 2022

### HORIZON FD80 SKYLINE MOTORYACHT

- Enclosed skylounge w/ dayhead
- Spacious 23' beam
- On-deck master + 3 ensuite + crew
- Convertible table for formal dining
- Beach club with Hi/Lo platform
- Twin CAT C32A 1,600hp engines

FD SERIES: FD75 // **FD80** // FD90 // FD100 // FD110 // FD125

AVAILABLE IN U.S. FALL 2022

### HORIZON FD80 SKYLINE MOTORYACHT

- Semi-enclosed skylounge w/dayhead
- Spacious beach club
- Four staterooms w/ on-deck master
- Crew quarters for four
- Boat deck w/Jacuzzi
- Twin MTU 10V2000 1,600hp engines

FD SERIES: FD75 // **FD80** // FD90 // FD100 // FD110 // FD125

AVAILABLE IN U.S. SUMMER 2023

### HORIZON FD90 SKYLINE MOTORYACHT

- Touch-n-go helipad
- 5 staterooms w/ on-deck master
- Semi-open skylounge w/ bar
- Beach club + crew quarters
- BBQ + Jacuzzi on boat deck
- Twin MAN V8 1,300hp engines

FD SERIES: FD75 // FD80 // **FD90** // FD100 // FD110 // FD125

AVAILABLE IN U.S. FALL 2022

### HORIZON FD75 MOTORYACHT

- Raised pilothouse design
- Galley-aft layout
- Open flybridge w/ dayhead
- ABT Zero Speed stabilizers
- On-deck master + three ensuite
- Twin CAT C18A 1,136hp engines

FD SERIES: **FD75** // FD80 // FD90 // FD100 // FD110 // FD1250

AVAILABLE IN EUROPE SPRING 2023

### HORIZON FD100 TRI-DECK MOTORYACHT

- Tri-deck configuration w/ beach club
- Open flybridge
- 5 spacious ensuite staterooms
- Voluminous 23' 3" beam
- Enclosed skylounge w/ dayhead
- Twin CAT C32A 1,900hp engines

FD SERIES: FD75 // FD80 // FD90 // **FD100** // FD110 // FD125

USA  
+1 561 721 4850  
horizonyachtusa.com

EUROPE  
+34 971 673 508  
horizonyachteurope.com

AUSTRALIA  
+61 7 5577 9009  
horizonyachtaus.com







## Network of Operations



### Horizon Shipyard

SINCE 1987  
462,540 SQFT

#### FEATURES

YACHTS UP TO 150FT LOA  
INTERIOR DESIGN CENTER



### Atech Composites

SINCE 2000  
249,070 SQFT

#### FEATURES

COMPOSITE LAB  
TECHNOLOGY SHOWROOM



### Vision Shipyard

SINCE 2001  
124,530 SQFT

#### FEATURES

YACHTS UP TO 80FT LOA  
INTERIOR DESIGN CENTER



### Premier Shipyard

SINCE 2005  
258,330 SQFT

#### FEATURES

DELIVERY CENTER  
REFIT SERVICES



### Horizon City Marina

SINCE 2014  
YACHTS UP TO 200FT

#### FEATURES

FULL SERVICE MARINA  
WATERFRONT DINING

## Worldwide Distribution Network



## Contact Your Local Representative

### Asia

#### TAIWAN

##### Horizon Group

No. 8, Kuang Yang St., Hsiao Kang  
Kaohsiung, 812010 Taiwan, R.O.C.  
Tel: +886 7 860 7770  
E-mail: [marketingcenter@horizonyacht.com](mailto:marketingcenter@horizonyacht.com)

#### JAPAN

##### Creation Co Ltd.

13, Kitahato-Cho  
Sakai-City, Osaka, Japan  
Tel: +81 722 235884  
E-mail: [info@creation-marine.co.jp](mailto:info@creation-marine.co.jp)

#### HONG KONG

##### Horizon Yachts (HK) Ltd.

AML No.21, Po Chong Wan  
Shum Wan Road, Aberdeen, Hong Kong  
Tel: +852 2873 2877  
E-mail: [mariana@horizonyachthk.com](mailto:mariana@horizonyachthk.com)

#### THAILAND / MALAYSIA / SINGAPORE

##### Derani Yachts Co. Ltd

Phuket Boat Lagoon 20/37 Moo 2,  
Thepkasattri Road, Phuket, 83000, Thailand  
Tel: +66 (0)81 893 0272  
E-mail: [hakan@derani-yachts.com](mailto:hakan@derani-yachts.com)

### Oceania

#### AUSTRALIA

##### Horizon Yacht Australia

44C The Promenade  
Sanctuary Cove, QLD 4212  
Tel: +61 7 5577 9009  
E-mail: [sales@horizonyachtaus.com](mailto:sales@horizonyachtaus.com)

### America

#### USA – FLORIDA

##### Horizon Yacht USA

North Palm Beach Office (USA HQ)  
1201 U.S. Highway 1, Suite 1  
North Palm Beach, FL 33408

Fort Lauderdale Office  
Hall of Fame Marina  
435 Seabreeze Boulevard  
Fort Lauderdale, FL 33316  
Main Tel: +1 561 721 4850  
Service: +1 561 721 6068  
E-mail: [sales@horizonyachtusa.com](mailto:sales@horizonyachtusa.com)

##### The Powercat Company (PC Series Only)

2525 Marina Bay Drive West  
Fort Lauderdale, FL 33312  
Tel: +1 888 839 3071  
E-mail: [info@horizoncatamarans.com](mailto:info@horizoncatamarans.com)

### Europe & Russia

#### SPAIN

##### Horizon Yacht Europe

Avd. Ingeniero Gabriel Roca, 20  
07157 Puerto de Andratx, Mallorca, Spain  
Tel: +34 971 673 508  
E-mail: [sales@horizonyachteurope.com](mailto:sales@horizonyachteurope.com)





THE HORIZON FLEET

# Our Series Defined



PC  
SERIES

Elegant Design, Luxurious Amenities, Ultra Comfortable Cruising



FD  
SERIES

Innovation, Efficiency, Style, and Space



FD100 SKYLINE

FD100 TRI-DECK



FD110 SKYLINE

FD110 TRI-DECK

FD125



V  
SERIES

Timeless, Versatile, Customizable



RP  
SERIES

Multi-Functional Exterior Areas and Superyacht Space



P  
SERIES

Superyacht Styling, Fully Customized Build



E  
SERIES

Seaworthy, Sporty, Something for Everyone



EP  
SERIES

Designed to Inspire, Built to Explore



Coming Soon

# FD80



## Chic Superyacht Sophistication

Indulge in all of the comforts of home aboard the new FD80, a four-stateroom yacht offering a beach club, crew quarters, Jacuzzi and plentiful deck areas, with an interior package of sumptuous elegance. ➔

GOLD ANCHOR MARINA

WORLD CLASS AMENITIES

WATERFRONT DINING

EXPERIENCE CITY LIFE

HORIZON CITY MARINA



**A GOLD ANCHOR MARINA, A GATEWAY TO LUXURY.**  
The world class Horizon City Marina accommodates yachts up to 200 feet (60m) in 12 berths and alongside 1,100 feet of environmentally-friendly floating docks. Enjoy complete yachting services and amenities in Asia's up and coming leisure destination.

+886 963 713 993 [hcm.horizonyacht.com](http://hcm.horizonyacht.com)





*FREEDOM LIES IN BEING BOLD*



Introduced to the world market in 2016, the Horizon Fast Displacement (FD) Series has taken the yachting industry by storm, noted for its striking style, appreciated for its well-planned layout, and praised for its exceptional stability and performance. Much of the success of this series, designed in collaboration with Cor D. Rover, can be attributed to our clients, who provide the inspiration for enhanced functionality and ingenious design ideas. The series offers megayacht living and proven performance.



**USA**  
+1 561 721 4850  
[horizonyachtusa.com](http://horizonyachtusa.com)

**EUROPE**  
+34 971 673 508  
[horizonyachteurope.com](http://horizonyachteurope.com)

**AUSTRALIA**  
+61 7 5577 9009  
[horizonyachtaus.com](http://horizonyachtaus.com)