

FD SERIES



FD75 // FD80 // FD90 // FD100 // FD110 // FD125

 **HORIZON**
WORLD CLASS YACHTS

FREEDOM LIES IN BEING BOLD

"With the FD Series, we directly address the market's demand for style, space and performance. Traditional yacht design wouldn't accommodate the layouts and features we wanted, so advanced engineering and careful planning has been a necessity for many of the FD models. This is exactly what sets Horizon apart from other builders - our drive for innovation and our willingness to push the proverbial envelope." — CEO John Lu

Defining the FD Series

VOLUME

The FD Series yacht offers interior space and volume that is unrivaled, allowing for layouts and amenities once limited to much larger builds.

STYLE

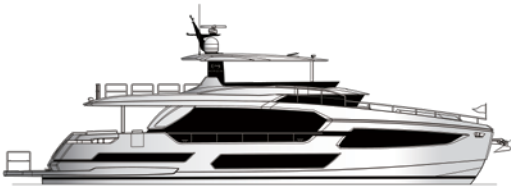
From the design studio of Cor D. Rover, the FD Series yacht is defined by large windows, generous deck spaces and a striking, head-turning profile.

COMFORT

The FD Series yacht boasts an innovative High Performance Piercing Bow and hull design that affords superb comfort in all sea conditions.

Current Models

FD75



Tailored to the Adventurous Yachtsman

FD80



On-Deck Master and Beach Club

FD90



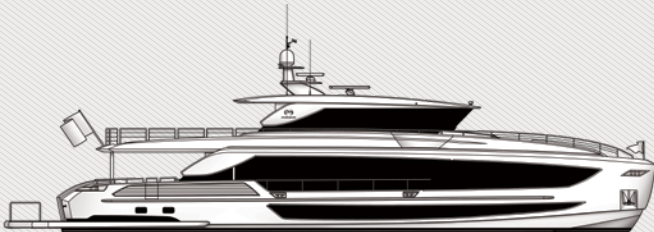
Five Staterooms, Infinite Options

FD100

Innovation on Every Level



TRI-DECK



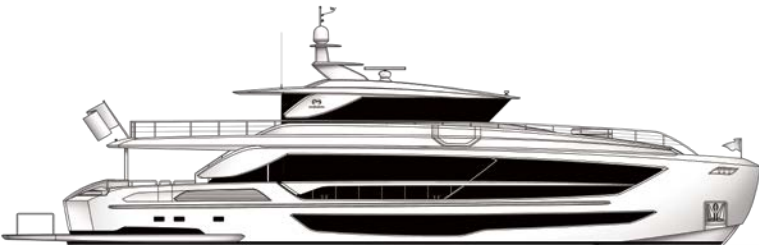
SKYLINE

FD110

Volume, Views, Versatility



TRI-DECK

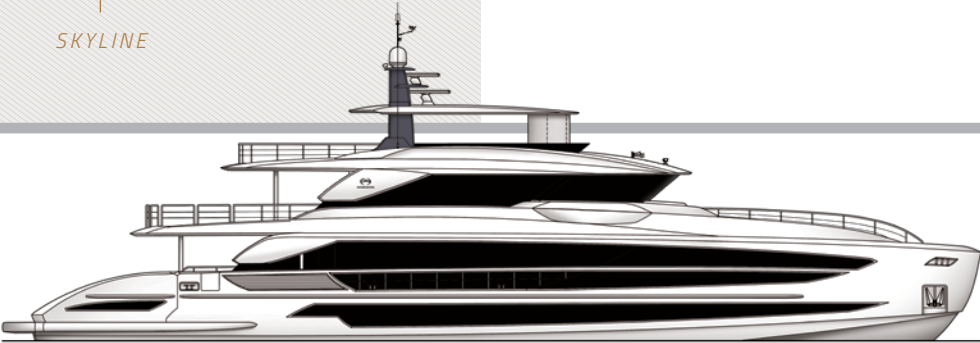


SKYLINE

CUSTOMIZATION COMES STANDARD.

Each model featured is the result of a design evolution accommodating an owner’s vision.

The FD Series yacht can be customized and engineered to your preference.



FD125

Luxury, Space, Sophistication

Design & Performance

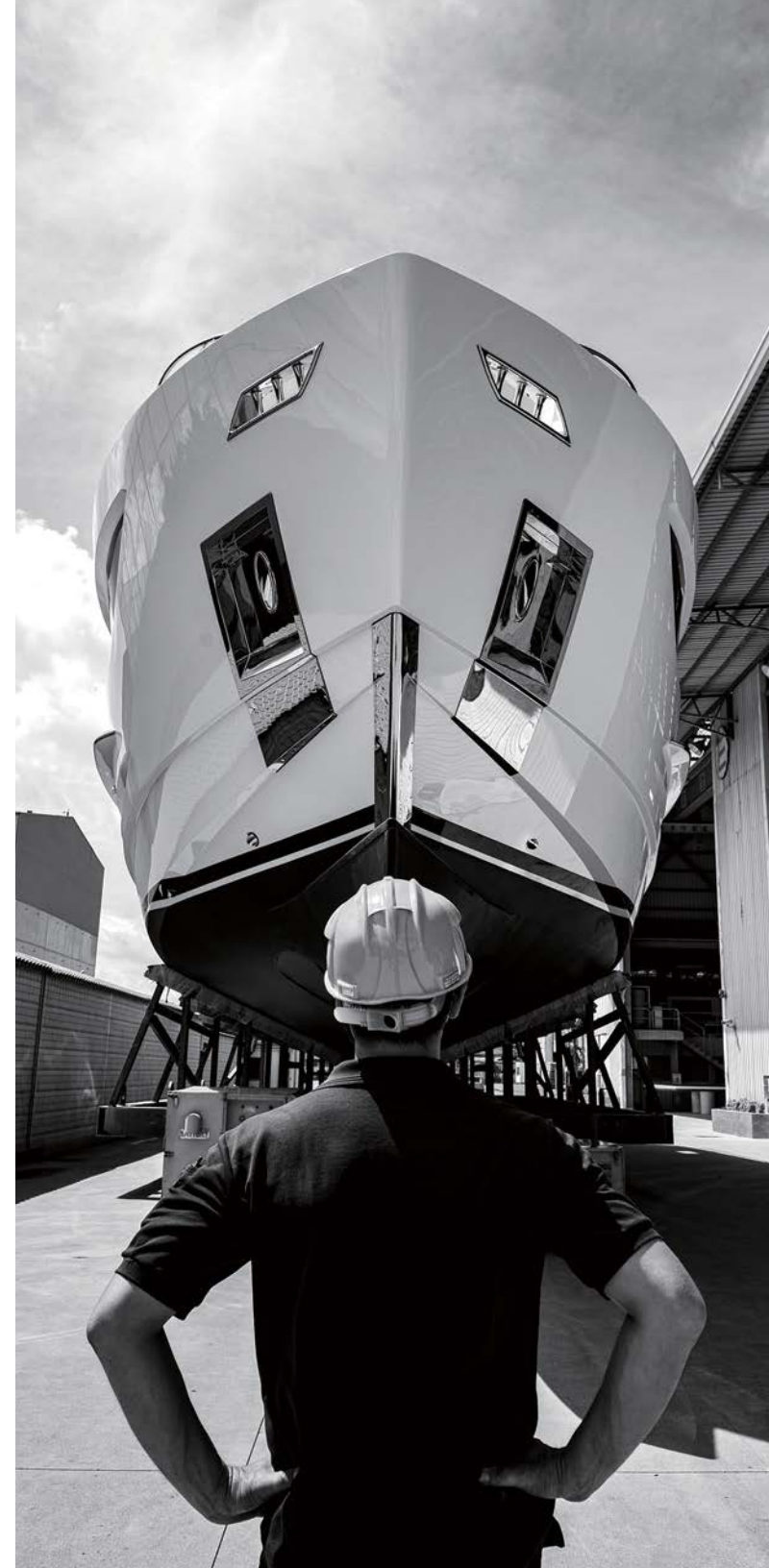


Design Team

A COLLABORATION IN INNOVATION.

At Horizon, our 35 years of yacht building experience has allowed our in-house team of naval architects, engineers and craftsmen to consistently improve upon each build and develop new models. Our one million-square-foot complex encompasses four state-of-the-art facilities within the vibrant yachtbuilding center of Kaohsiung, Taiwan.

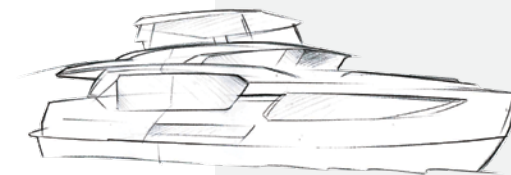
DESIGN TEAM // FD SERIES



IN COLLABORATION WITH

Cor D. Rover
DESIGN

Horizon partnered with leading Dutch designer Cor D. Rover (right) to conceptualize the FD Series, the first of its kind, in a revolutionary design that efficiently combines style and space with performance and comfort.





Horizon Headquarters



THESE PAGES

At the Horizon Design Center, clients can select all onboard items, from stonework and woodwork, to fabrics and finishes, fixtures, hardware, china and glassware.





The High Performance Piercing Bow (HPPB)

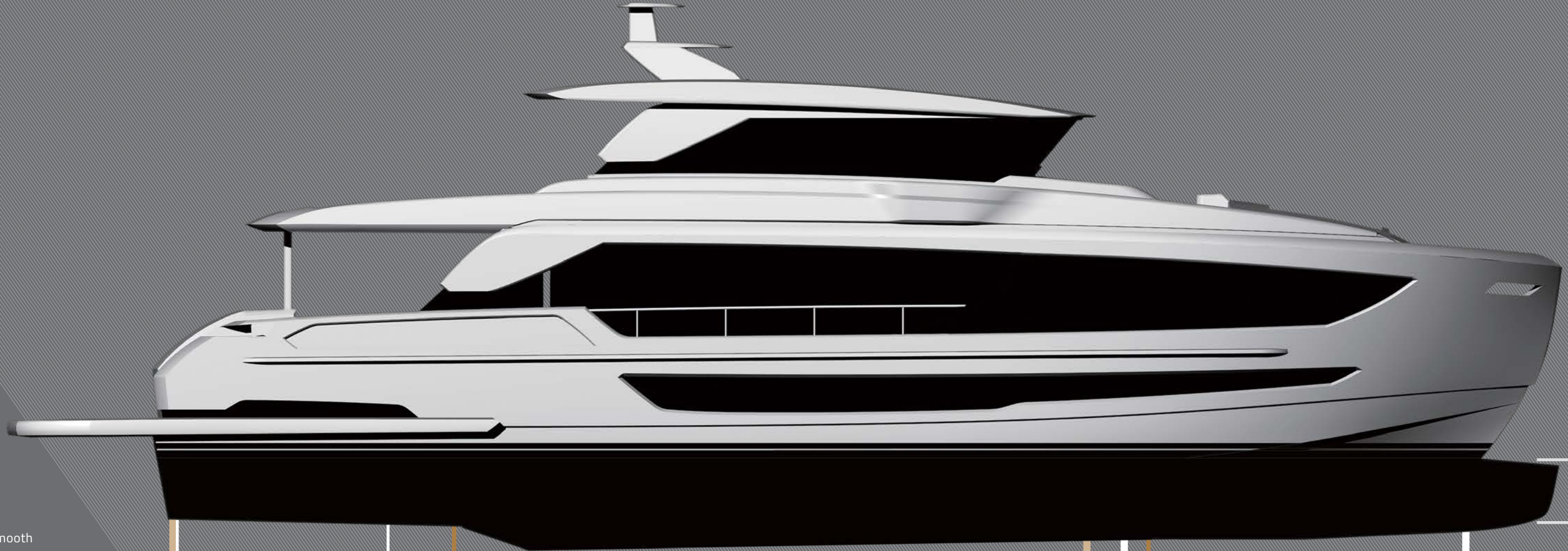
EFFICIENT CRUISING PERFORMANCE.

The FD Series features a High Performance Piercing Bow (HPPB) – a proprietary design by Horizon Yachts in consultation with Cor D. Rover. This design, in conjunction with the hybrid hull shape and tunnel design, delivers a shallow draft, more comfortable ride, lower resistance and excellent stability. The HPPB and hull design demonstrated across-the-board hydrodynamic improvements in both tank and CFD testing. While alternative bow designs that feature protrusions work more efficiently at either high or slower speeds, the HPPB brings both efficiency at slower speeds and performance at higher speeds.



Hull Design

The FD hull design delivers lower resistance and a smooth transition in all speed ranges for more efficient cruising.



TUNNEL

A properly designed tunnel will reduce resistance and decrease draft.

SOFT CHINE

A soft chine midship & aft in the hull generates smaller waves and reduces the resistance hump at hull speed.

HARD CHINE

A hard chine at the bow ensures a dry ride and increases the lift force.

LONG SKEG

The long skeg offers larger lateral underwater surface area and excellent directional stability. These two features offer good maneuverability and increase comfort for onboard guests.

HIGH PERFORMANCE PIERCING BOW

The High Performance Piercing Bow is not only designed for high efficiency but also for a greater hull speed. The submersed sharp bow underwater makes it easier to cut through underwater currents, so the HPPB increases the length of the waterline and reduces the entrance angle of the bow wave. This also enhances ride comfort in head seas by damping the motion while benefitting the hydrodynamic performance across the board.

Models & Configurations



FD75

Tailored to the Adventurous Yachtsman

THE GAME-CHANGER.

Taking its place at the entrance of a series known for unparalleled volume, innovative functionality and intelligent layout, the FD75 is a remarkable achievement in terms of design and naval architecture.

Offering an on-deck master suite and up to three additional ensuite staterooms, the FD75 is the perfect platform upon which you can define your unique layout. Options include a beach club, an open or enclosed galley forward or aft, an enclosed or open bridge, multiple crew area configurations and much more.





Main Deck Aft



Flybridge



Main Salon



THESE PAGES
To achieve layout flexibility with a full-beam, on-deck master and maintain the volume and innovative features that define the FD Series required thoughtful consideration and expert engineering.



**for those who
change the game**

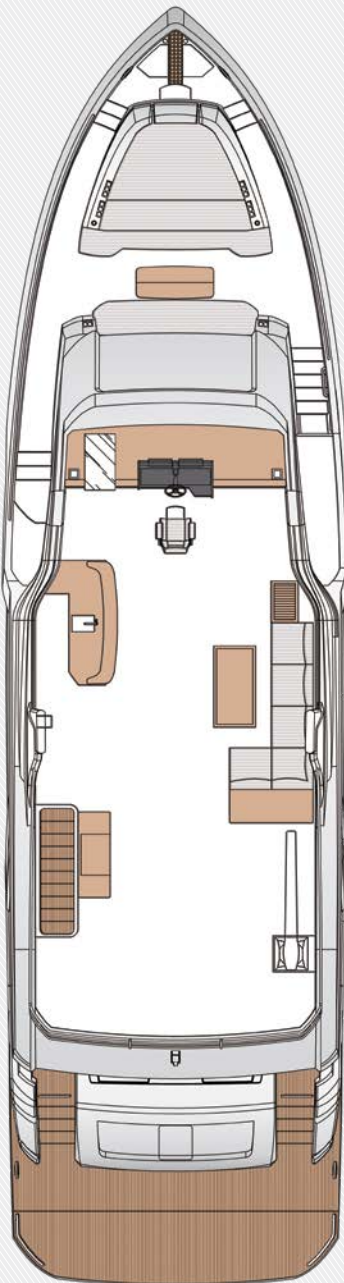
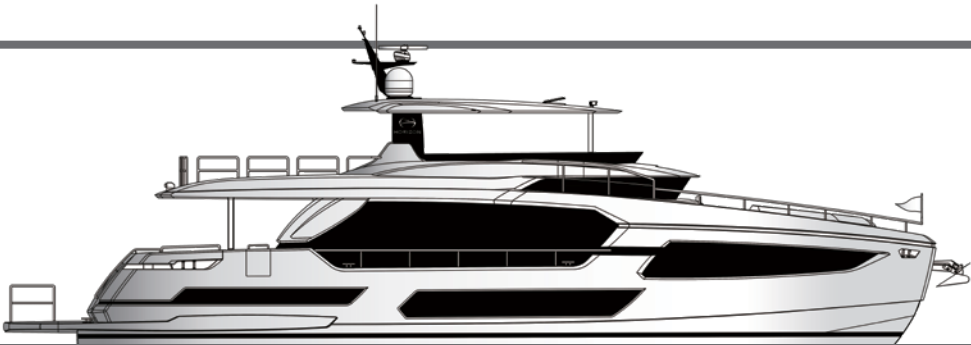
FD75 Specifications and Layout

L.O.A.	75' (22.86m)
L.W.L.	67' 1" (20.45m)
Beam	20' 4" (6.2m)
Draft (half load)	5' 8" (1.73m)
Displacement (half load)	149,760lbs (67.93 tons)
Fuel Capacity	2,400 US gals (9,085ltrs)
Fresh Water Capacity	300 US gals (1,136ltrs)
Engines	Twin CAT C18A 1,136bhp
Generators	Twin Onan 22.5kW (50Hz) or Twin Onan 29kW (60Hz)

CUSTOMIZATION CAPABILITIES

As with every Horizon yacht, customization is embraced and encouraged. Aboard the FD75, popular options include incorporating a fully equipped beach club aft, modifying the main salon to feature a formal dining and galley forward arrangement, or incorporating a convertible dining table to maximize the space.

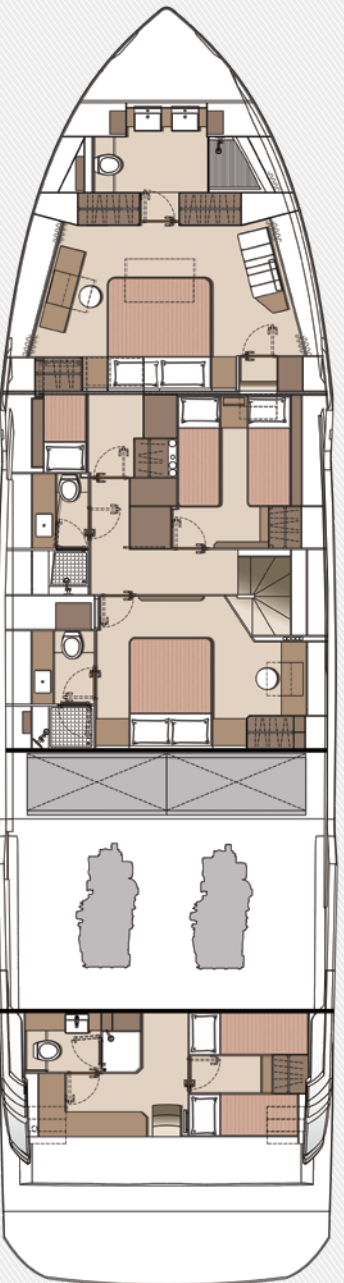
PROFILE:
OPEN BRIDGE



BRIDGE DECK



MAIN DECK



LOWER DECK

FD80

On-Deck Master & Beach Club

OWNERSHIP WITHOUT COMPROMISE.

Designed for ownership without compromise, the FD80 offers four staterooms, including an on-deck master, as well as a fully equipped beach club. The FD Series' signature interior volume is maintained while unique full-height windows augment the openness. Offering multiple configurations such as a fully enclosed or split-use skylounge, the FD80 boasts functional outdoor spaces that rival those found on 90ft-plus motor yachts. Side wingstations allow for improved visibility while docking and the bridge deck aft is spacious enough to accommodate a 16ft tender.





yacht ownership
without compromise



THESE PAGES

Plentiful headroom, large windows and a 22' 6" beam contribute to the spacious interior, which owners can specify with an open or enclosed galley arrangement.





Beach Club



Main Deck Aft

THESE PAGES

The FD80 offers all of the signature elements of a mid-size superyacht, such as spacious accommodations, a fully equipped beach club and vast deck areas.



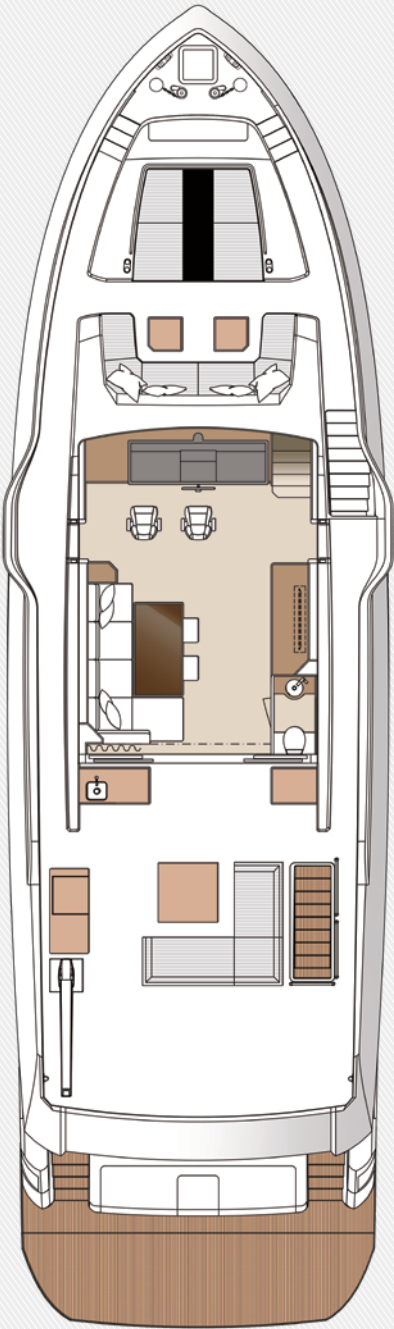
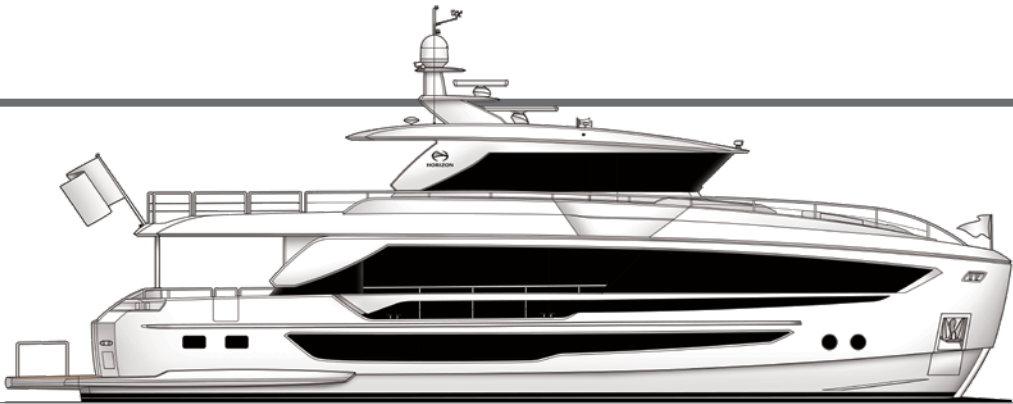
FD80 Specifications and Layout

LOA	80' 7" (24.56m)
LWL	71' 9" (21.87m)
Beam	22' 6" (6.87m)
Draft (half load)	5' 7" (1.7m)
Displacement (half load)	198,410lbs (90 tons)
Fuel Capacity	2,700 US gals (10,220ltrs)
Fresh Water Capacity	400 US gals (1,500ltrs)
Engines	Twin CAT C18A 1,136hp
Generators	Twin Onan 27kW (50Hz) or Twin Onan 29kW (60Hz)

CUSTOMIZATION CAPABILITIES

Aboard the FD80, owners can select an enclosed (Skyline) or split-use skylounge configuration. The interior dining and galley area as well as the foredeck lounging and cocktail area are popular spaces for owner customization.

PROFILE: SKYLINE



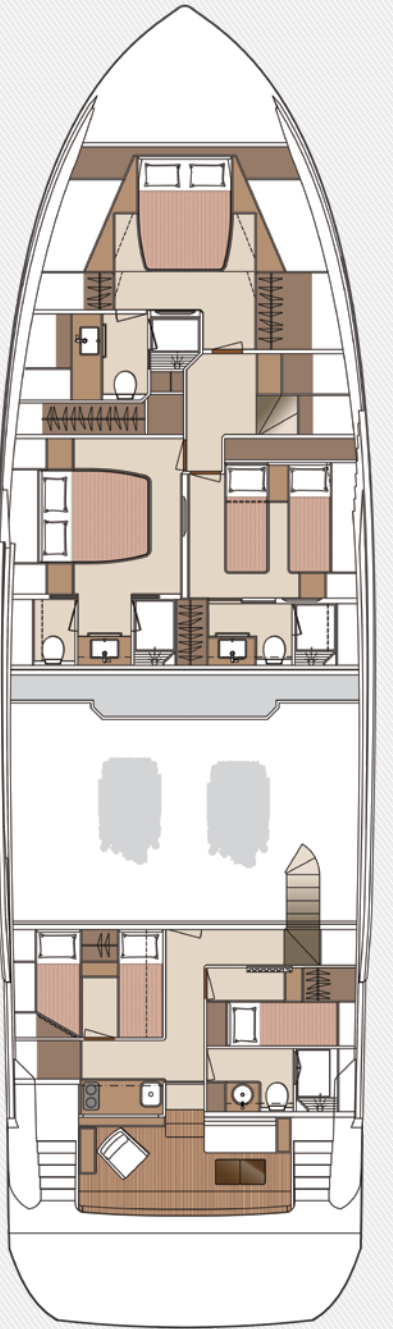
BRIDGE DECK (LAYOUT 1)



BRIDGE DECK (LAYOUT 2)



MAIN DECK



LOWER DECK

FD90

Five Staterooms, Infinite Options

DISRUPTIVE INNOVATION IN ITS MOST BEAUTIFUL FORM.

Marked by contemporary lines, tremendous interior volume, and ingenious functionality, the FD90 sets the benchmark for innovation in yacht design. The most popular model in the FD Series, the FD90 is supported by Horizon's High Performance Piercing Bow and offers the option of a fully equipped beach club as well as five guest staterooms including an on-deck master. Packed with amenities within its 23' 3" beam, this advanced mid-range yacht marries space with style and performance.

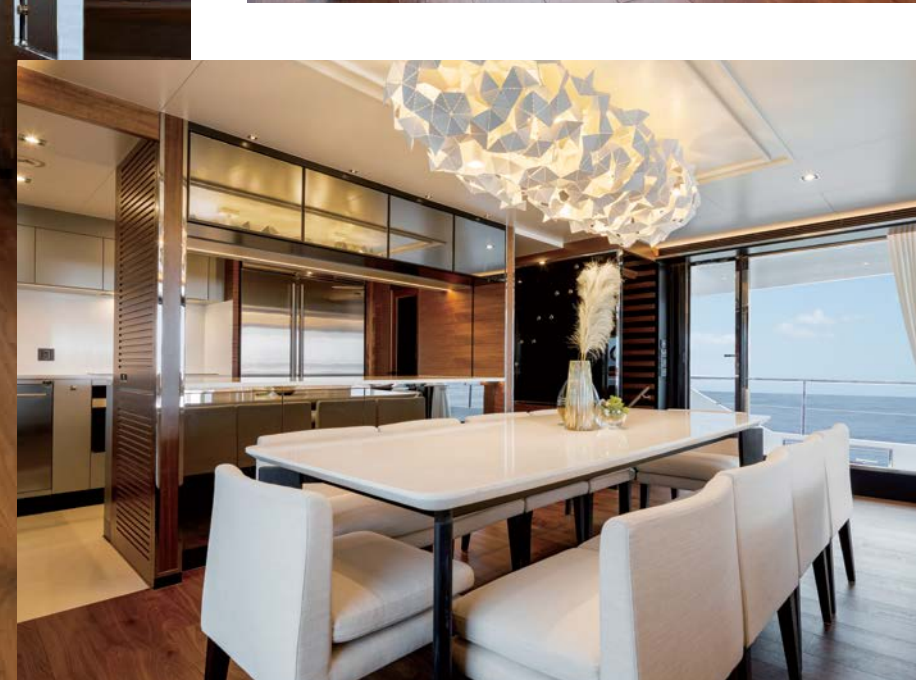




Main Salon

**THESE PAGES**

Within its beamy interior, the FD90 can be customized to suit your style. Areas from the salon to the galley to the staterooms can be outfitted with your selection of wood, stone and finishes.



THESE PAGES

Not only can clients select the wood, stonework, fixtures and finishes that suit their lifestyle, they also have the option of the enclosed or split-use (right) skylounge configuration.



**innovative +
multifunctional**



On-Deck Master



Bridge Deck Aft



**designed for style,
built for cruising**

THESE PAGES

The deck areas
aboard the FD90
provide magnificent
areas for relaxing
and entertaining.



FD90 Specifications and Layout

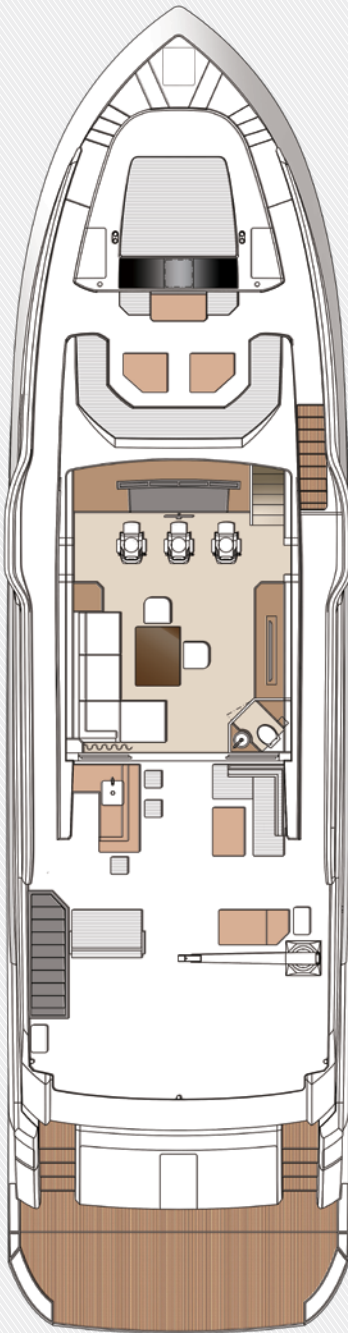
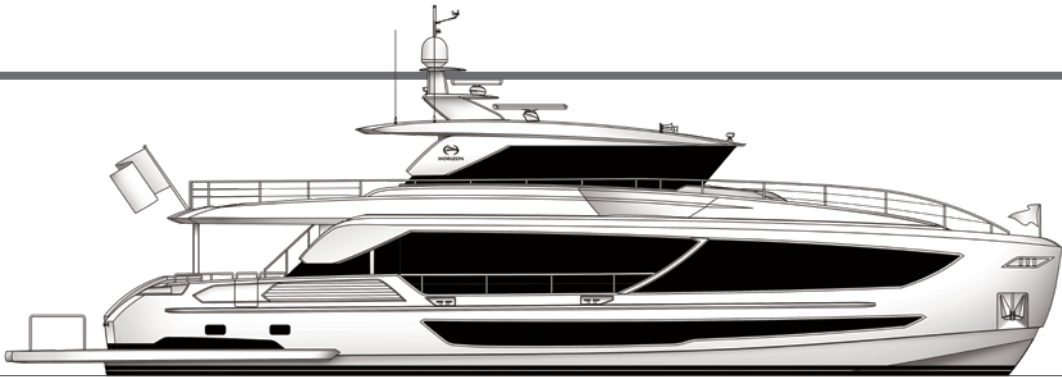
LOA	90' (27.45m)
LWL	81' 4" (24.79m)
Beam	23' 3" (7.11m)
Draft (half load)	6' (1.83m)
Displacement (half load)	229,280lbs (104 tons)
Fuel Capacity	3,480 US gals (13,170ltrs)
Fresh Water Capacity	400 US gals (1,500ltrs)
Engines	Twin CAT C18A 1,136hp
Generators	Twin Onan 27kW (50Hz) or Twin Onan 29kW (60Hz)

CUSTOMIZATION CAPABILITIES

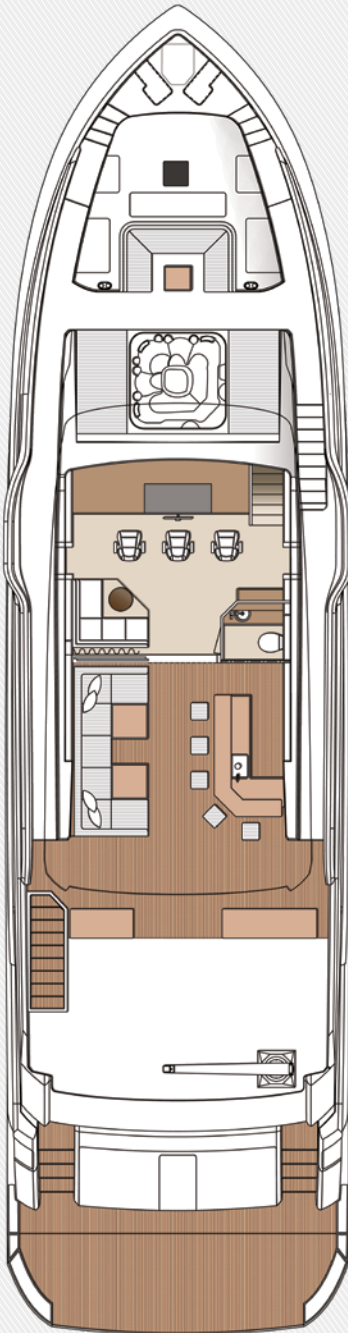
The opportunities for customization aboard the FD90 are limited only by the imagination. Owners can specify an enclosed or split-use skylounge configuration, their stateroom layouts, crew quarters and beach club and swim platform arrangement.

The large foredeck area is a popular space for incorporating storage, refrigeration and shaded sunpads for even more al fresco dining and relaxation opportunities.

PROFILE:
SKYLINE



BRIDGE DECK
(LAYOUT 1)



BRIDGE DECK
(LAYOUT 2)



MAIN DECK



LOWER DECK

FD 100

Innovation on Every Level

A DESIGN EVOLUTION.

Available in a Skyline or Tri-Deck version, the FD100 offers five staterooms, including a full-beam master suite on the main deck. The Tri-Deck layout option offers a lightweight open flybridge equipped with a helm and seating area atop the bridge deck, which features a forward wheelhouse, interior skylounge with dayhead and bar and jacuzzi aft.

The Skyline configuration offers a large wheelhouse with enclosed skylounge aft along with ample deck space for entertaining. The FD100 is designed with spacious crew quarters for four aft as well as a fully equipped beach club.





THESE PAGES
Amenities abound on the FD100, from the built-in device charging stations in the main salon (right) to the convertible dining table (above).



On-Deck Master

THIS PAGE
The lower deck foyer is equipped with a mini bar to serve the three queen and convertible twin staterooms.



multiple levels
of innovation



Bridge Deck Aft



Tri-Deck



Foredeck

THESE PAGES
The ethos of the tri-deck design is to afford plenty of deck areas. From the foredeck to the aft deck, the FD100 is outfitted with superyacht amenities.



Main Deck Aft

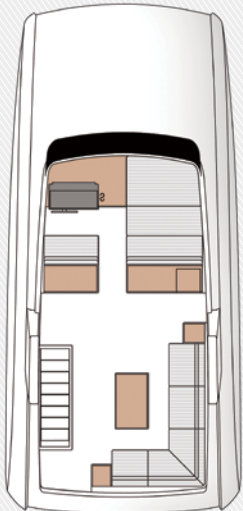
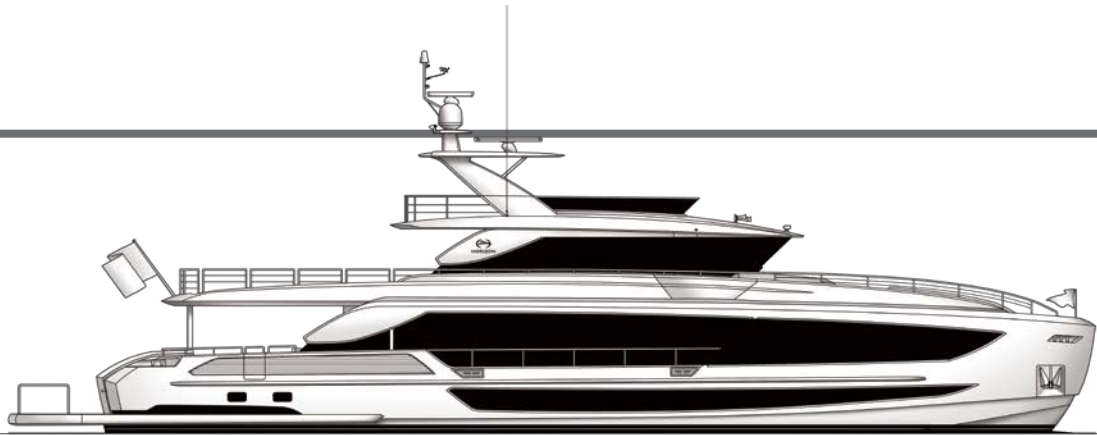
FD100 Tri-Deck *Specifications and Layout*

LOA	101' 6" (30.94m)
LWL	91' 4" (27.85m)
Beam	23' 4" (7.11m)
Draft (half load)	6' 3" (1.91m)
Displacement (half load)	282,190lbs (128 tons)
Fuel Capacity	4,000 US gals (15,140ltrs)
Fresh Water Capacity	400 US gals (1,500ltrs)
Engines	Twin CAT C32A 1,600hp
Generators	Twin Onan 40kW (50Hz) or Twin Onan 40kW (60Hz)

CUSTOMIZATION CAPABILITIES

The FD100 Tri-Deck is a customization in and of itself, having been born from the drawings of an FD90 and customized with a third upper deck, which can be fitted with a helm station.

PROFILE:
TRI-DECK



TRI-DECK



BRIDGE DECK



MAIN DECK



LOWER DECK

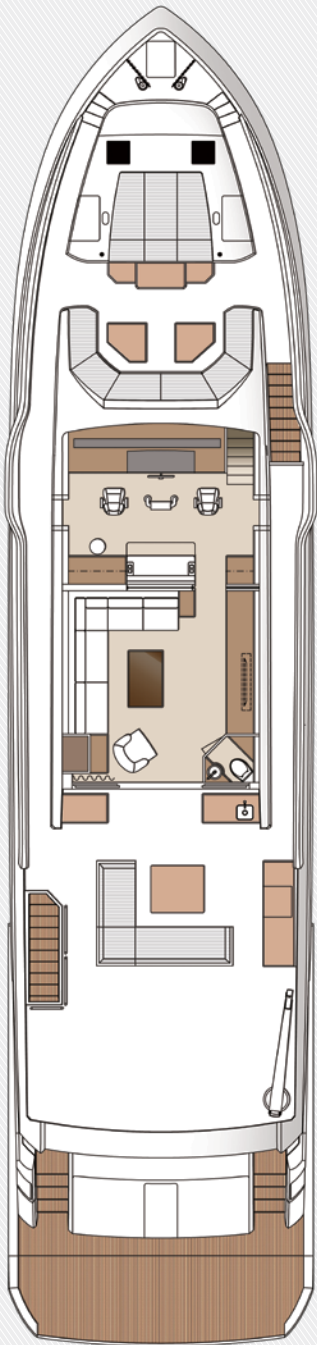
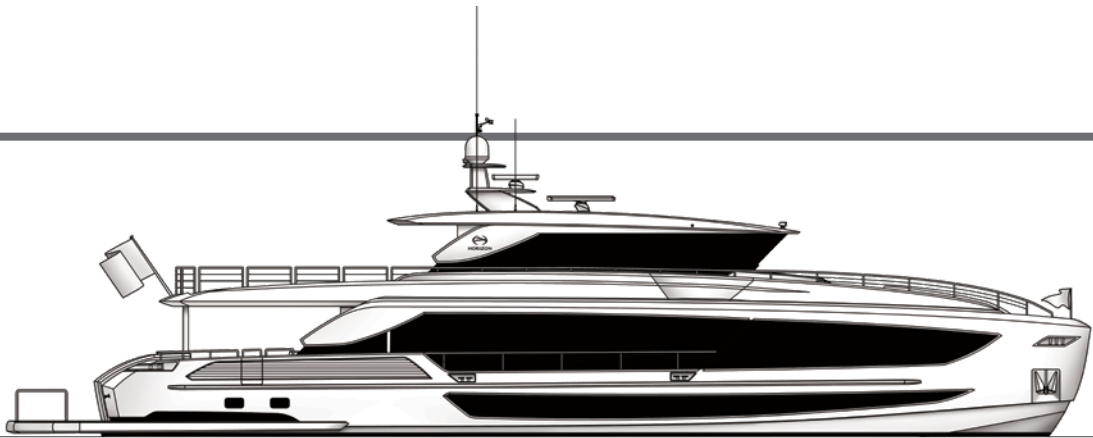
FD100 Skyline Specifications and Layout

LOA	101' 6" (30.96m)
LWL	92' 2" (28.11m)
Beam	23' 4" (7.11m)
Draft (half load)	5' 9" (1.76m)
Displacement (half load)	273,370lbs (124 tons)
Fuel Capacity	4,000 US gals (15,140ltrs)
Fresh Water Capacity	400 US gals (1,500ltrs)
Engines	Twin CAT C32A 1,600hp
Generators	Twin Onan 40kW (50Hz) or Twin Onan 40kW (60Hz)

CUSTOMIZATION CAPABILITIES

The FD100 Skyline configuration offers a large wheelhouse with an enclosed skylounge aft along with ample deck space for entertaining. The FD100 is designed with spacious crew quarters for four aft as well as a fully equipped beach club.

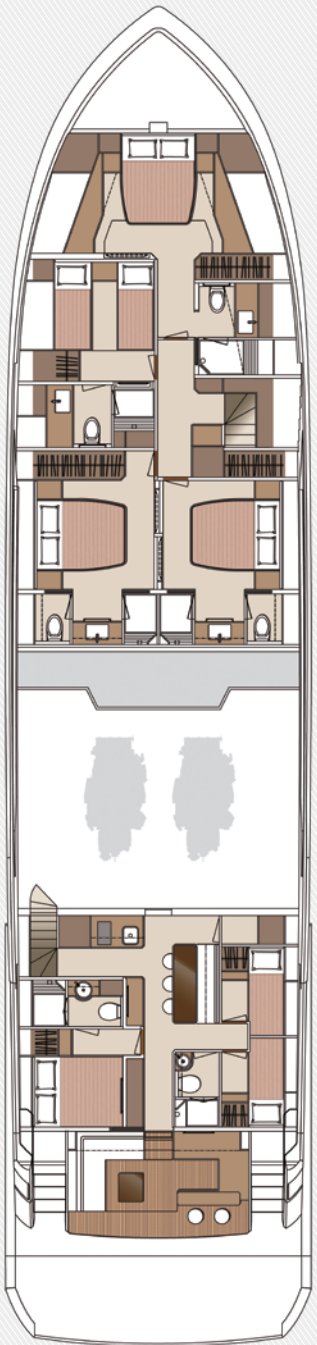
PROFILE:
SKYLINE



BRIDGE DECK



MAIN DECK



LOWER DECK

FD 110

Volume, Views, Versatility

THE NEXT-GENERATION SUPERYACHT.

The Horizon FD110 represents the next generation of luxury superyachts with stylish exterior lines, impressive interior volume and large outdoor spaces. This five-stateroom yacht features an on-deck deluxe master stateroom and plentiful dining and entertaining areas throughout. Offered in a Tri-Deck or Skyline configuration, the FD110 comfortably accommodates a crew of six in forward crew quarters with a large, fully equipped beach club aft.





Main Salon

THESE PAGES

Augmented by the generous volume that defines the Series, the FD110 is further enhanced by large windows and luxurious finishes.



Wheelhouse



superyacht finishes, design efficiency





THESE PAGES

Space and light feature prominently aboard, from the master stateroom and en suite to the lower deck guest accommodations.





Split-Use Skylounge



Main Deck Aft

THESE PAGES
The exterior
spaces can
be customized
to suit the
owner's lifestyle.





THESE PAGES

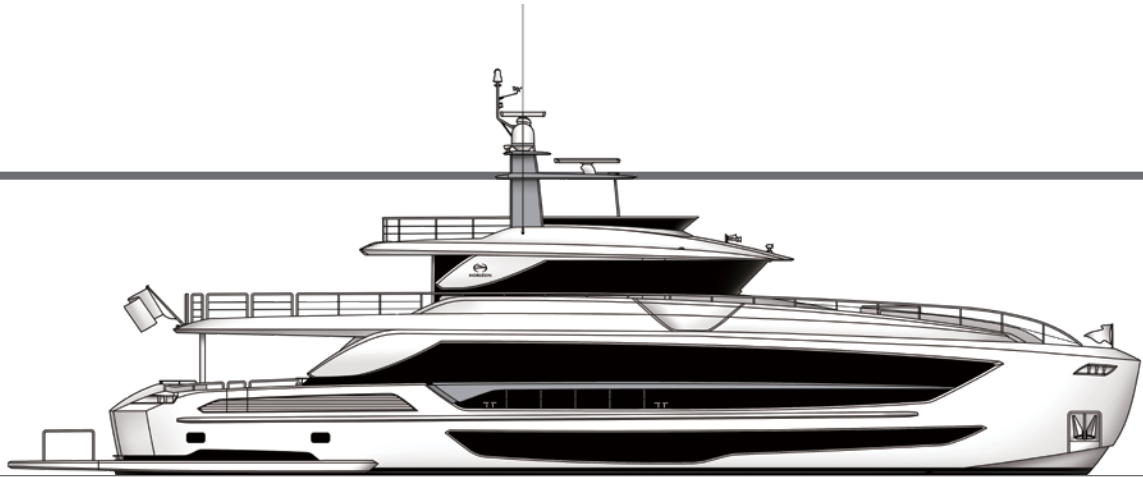
The Tri-Deck FD110 provides yet another exceptional exterior area for al fresco relaxation amidst the panoramic views.



FD110 Tri-Deck *Specifications and Layout*

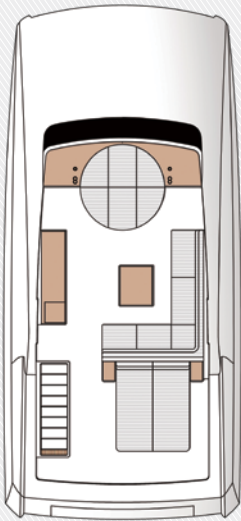
LOA	111' 6" (33.99m)
LWL	99' 1" (30.21m)
Beam	24' 6" (7.47m)
Draft (half load)	5' 11" (1.82m)
Displacement (half load)	348,330lbs (158 tons)
Fuel Capacity	4,500 US gals (17,030ltrs)
Fresh Water Capacity	800 US gals (3,025ltrs)
Engines	Twin CAT C32A 1,600hp
Generators	Twin Onan 50kW (50Hz) or Twin Onan 55kW (60Hz)

PROFILE:
TRI-DECK



CUSTOMIZATION CAPABILITIES

Each owner is invited to visit Horizon's state-of-the-art facilities in Taiwan during the build process. Here, the owner will meet with engineering and design teams to customize the yacht to suit the vision. Every request is analyzed and engineered to ensure stability, safety and performance are maintained.



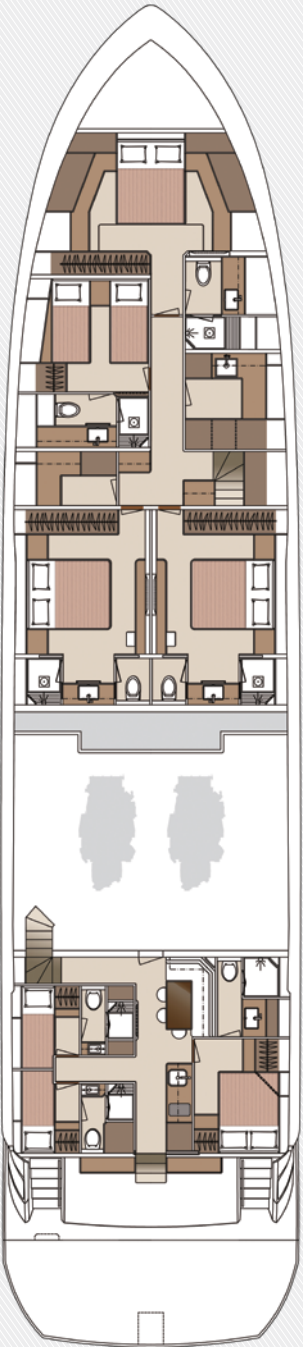
TRI-DECK



BRIDGE DECK



MAIN DECK



LOWER DECK

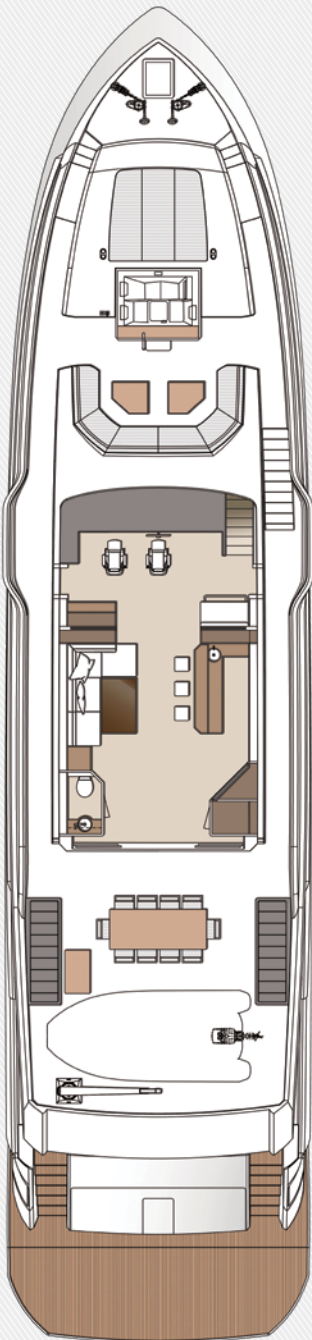
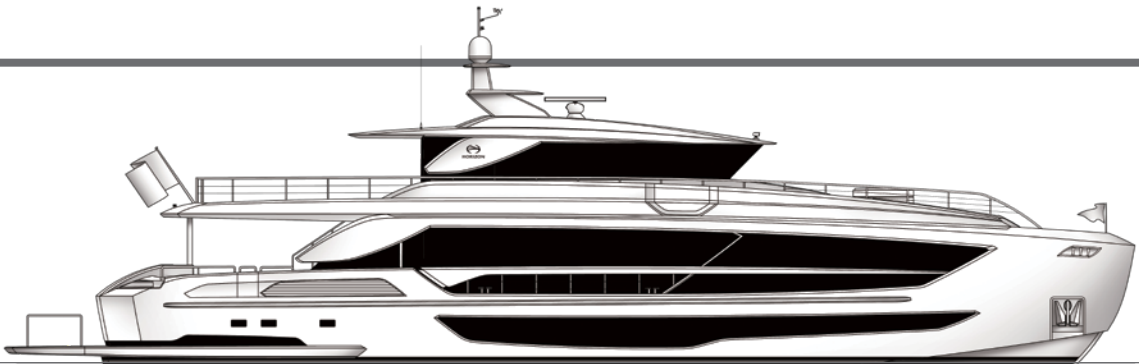
FD110 Skyline Specifications and Layout

LOA	111' 6" (33.99m)
LWL	101' 8" (31m)
Beam	24' 6" (7.47m)
Draft (half load)	5' 9" (1.76m)
Displacement (half load)	328,490lbs (149 tons)
Fuel Capacity	4,500 US gals (17,030ltrs)
Fresh Water Capacity	800 US gals (3,025ltrs)
Engines	Twin CAT C32A 1,600hp
Generators	Twin Onan 50kW (50Hz) or Twin Onan 55kW (60Hz)

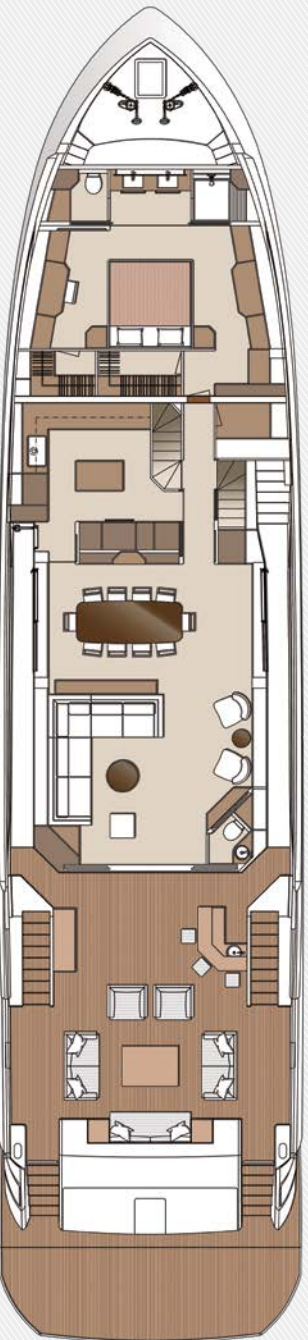
CUSTOMIZATION CAPABILITIES

At the superyacht level, Horizon is able to accommodate greater customizations. From forward crew quarters to formal dining aft, to the installation of customer-specified equipment, Horizon will design and engineer to suit client preference.

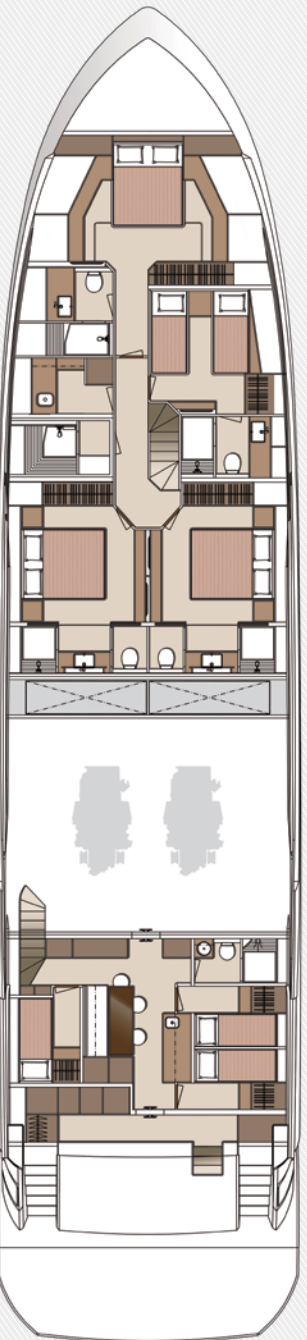
PROFILE:
SKYLINE



BRIDGE DECK



MAIN DECK



LOWER DECK

FD125

Luxury, Space, Sophistication

DARING TO BE BOLDER.

The largest concept offered in the acclaimed FD Series, the FD125 makes an elegant entrance, with her head-turning superyacht styling matched by superb performance and stability beneath the waterline. The FD125 incorporates double salons, a spacious galley, five staterooms including an on-deck master, and accommodations for eight crew.







On-Deck Master

elegance + performance



THESE PAGES

The FD125 superyacht features a sophisticated interior exuding luxury and style. The five-stateroom layout is paired with exterior deck options and stability and comfort below the waterline.



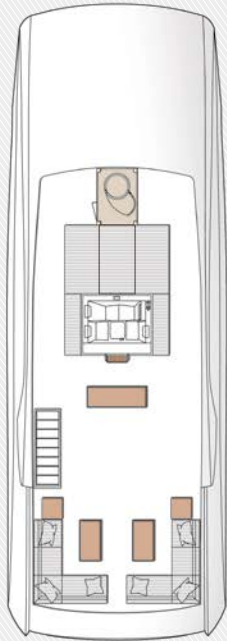
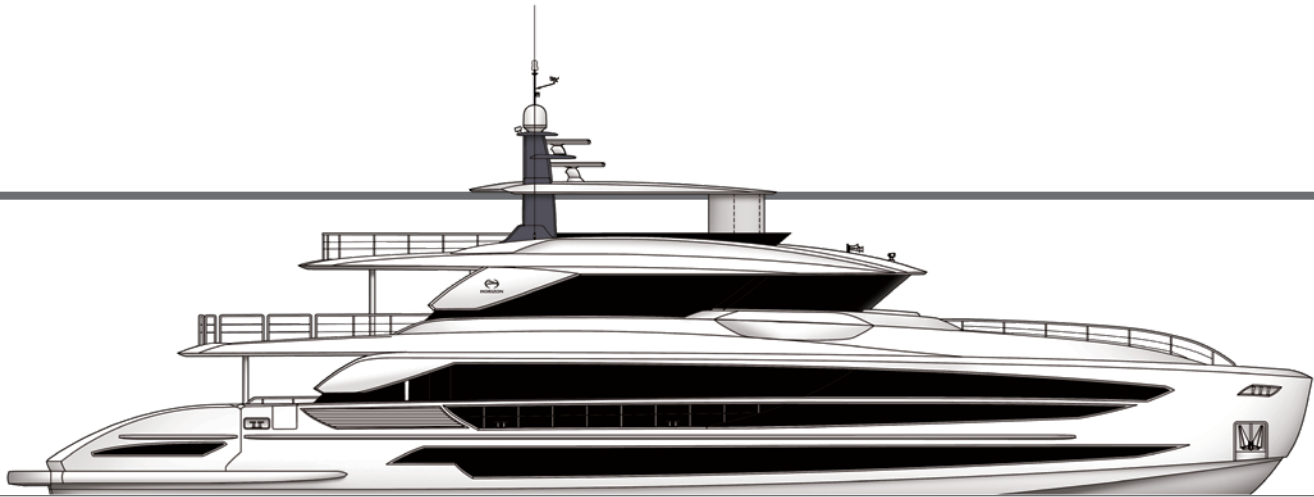
FD125 Specifications and Layout

LOA	125' (38.1m)
LWL	114' 9" (35m)
Beam	26' 11" (8.2m)
Draft (half load)	7' (2.13m)
Displacement (half load)	462,970lbs (210 tons)
Fuel Capacity	8,000 US gals (30,280ltrs)
Fresh Water Capacity	800 US gals (3,025ltrs)
Engines	Twin CAT C32A 1,800hp
Generators	Twin Onan 65kW (50Hz) or Twin Onan 65kW (60Hz)

CUSTOMIZATION CAPABILITIES

The FD125 is a fully custom build, which allows owners to capitalize on the engineering and proven performance of Horizon’s proprietary High Performance Piercing Bow and hull design as well as the voluminous and bright interior spaces that define the FD Series.

PROFILE:
TRI-DECK



TRI-DECK



BRIDGE DECK



MAIN DECK



LOWER DECK

*Our Owners Don't Chase Dreams,
They Define Them*

PUSHING THE ENVELOPE.

For more than 35 years, Horizon has pioneered the design
and build of exceptional motoryachts for discerning owners.

Leaders in advanced composite technologies and naval
architecture, Horizon sets the standards for innovation
so our owners can confidently define their dreams.

ASSOCIATIONS



AWARDS



All GAs, layouts and specifications shown represent actual builds and designs at the time
of publication but are subject to change without notice.



DEFINE YOUR HORIZON

