

HORIZON

World Class Yachts

*DESIGNED TO ENTERTAIN
THE NEW HORIZON FD87 NEA MONI V
FAST DISPLACEMENT MOTORYACHT*



創意無限 · 歡樂至上

HORIZON FD87 NEA MONI V

實力演繹自我風格



PRESIDENT'S NOTE

A new year has begun and we have high expectations for 2019. Horizon Group's global sales turnover has been growing for three consecutive years since 2016, and 2018 was our busiest and most successful sales year following the 2008 financial tsunami. Sales in 2019 are expected to surpass 2018's, which will be a record for our company. This positive growth is testament not only to Horizon Group's strength during an uncertain economy, but also confirms our continuous trend of growth and progress. As we look forward to the future, we also reflect on the past year and highlight a few of the many accomplishments we shared with our clients in 2018.

- In addition to the U.S., Horizon saw strong sales growth in Australia, Japan and Europe in 2018. The European market alone has accounted for nearly \$30 million dollars worth of new yacht orders in the last two years; the strongest response from that market in a decade.

- The introduction of the Horizon Fast Displacement Motoryacht Series has seen unprecedented success. Innovative design and technology distinguishes this series from the competition and has attracted attention—and orders—from the global market. In the three years since the introduction of the first FD85 Fast Displacement motoryacht, we have sold 11 FD series yachts, including nine FD85/87 models and two FD102s. The number of FD yachts delivered in 2018 alone proves that we are on the right track with our focus on innovative products.

- Following the popular FD85 and FD87 models, Horizon continued to develop the FD Series in 2018 and saw the new FD77 and FD102 models in construction at the end of the year. A new FD70 is ready for tooling and scheduled to launch in January 2020, while the next new model—the FD125—is currently in the planning and design stage, and will be unveiled in the near future.

- In 2018, Horizon saw the strongest growth in employees since its establishment and now every department—from development to design, construction to sales—is staffed with experienced and professional personnel and crew. Horizon's dedication to "prompt delivery" and "custom-made" yachts have long been admired and recognized by our clients, and continue to be our unrivaled strengths.

- Horizon Group's strong financial structure, coupled with the brand awareness that has grown in recent years, has provided the biggest support for our dual business models of "build on spec" and "build to order," enabling us to achieve great results in 2018. In 2019 we will continue to use invest our own funds in the efficient build and introduction of yacht models to markets worldwide.

Mastering market trends, exploring possibilities, daring to challenge and pursuing excellence have long been Horizon's main focus and strength. Although the global economic environment can always change, we remain confident in the future and believe that 2019 will be a fruitful year for us as well as for our clients.

執行長的話

新的一年到來！對於 2019 我們有很高的期許，因為嘉鴻遊艇集團全球銷售營業額自 2016 起已連續三年正成長，2018 年更是集團自金融海嘯以來最忙碌，也是成果最豐碩的一年。展望 2019 更有可能超越 2018，甚至一舉創下歷史的高峰。這說明嘉鴻遊艇集團是一間可以在逆勢中求發展的船廠，同時也確定未來公司穩定成長的趨勢不變。我們在展望未來的同時，也一併檢視過去一整年的發展概況，並與大家做一個分享。

· 2018 嘉鴻全球銷售市場分布廣闊，除了美國有很好的銷售成績外，澳洲、日本及歐洲也穩定成長，並持續獲得新訂單。尤其，歐洲市場這二年就有將近 3000 萬美金的訂單，更是過去 10 年來最好的成績。

· 全新 Horizon FD 快速巡航遊艇系列的開發，獲致空前的成功。創新的設計理念領先所有的競爭者，不但受到全球市場的矚目，也反映在實質的訂單上。自 2016 年 3 月首次公開展出第一艘快速巡航遊艇 FD85 至今不到三年時間，已經賣出 11 艘 FD 系列遊艇，包含九艘 FD85/87 及二艘 FD102 巨型遊艇。2018 年的交貨成績，證明我們大膽嘗試的新產品正走在一條正確的道路。

· 乘勝追擊，以 FD85/87 為核心所發展出來的一系列 FD 遊艇，包括 FD102 及 FD77，到 2018 年底都已經開模完成並且開始生產。有相同設計理念的 FD70，也準備進入開模階段，並預計 2020 年元月即可下水。還有 FD125 目前也在規劃設計階段，相信很快就能在市場上跟大家見面。

· 2018 是嘉鴻遊艇自開廠以來陣容最堅強的一年。人力的建制從開發、設計、建造到銷售的各相關單位，人員齊全並且經驗豐富。嘉鴻所擁有的「快速」與「量身訂製」的能力，也一再獲得客戶的肯定，並已成為嘉鴻遊艇無可匹敵的強大力量。

· 集團強大的財務能力，加上過去多年努力耕耘的品牌力，讓嘉鴻遊艇「先建後售」與「接單生產」並行的生意模式，獲得良好的成效，並在 2018 年締造業務佳績。今年起船廠將更無後顧之憂地運用自有資金，將新產品快速的推廣到市場上，增加市場銷售速度並擴大營業額。

掌握市場動態、多方探索、勇於挑戰、追求卓越以累積嘉鴻強大的力量，一直是我們努力的方向。雖然全球經濟環境詭譎多變，但我們對未來仍充滿信心，相信 2019 會是更好的一年。



John Lu
CEO of Horizon Group

Define Your

HORIZON

VOL 48 / WINTER / 2018

目錄
TABLE OF
CONTENTS

4



Designed to Entertain:
The New Horizon FD87 *NEA MONI V*
Fast Displacement Motoryacht
創意無限・歡樂至上
Horizon FD87 *NEA MONI V*
實力演繹自我風格



The Cross-Industry Application
of Aerospace Technology (II)
Atech Incorporates Optical 3D
Coordinate Measuring System to Ensure
Precision in Yacht Molds
航太技術之跨領域應用(二)
先進複材利用光學式 3D 量測系統
掌握船艇模具精度



FD102 Skyline Hull One on
Schedule to Deliver in 2020
第一艘 FD102 Skyline
將於 2020 年如期交運

FEATURE



On the Cover

Designed to Entertain
The New Horizon FD87 *NEA MONI V*
Fast Displacement Motoryacht

創意無限・歡樂至上
HORIZON FD87 *NEA MONI V*
實力演繹自我風格

EDITORIAL BOARD

發行 嘉鴻遊艇集團
製作 嘉鴻遊艇集團行銷中心
主編 呂佳揚
編輯 黃曉芳、利佩容、劉麗珠、張靖民
翻譯 吳美真、Elise Moffitt
美編 楊心綺

Publisher Horizon Group
Coordinator Horizon Group Marketing Center
Editor-in-Chief John Lu
Editor Michelle Huang, Lily Li, Josette Liu, Celeste Chang
Vincee Wu, Elise Moffitt
Art Editor Lisa Yang

General Inquiry info@horizonyacht.com
PR Inquiry marketingcenter@horizonyacht.com

WWW.HORIZONYACHT.COM
8 Kuang Yang St. Hsiao Kang,
Kaohsiung, 81257 TAIWAN



38

The New Horizon PC65 Power Catamaran, *POMBOO*
Horizon's first PC65 Power Catamaran is her owner's third PC Series yacht
HORIZON PC65 *POMBOO* 海豚號
嘉鴻第一艘 PC65 雙體遊艇；
船主的第三艘 PC 系列遊艇



54

You Dream, We Deliver
你的夢想遊艇 ·
交給 Horizon 建構成真



66

Classic New England Fun at the 2018 Horizon Yachts Owner Rendezvous in Newport, Rhode Island
2018 HORIZON 船主聚會
洋溢經典新英格蘭風情
美國 · 羅德島 · 紐波特

5

JUST LAUNCHED 新船報導	TECH TALK 技術聚焦	YACHT NEWS 遊艇動態	DEPARTMENT
<p>6 Designed to Entertain: The New Horizon FD87 <i>NEA MONI V</i> Fast Displacement Motoryacht 創意無限 · 歡樂至上 Horizon FD87 <i>NEA MONI V</i> 實力演繹自我風格</p>	<p>22 The Cross-Industry Application of Aerospace Technology (II) Atech Incorporates Optical 3D Coordinate Measuring System to Ensure Precision in Yacht Molds 航太技術之跨領域應用 (二) 先進複材利用光學式 3D 量測系統掌握船艇模具精度</p>	<p>30 FD102 Skyline Hull One on Schedule to Deliver in 2020 第一艘 FD102 Skyline 將於 2020 年如期交運</p>	
FEATURE BOAT 遊艇鑑賞	SPOT LIGHT 新聞亮點	IN FOCUS 專題特寫	
<p>38 The New Horizon PC65 Power Catamaran, <i>POMBOO</i> Horizon's first PC65 Power Catamaran is her owner's third PC Series yacht HORIZON PC65 <i>POMBOO</i> 海豚號 嘉鴻第一艘 PC65 雙體遊艇； 船主的第三艘 PC 系列遊艇</p>	<p>48 The Busy Season: Six Horizon Yachts Await Delivery to Owners Worldwide 豐收的季節：六艘全新 Horizon 遊艇 已完工準備交付全球船主</p> <p>52 Horizon Yachts and the Horizon FD87 Skyline Honored with Fourth Taiwan Excellence Gold Award 嘉鴻遊艇以 Horizon FD87 Skyline 船型 榮獲第四座台灣精品金質獎</p>	<p>54 You Dream, We Deliver 你的夢想遊艇 · 交給 Horizon 建構成真</p>	
FEATURE EVENT 主題活動	BOAT SHOW 船展花絮	HORIZON CORNER 嘉鴻專區	
<p>66 Classic New England Fun at the 2018 Horizon Yachts Owner Rendezvous in Newport, Rhode Island 2018 HORIZON 船主聚會 洋溢經典新英格蘭風情</p>	<p>84 A Showcase of Versatility Horizon Stands Out at the 2018 Fort Lauderdale International Boat Show 多款船型展現多樣魅力 HORIZON 遊艇在 2018 羅德岱堡國際遊艇展脫穎而出</p>	<p>92 Your Dream Yacht is Waiting 即刻擁有 — HORIZON 精選現船</p>	
COMING EVENT 最新活動			
<p>94 Horizon FD87 Skyline, FD77, E88, V68 & PC Series at the 2019 Palm Beach International Boat Show 嘉鴻遊艇集團將在 2019 美國棕櫚灘船展展出多艘 HORIZON 遊艇 - FD87 Skyline · FD77 · E88 · V68 及 PC 系列</p>			

新船報導
JUST
LAUNCHED

6

DESIGNED TO ENTERTAIN
THE NEW HORIZON FD87 *NEA MONI V*
FAST DISPLACEMENT MOTORYACHT

創意無限，歡樂至上

HORIZON FD87 *NEA MONI V*

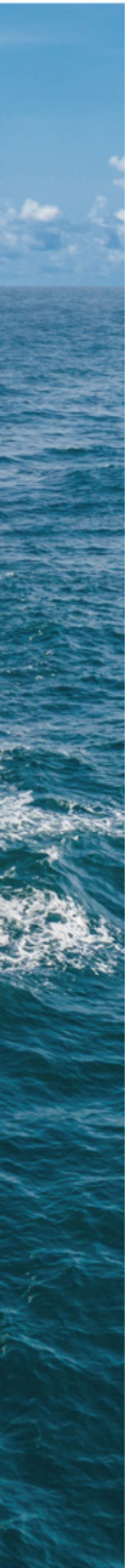
實力演繹自我風格



新船報導
JUST
LAUNCHED

8





NEA *MONI V*, the third Horizon FD motoryacht to be delivered to Europe, is the first Horizon FD87 designed with a unique walkaround deck that brings multiple exterior entertainment options to the bridge deck level.

Named in honor of the owner's family origins, the *NEA MONI V* is a unique yacht with uncompromising style, distinguished by a stone grey hull with a light gold boot stripe. This new FD87 is built with floating floors throughout for additional sound attenuation, and glass windows on either side of the lower deck follow the boot stripe to the crew cabins aft. Teak decking highlights the spacious exterior areas, and the anchor system has been changed to a pocket anchor to maintain a flat foredeck and allow for extra chain storage.

NEA MONI V's interior is fitted with soft goods and high-tech fabrics in neutral tones, while custom bedding with teal accents in the staterooms provides color vibrancy throughout.

NEA *MONI V* 是嘉鴻遊艇集團銷往歐洲的第 3 艘 Horizon FD 船型，也是第一艘擁有獨特望台外部環繞走道設計的 Horizon FD87 快速巡航型遊艇。其多功能的戶外休閒娛樂規劃與創意設計，提供船主無限歡樂的海上遨遊體驗。

這艘為紀念家族起源地而命名為 *NEA MONI V* 的豪華遊艇，是根據船主用船需求及個人風格與品味所客製的具有獨特魅力的個性遊艇，不僅擁有沉穩的金蔥鐵灰色船身，在水線上還有一條宛如腰帶的淡金色塗裝，成為與眾不同的醒目標誌。另外，全船皆改做浮動地板並加強隔音效果，而其兩舷側玻璃也特地加長以增加後艙水手區的採光需求。外部則皆為柚木甲板，錨鍊系統也從直出式單錨改成內凹錨袋樣式，而隱藏式的錨道設計也讓前甲板變平整，既美觀又不影響動線。

在內裝上，*NEA MONI V* 大量使用大地色系軟件並運用一些防污耐髒的科技布料做內飾，而特製的湖綠色織帶寢俱除增加室內活潑性，也成為連結各艙間的共同符號。



Main Salon

Characterized by large sections of floor-to-ceiling windows and fitted with dark Wenge wood and vinyl paneling with contrasted strips inlay, the main salon conveys a zen-like atmosphere. An L-shaped sofa and armchair accompany the high-end audio/visual entertainment system that includes a wall-mounted, 55" television. A freestanding display cabinet next to the A/V closet serves the dual purpose as a mini bar. Sliding glass doors to port and starboard provide convenient access to and from the side decks, yet another considerate design feature.

Formal Dining Area & Galley

Adjacent to the salon, the formal dining area offers panoramic views and houses a custom table for ten featuring a handcrafted tempered glass table top in smoke grey perched atop a stainless steel table stand. Highlighting this stylish area is a wall covering of grooved lacquered fawn vinyl that features a concave display cabinet with storage behind. The fully equipped galley forward enjoys large, sweeping windows that include a porthole for fresh air and is designed with an additional door to port for crew access without interrupting guests in the salon and dining area.



主沙龍

室內以深色消光鐵刀木搭配烤漆線條與皮革裱板，塑造內斂沉穩氣質，而樓梯扶手則運用不鏽鋼方管加細圓管，做平行線性分割，與室內牆面相互呼應。動線設計的重點在於讓賓主流暢平行移動於主甲板層，因此除了沙龍大門外，還在左右兩舷設置滑門。而生活休閒是此區重要功能，因此除了舒適沙發座椅，還配備高端影音娛樂系統，並在影音櫃旁設計活動展示櫃，除可增加收納功能還能靈活運用成為調酒的迷你吧檯，而 55 吋電視則隱藏在右舷後方牆面。另外，右舷後方還設計一間出入口由室外進入，與沙龍區隔的洗手間，此設計貼心的考量到使用者的隱私性與舒適性。



正式用餐區與廚房

正式用餐區與沙龍毗鄰，設置有 10 人座餐桌，桌面使用手工灰色水紋窯燒玻璃並結合不鏽鋼桌架的客製化設計，為日常餐聚與社交宴會增添時尚氛圍。牆面則採內凹式端景牆設計，以米白皮革與烤漆線條增添細緻層次，而牆後則有隱藏式收納櫃增加儲物功能。明亮的廚房則位在用餐區前方，而且還增設一個獨立出入口在左側走道，方便讓廚房工作人員進出而不影響沙龍及餐區的賓客。另外，廚房窗戶玻璃也特別增加可開式小圓窗，以利空氣流通。



Master Stateroom



The on-deck master stateroom is truly a luxurious retreat, featuring a king-size bed and a starboard-side love seat beneath extra-wide windows fitted with double-layer electric blinds. A well-planned forward ensuite fitted in Statuario Venato marble features separate toilet and shower areas as well as floating cabinets with dual basins, and is hidden behind a sliding door in stripe textured bronze glass with inlaid marble handles. A walk-in closet to starboard and plenty of storage further augment this space.

Guest Stateroom & Crew Quarters

The four ensuite staterooms below deck are highlighted by dark Wenge wood and fawn vinyl paneling that continues the yacht's calm and comfortable atmosphere. The spaciousness of the forward VIP is enhanced by tawny mirrors and built-in cabinetry with plenty of storage. Amidships, two mirrored VIP staterooms feature separate toilets and showers while the twin stateroom to starboard can be converted to a double. Each bathroom features heated floors, heated towel racks, and rain showers. Near the engine room, the ample and bright crew area accommodates four crew members in two bunk cabins and includes a well-planned crew mess for cooking, working and relaxation.



主人房

位在主甲板層的船主休憩空間，延續沙龍風格，以米白色皮革牆面營造淡雅氛圍，而近 10 英尺的超寬窗戶面積，則讓船主不論在舒適大床午睡還是在右舷雙人沙發閱讀，都能感受大自然帶來的清新舒暢。另外，羅馬紗與電動蛇型簾，既可依船主需求調整採光也能兼顧隱私，而雙層窗簾的設計則增加軟件搭配的層次感以及光影的變化，為室內增添浪漫氣氛。豪華衛浴設施則規劃在最前方，以鑲嵌玉石門把的隱藏式精彫玻璃拉門與休憩空間區隔開，而旁邊右舷的走入式更衣間是為女主人規劃的貼心設計。



13

客艙房

位在下層甲板的四間含獨立衛浴的貴賓艙房皆延續主甲板風格，以深色消光鐵刀木與米白皮革為主色調，營造尊榮舒適的休憩環境。船艙的貴賓房利用床頭茶色鏡子創造寬敞的視覺感，而妥善利用空間規畫的收納櫥櫃則設計在兩側；2 間對稱的貴賓房位在船艙位置，皆有乾濕分離浴室；右客房的兩張單人床，則可依實際需求合併成一張雙人床使用。所有艙房浴室都配備電熱地板、電熱毛巾架跟頂噴花灑。

後艙船員區

船員水手在後艙有獨立的明亮活動休憩區，包括一個規劃成複合式工作區域的船員大廳，可供船員在此進行簡單烹飪或進行設備維修或保養，以及兩間供 4 位船員居住的水手房。



Pilothouse/Skylounge

The unique design feature of *NEA MONI V* is an island skylounge surrounded by a walkaround deck, which not only brings privacy to the interior but also provides a seamless transition between the exterior entertaining areas. The skylounge is separated from the state-of-the-art pilothouse by a sliding door hidden within built-in bookshelves. The pilothouse offers excellent visibility set off by an elegant dark Wenge and charcoal vinyl console housing a Raymarine navigation system. Aft, the salon incorporates a hi/lo television, desk and L-shaped settee to starboard and is an ideal retreat for private meetings or social activities.

Aft Bridge Deck

The aft bridge deck is spacious enough to store a tender or accommodate freestanding lounge chairs and create a breezy alfresco area shaded by an awning when the tender is launched. Forward, under the extended hardtop, an L-shaped settee is positioned opposite a bar area equipped with a refrigerator, icemaker, sink and four stools. The spacious outdoor recreation area connects to the skylounge and extends to the forward deck.





15



包覆式望台 Skylounge

NEA MONI V 的最大特色就是有一個獨特的望台外部環繞走道設計，將 Skylounge 圍成島型，讓室內活動者既保有隱私也能與戶外連動，而 Skylounge 內則規劃有駕駛室和望台沙龍，採天花板挑高設計，且可用書櫃後的隱藏式拉門區隔開這兩個不同功能區域。駕駛室以鐵刀木與咖啡色皮革表現沉穩氣質，而全套 Raymarine 電子航儀及碳纖維面板的極簡儀表造型則展現專業風格。後方的沙龍則是一個可以獨立且兼具休閒娛樂與會議功能的複合空間。

戶外船橋甲板區

在延伸的戶外頂棚下，有一個搭配 4 人座椅的吧檯規劃在右舷，並配置水槽、冰箱、製冰機，而左舷則有 L 型休閒沙發。後方露天區域則設置一個小艇吊桿及三張休閒躺椅並備有遮陽棚供必要時使用。此區完善的戶外休閒娛樂設施與同時連通室內 skylounge 與前甲板區的規劃，是賓主在 *NEA MONI V* 上從事社交娛樂的理想地點。

Forward Deck

Fitted with large sunpads and a U-shaped settee accommodating 12, the forward deck is another ideal spot for enjoying alfresco activities and rounds out the multi-functional outdoor entertaining platform that is the bridge deck. The sunpads feature storage underneath and drawer refrigerators for refreshment are situated to either side along with a small sink to port. The spare awning can be housed in a built-in seat and installed when desired.

Aft Deck

A spacious aft deck offers panoramic views as well as an inviting seating area for 10-15 people, including a parquet teak table and freestanding furniture. Here, a mini bar equipped with a refrigerator is situated to starboard under the staircase; also to starboard is a day head, accessible from the side walkway for convenience. The twin staircases to port and starboard simplify access to and from the flybridge and further underscore the yacht's entertainment capabilities. Hinged windshield doors to the side decks are embedded in the diagonal wall for protection from the elements.





前甲板區

是一個大型露天休閒區域，與船橋戶外甲板區互通，形成一個多功能的戶外休閒娛樂社交平台。規劃有開闊的日光浴墊區以及可坐 12 人的 U 型大沙發區，而日光浴墊下方還有小矮櫃，左右也有抽屜式冰箱。左側還有小洗手台而下方也有櫥櫃。備用的遮陽棚及其棚架支柱也都可收納於前甲板 FRP 椅內。



後甲板區

採雙樓梯設計的超大休閒空間，設置有固定式長沙發、拼花柚木桌以及活動戶外家具。右樓梯下方空間還規畫一個配置冰箱的小吧檯。走道邊則有擋風側門而門片則內嵌在沙龍後方斜牆上。





Stern Area

Planned with a garage to store water toys and diving equipment, and easily accessed from the crew quarters, the stern area is an ideal place for guests to enjoy watersports with the convenience of a hi/lo swim platform and a custom extended gangway that can be controlled by a Bluetooth app.

In addition to the comprehensive space planning and amenities, the Horizon FD87 *NEA MONI V* motoryacht incorporates ABT TRAC 370/16X stabilizers, enlarged 45HP ABT bow & stern thrusters, a FLIR thermal-imaging night vision system and additional equipment for safe and comfortable cruising. High-strength carbon fiber covers on both sides of bridge deck staircases are installed for the owner/captain, so he can cover the staircase and utilize that space to maneuver the yacht via wireless Yacht Controller.

Featuring a unique style and extraordinary design and powered by twin MAN 1,200hp engines, the Horizon FD87 *NEA MONI V* motoryacht – which achieved a top speed of 16.1 knots at half load during her sea trials in Kaohsiung – is the perfect vessel for her owner to enjoy life on the water with family and friends. ➡

船艙區

從事親水活動的最佳地點。除了有一個也可從船員大廳進入的艇庫所規畫出的廣大儲物空間，供船主放置水上遊樂器材及潛水設備外，也有方便下海潛水的升降跳水板，以及可用藍芽 APP 控制的客製加長型靠岸梯供人員上下船隻。

NEA MONI V 除了以上完善的規劃及設施，還安裝 ABT TRAC 370/16X 穩定翼、加大為 45HP ABT 的艏艉推進器以及增加夜間航行安全的夜視鏡等。此外，也在船橋甲板左右兩舷設置碳纖維艙蓋，方便船主站在上面用無線操車操控船隻停泊及移動，並加裝消防泵以增加船艇安全。

19

這艘擁有獨特自我風格，完美詮釋歡樂至上設計理念的全新 Horizon FD87 **NEA MONI V** 快速巡航型遊艇，配備兩部 MAN 1200 匹馬力引擎，半載時極速可達 16.1 節，是船主與家人朋友享受海上休閒的最佳夥伴。🚤



15 Wednesday

Final assembling & testing OK
Exterior finishing OK
Client confirmation OK

All service works have ended today. As the first visit to Italy, seeing such a beautiful scenery in the end is very lucky. But, the best reward for our hard work, is always the satisfaction from customers!!

service diary on Elizabeth II
at marina Porto Antico, Genova, Italy

photography by Akito Tseng/ Project Manager of ARITEX



WE SERVE YOU THE BEST

ARTEX

The Best Yacht Hardware Company in Taiwan



THE CROSS-INDUSTRY APPLICATION OF AEROSPACE TECHNOLOGY (II)

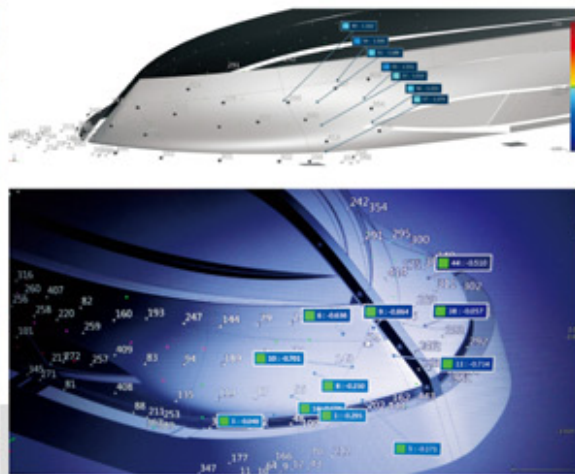
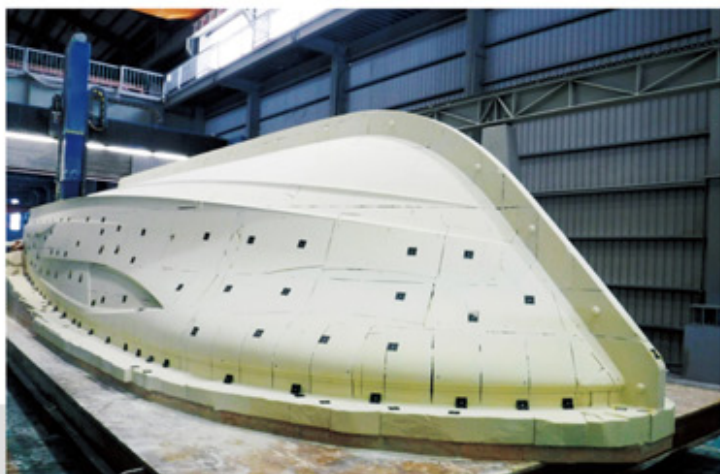
ATECH INCORPORATES OPTICAL 3D COORDINATE MEASURING SYSTEM TO ENSURE PRECISION IN YACHT MOLDS

航太技術之跨領域應用(二)

先進複材利用光學式 3D 量測系統

掌握船艇模具精度





Above :

To achieve the most precise measuring accuracy on large-scale projects such as this hull plug, 3D coordinates are pinpointed and measured using computer-aided data analysis.

上圖：

利用光學式 3D 量測系統及電腦輔助數據分析精準掌握公模精度

Atech Composites of Horizon Group is the only manufacturer in Asia that provides total-solution FRP component manufacturing — from mold design and fabrication to process design and product manufacturing. It is also the only Asian shipyard to borrow non-destructive testing technology from the aerospace industry to ensure final product quality. As the development of aerospace manufacturing technology and its application has progressed, Atech has continuously researched the application of this technology into yacht manufacturing, and this year has successfully implemented the Optical 3D Coordinate Measuring System to master the accuracy of its yacht molds.

嘉 鴻遊艇集團先進複材廠是目前亞洲唯一能提供客戶從模具設計、模具製造、製程設計到成品製造的一條龍式 FRP 遊艇構件製程完整解決方案的船廠。同時，也是亞洲唯一首創採用航太等級非破壞性檢驗技術進行成品檢驗，以確保高質量產品品質的船廠。而隨著航太製程技術及其應用不斷推陳出新，先進複材團隊也持續研究將更多航太等級技術導入遊艇製造，並於今年成功利用光學式 3D 量測系統掌握模具精度，製造更精良的船艇。



Non-Destructive Test
非破壞性檢驗

Complete FRP component manufacturing from mold design through fabrication

一條龍式FRP遊艇構件製程完整解決方案



The Optical 3D Coordinate Measuring System sets a new benchmark for measurement technology

The measuring principle of the Optical 3D Coordinate Measuring System is to photograph the surface of the mold via an optical lens probe, and then capture measured data from the beams' reflections off the photosensitive sticker attached to the mold's surface. After calculating and analyzing the measured data via software, the 3D digital information can be collected, and the profile differences between mold drawings and produced mold can be detected through computer data analysis. This method, also known as Computer-Aided Verification (CAV), can be used to measure small- and large-scale molds as well as finished products, and is a vital part of the process used by industries where precise measurement accuracy is critical, such as in the manufacture of aviation equipment, automobiles, precision instruments and hi-tech products. Boeing, for example, utilizes the same Optical 3D Coordinate Measuring System in the creation of its 737 aircraft interiors as is now being implemented at Atech.

Precise molds result in sophisticated high-quality yachts

A mold plays a key behind-the-scenes role in manufacturing and is sometimes referred to as the "Mother of Industry" because almost all industrial products – from airplanes to screws – must be pre-formed by a mold. When yacht components are produced at Horizon's shipyards, the first step is to mill a plug, then transform it to a female mold, and finally use it to fabricate the FRP products. Because every FRP yacht component is created in a mold, the dimensional accuracy of the plug and the female molds is particularly important. Thus, Atech applies the aerospace-grade Optical 3D Coordinate Measuring System with a high-end 3D MaxSHOT optical scanning machine and computer-aided detection to precisely measure the dimensions of the plug and female molds to produce yachts of the highest quality.

全新 3D 光學測量系統開啟量測技術新里程碑

光學式 3D 坐標測量系統的量測原理，是利用光學鏡頭對模具表面進行拍照，然後透過貼在模具表面感光貼紙的光線反射取得測量數據，再經過電腦計算和分析後，取得 3D 數位資訊，之後，利用電腦數據分析查看產品尺寸誤差，即可達到量測的目的。此量測方式又稱之為電腦輔助驗證 (CAV)，可同時用以量測小型和大型的模具及成品。其技術應用領域皆為精度要求甚高的產業，例如：航空器材、汽車製造、精密儀器、科技產品等，而先進複材廠則是亞洲第一家導入此航太等級 3D 光學量測技術的船廠。值得一提的是，世界頂尖的波音航空公司所生產的 Boeing 737 機型，曾利用融合多項 3D 設備的工程技術來進行飛機內部設計的 3D 建模，而在建模過程中所採用的 3D 量測技術，正是先進複材最新導入的光學式 3D 量測系統，由此可見此量測技術的準確性和可靠性。

25

精準的船艇模具造就精良的高品質遊艇

模具是製程的幕後關鍵角色，素有「工業之母」的榮譽稱號，因為幾乎所有的工業產品，大到飛機、汽車，小到杯子及螺絲，都必須依靠各式模具來成型。而嘉鴻遊艇集團廠內遊艇構件的製造流程也是先製作模具公模，然後翻製成母模，最後再利用母模生產 FRP 成品。由於其成品皆是由模具翻製而來，因此公模和母模的尺寸精準度就顯得格外的重要。有鑑於此，先進複材團隊導入高規格航太等級的光學式 3D 坐標測量系統，以百萬級 3D MaxShot 光學掃描儀器，加上電腦輔助檢測來進行公模與母模的產品量測，務求從模具製作開始把關尺寸，製造出最精良的遊艇。



Above :

After the mold is removed from the plug, it undergoes a thorough inspection and second measurement of the 3D coordinates and dimensions

上圖:

經船殼公模翻製而成的母模同樣再以光學式3D量測系統確認其精度

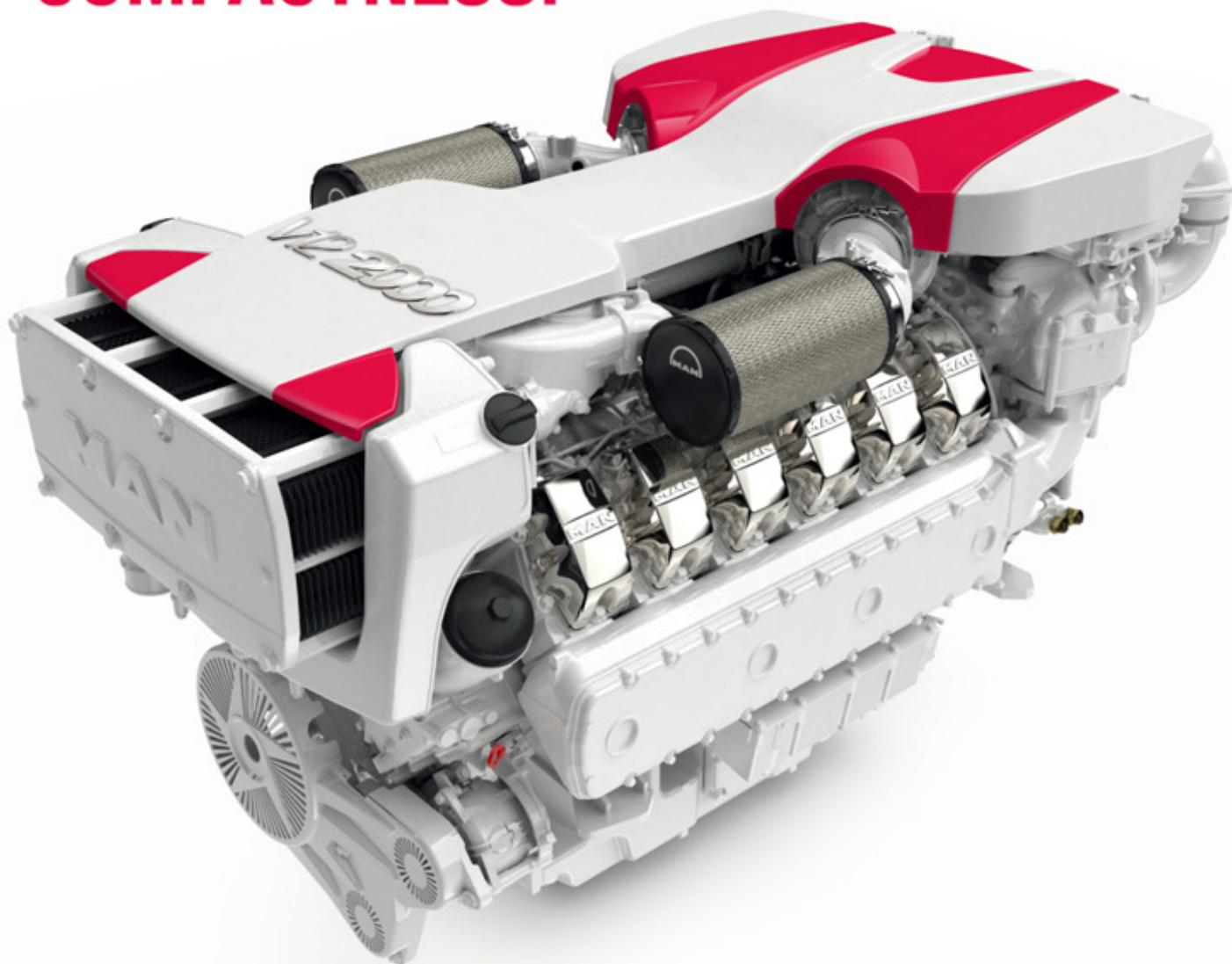
Atech's three-stage inspection technology applied to the overall manufacturing process ensures product quality

Dedicated to the continuous pursuit of excellence, Atech Composite provides the industry's most complete high-level inspection technology in the pre-, mid-and post-stage of yacht component manufacturing. The complete inspection process includes precise measurement of the mold, mechanical properties testing and selection of suitable materials, including the inspection of incoming materials before the process; careful inspection and quality control during the vacuum infusion, lamination and carpentry processes, and finally the inspection of each finished product through aerospace non-destructive inspection technology before shipment. The Atech team firmly believes that the highest quality products are derived only through the integration of thorough inspection technologies of the highest standards. ➡

完整的三階段高規格製程檢驗技術確保產品品質

先進複材廠一直秉持「追求卓越，永不止息」的技術核心目標，提供業界最完整的遊艇構件製程前、中、後三階段高規格檢驗能量，以確保產品高品質。此完整的三階段製程檢驗技術，從製程前的模具尺寸精準掌握、材料的機械特性測試和篩選、物料進貨檢驗等源頭開始確保產品製造品質，然後在製造過程中再針對真空、化工、木工等工段進行製程和品管檢驗，最後再透過航太等級的非破壞性檢驗技術，針對每個構件成品的關鍵部位進行出貨前檢驗。先進複材團隊確信唯有透過如此完整的高規格檢驗技術的層層嚴格把關，才能提供客戶最確實和最高品質的產品。 ➡

THE NEW BENCHMARK FOR PERFORMANCE AND COMPACTNESS.



24 litres of displacement. 2,000 hp.
2,380 kg dry weight.

The new MAN V12-2000 is the only twelve-cylinder V-engine with 2,000 hp (1,471 kW) to date, which generates enormous power from 24 litres of displacement. It impresses with extremely high power density of 61 kW per litre of displacement. The minimal space requirement and low dry weight of 2,380 kg spell out a clear advantage in terms of ship design, when compared to similarly powerful engines with larger displacement and more cylinders. Get impressed at www.man-engines.com

HIMAN TECH DIESEL CO., Ltd
TEL: +886 7 8156752 – Email: mail@himantech.com.tw

MAN Engines





Horizon Lifestyle





FD102 SKYLINE HULL ONE ON SCHEDULE TO DELIVER IN 2020

The first superyacht model in the acclaimed Fast Displacement Series features a walkaround design at the request of its European owner.

第一艘 FD102 Skyline 將於 2020 年如期交運

嘉鴻備受讚譽的 FD 快速巡航型遊艇系列第一款超級遊艇船型，

根據歐洲船主的需求採用望台外部環繞走道設計。



Horizon's Fast Displacement Series has been wildly successful since the first FD85 was introduced to the world in March 2016. When the head-turning styling, voluminous interior and high-performance hull design that characterizes this series is paired with Horizon's willingness to customize for its owners, the result is a continuously evolving series that improves with every new model.

嘉鴻遊艇的 FD 快速巡航型遊艇系列，自 2016 年 3 月正式推出第一艘 FD85 後，在全球市場皆取得巨大成功。之後，這個以引人注目時尚外觀造型、超寬敞內部空間和高性能船體設計而聞名的 FD 系列，更因為嘉鴻遊艇集團願意為船主的海上生活型態需求而設計的意願和客製化的實力，而成為一個持續加入新船型且不斷擴展的遊艇系列。

Aft Deck
後甲板區





Salon
沙龍

Such is the case for the brand new Horizon FD102 Skyline, the first 'superyacht' of the acclaimed series, which now includes the FD77, FD85, FD87 and FD125 models. The owner was originally interested in a bigger version of the FD87 Skyline and requested a yacht with an extended range and more superyacht amenities and design aspects, such as walkaround decks. He wasn't ready for the jump into the FD125, so Horizon and series designer Cor D. Rover returned to the drawing boards to customize a yacht that suited this owner's vision. The result was the FD102 Skyline, which is nestled comfortably between the FD87 and FD125 and offers many design and layout features not typically found on a 100ft motoryacht.

At an overall length of 105 feet, the FD102 Skyline offers a wide 24' 2" beam and large outdoor spaces accessed by a unique walkaround design on the bridge deck. This design maintains the privacy of the interior spaces while providing a seamless transition between forward and aft exterior entertaining areas. A spacious lounging/dining area also provides tender stowage aft while a unique forward deck arrangement features a u-shaped settee and Jacuzzi tub just forward of the bridge with a sprawling sunpad on the foredeck.



Dining Area
用餐區



Master Stateroom
主人房

最新開發的 FD102 Skyline 就是這樣的例子，而這個新船型也成為備受讚譽的 Horizon FD 系列繼 FD77、FD85、FD87 和 FD125 後的第一個「超級遊艇」船型。FD102 Skyline 的船主，原先是傾向於訂製一艘進階版的大型 FD87 Skyline 遊艇，可以擁有更遠的航行距離，並且增加超級遊艇的設施和規劃，例如望台外部環繞式走道。由於當時船主尚未準備好直接訂購更大型的 FD125 船型，因此嘉鴻團隊和 FD 系列設計師 Cor D. Rover 就重新針對船主的需求，設計一艘適合的遊艇。結果，就開發出這款全新的 FD102 Skyline—這是一款位於 FD87 和 FD125 之間的船型，擁有許多 100 英尺動力遊艇不常見的設計和格局規劃。

全長 105 英尺的 FD102 Skyline，擁有 24 英尺 2 英寸大船寬，而獨特的望台外部環繞走道設計則讓前後寬敞的戶外空間無縫接軌。這樣的設計，既能保有望台室內空間的隱密性，也可巧妙連接望台前後戶外區域，成為一個大型戶外社交娛樂平台。其寬廣的外部區域除了在望台前方規劃有 U 型沙發座椅區和按摩浴缸外，還在前甲板設置一個寬大的太陽浴墊供賓主享受日光浴，而望台後方區域則有休閒/用餐區和足夠擺放小艇的寬敞空間。



Above :
The hull of the FD102 Skyline undergoing the vacuum infusion process

上圖:
FD102 Skyline 船模真空灌注

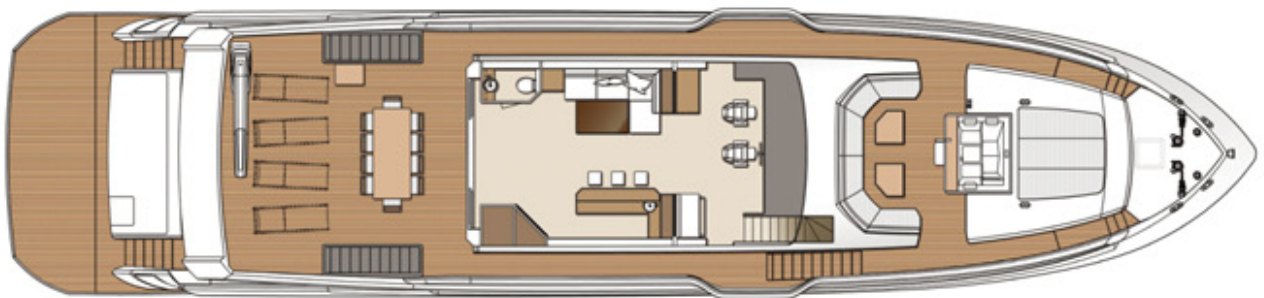


At the core of the FD102 Skyline is the flexibility in layout that allows this voluminous, five-stateroom yacht to be tailored to her owner's vision. Construction began immediately after the contract was signed at the Monaco Yacht Show in September. Tooling is now complete and the FD102 Skyline is currently in the laminating phase, with delivery to her European owner on schedule for 2020. ➡

這艘全新 Horizon FD102 Skyline 快速巡航型遊艇，以彈性格局為設計核心，依照船主的需求及期望規劃出五間寬敞大艙房，並且自 9 月摩納哥遊艇展簽訂合約後，即開始施工。目前，FD102 Skylin 已完成開模作業，現正進行積層階段，並將按計劃於 2020 年如期交付給歐洲船主。 ➡

FD102 Skyline Concept Design

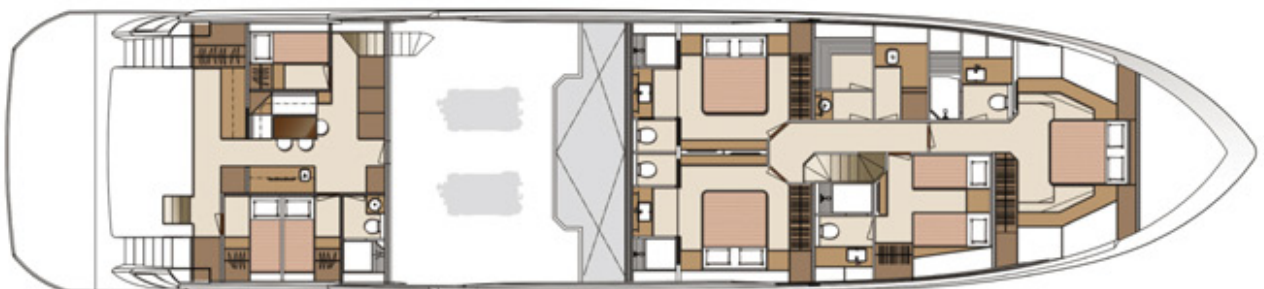
35



UPPER DECK



MAIN DECK



LOWER DECK





Horizon Lifestyle

遊艇鑑賞
FEATURE
BOAT

38



THE NEW HORIZON PC65 POWER CATAMARAN, *POMBOO*

HORIZON'S FIRST PC65 POWER CATAMARAN
IS HER OWNER'S THIRD PC SERIES YACHT

HORIZON PC65 *POMBOO* 海豚號

嘉鴻第一艘 PC65 雙艙體遊艇；船主的第三艘 PC 系列遊艇



Since its introduction, the Horizon PC Series has become a favorite of twin-hull enthusiasts, who appreciate the casual design elegance and superior performance of these power catamarans. Following the success of the PC52 and PC60 models, Horizon continued developing larger models for the series and debuted the flagship PC74 at the 2018 Miami Yacht Show. The latest debut for the series is the brand new PC65, built for an American client who previously owned both a PC52 and a PC60 and requested a slightly larger vessel with a longer range.

39

以豪華遊艇等級的規格及品質，打造休閒雙體船的設計而廣獲雙體船愛好者喜愛的 Horizon PC 系列，繼大受歡迎的 PC52 及 PC60 後，嘉鴻遊艇集團接續推出 74 英尺的旗艦雙體船型 Horizon PC74，並於今年 2 月在邁阿密船展公開亮相。而最新開發的 PC65 船型也在剛落幕的 2018 羅德岱堡遊艇展展出第一艘成品 - Horizon PC65 *POMBOO* 海豚號，這是熱愛雙體船的美國船主繼 PC52、PC60 後的第 3 艘 Horizon PC 系列遊艇，滿足船主想與更多親友航行更遠旅程的期待。



遊艇鑑賞 FEATURE BOAT

Right:

On the underlit cabinet in the master stateroom entryway, a sculpture of dolphins playing in the ocean gives nod to the yacht's name

右圖:

入口處的端景櫃放置了一尊內嵌海豚的雕塑品，襯著發著光亮的櫃面，就像海豚躍出瀾瀾波光的海面，也呼應出船名的由來！



Christened *POMBOO* and unveiled at the 2018 Fort Lauderdale International Boat Show, the new PC65 was designed in a collaboration between Horizon Yachts and world-renowned naval architect Angelo Lavranos. *POMBOO* retains the high-performance twin-hull design of the Horizon PC74, with its excellent seakeeping ability, as well as the unique features and advantages of the series sisterships, including a wide 24'6" (7.47m) beam, signature large-scale portholes, enlarged 1,500-gallon fuel tank for extended cruising, and four-stateroom layout comprising an on-deck master stateroom.

Outfitted in walnut wood accented by a majilite white leatherette, *POMBOO*'s stylish interior features white-washed oak walls in a satin finish complemented by high-gloss Wenge countertops. Appealing to the American market, the interior style also features hi-gloss walnut stair handrails with thin, round stainless steel tubes that echo the wall coverings.

The spacious salon is graced by an attractive overhead treatment of wave-pattern panels with a hi-gloss walnut panel that winds from either side of the ceiling to the entrance of the on-deck master. This design was inspired by the owner, who visualized a concept of water streaming into space. To starboard, an L-shaped leather sofa accompanying a hi/lo walnut table and rotating armchair comprises a convivial conversation area, with a 50" wall-mounted television diagonally opposite. Glass cupboards atop the A/V closet and a wine cooler are situated on the portside aft. An underlit Carporee surface lends an elegant visual effect, which is mimicked by another underlit surface within the cabinet next to the master stateroom entrance. Forward to port, the fully equipped galley is open to the salon but separated by a long curved bar with three stools that provides convenient service to guests in the salon.





Horizon PC65 **POMBOO 海豚號**，係由嘉鴻攜手紐西蘭船體設計師 Angelo Lavranos 合作開發的 65 英尺雙體船，不僅承襲 Horizon PC74 旗艦雙體船殼優異的航海性能，還完美融合 PC60 與 PC74 的造型特色及船型優點，包括擁有超越 100 英尺單體船的 24 英尺 6 英吋 (7.47 米) 大船寬、油箱增大至 1500 加侖方便延長航行旅程、包含一間主甲板主人房的 4 房規劃可容納更多親友同遊、增加下艙室內採光，以及延續辨識度極高的 PC 系列大面積造型舷窗設計等。

POMBOO 海豚號 的內裝設計以色澤耐看且細膩的亮漆胡桃木為主體，搭配胡桃木線條飾板與米白色皮革裱板，並以清爽的消光染白橡木牆面與沉穩的亮面鐵刀木檯面營造美式風格，而樓梯扶手則為亮面胡桃木搭配細圓管五金，與室內牆面相互呼應。

走入寬敞舒適的沙龍空間，首先吸引目光的是如波浪般的造型天花板，而其波浪兩側彎曲造型如堤岸的胡桃木飾板則一路往下延伸，流暢地將入內者的目光由造型天花板移轉到最深處的主人房入口玄關，引導出流暢的動線，其靈感來自船主想把流水的概念融入空間的想法。右舷設置 L 型皮革沙發並搭配可升降胡桃木長桌及旋轉單椅，加上斜對角的 50 吋壁掛電視，可讓賓客在此放鬆享受休閒時光，而玻璃杯櫃、影音櫃和冰酒櫃，也完美的規劃在左舷後方。尤其，當 LED 燈開啟時，冰酒櫃的卡波麗透光石檯面會透出石材紋理，既提升優雅質感也營造視覺效果；另一個吸引目光的發光檯面則位在主人房入口處的端景檯。另外，一應俱全的環繞式雙檯面開放式廚房則位在左舷前方，並以弧形長吧台與沙龍做出區隔，能即時提供沙龍區所有賓客的餐飲服務。

Spacious and sunny, the on-deck master stateroom continues the style of the salon with hi-gloss walnut furnishings balanced by majilite white leatherette walls. A custom electric bed with storage underneath and a headboard in the same design of the salon overhead can be operated by remote control, and electric Silhouette shades are easily adjusted if less lighting and privacy required.

Attention to detail was paramount in the design of *POMBOO*'s master suite, from the indirect lighting to the vanity-cum-working desk, wall-mounted television, half-height wardrobe and two full-height closets. A same-level day head is situated in the aft corner to port, while a larger, separate bathroom and shower area is located on the lower level and equipped with full mirror cabinets and a full-height shower. Mosaic walls and Corian flooring lend a sense of luxury to the area.

Three guest staterooms are positioned on the lower deck, each with a separate toilet and shower. Forward to starboard, the VIP stateroom – highlighted by dark walnut wood and majilite white leatherette – incorporates satin-finished oak cabinets and teak flooring and conveys a sense of elegance that is complemented by the abundant natural light through a large porthole. The portside stateroom is finished in white-washed oak and brown leatherette and houses twin beds with well-planned storage to starboard and bronze mirrors to enhance the spacious visual effect. The aft starboard stateroom features white-washed oak satin furnishings, hi-gloss Wenge countertops, teak flooring and a television mounted on a cabinet door. A storage cabinet in the companionway houses a washer/dryer and drop-down ironing board.



Master Stateroom
主人房



VIP Stateroom
貴賓房



VIP Stateroom
貴賓房

三面採光的主人房規劃在沙龍前方。室內以華麗沉穩的胡桃木亮漆傢俱櫃體延續沙龍風格，而米白色人造皮革牆面則以胡桃木線條飾板與米白色皮革裱板修飾。床頭板同樣也採用波浪紋麗樂飾板搭配胡桃木 4 英吋亮框，並以間接光源營造出主臥室浪漫柔和氛圍。以遙控器操作的客製化電動床組在床底下設有收納空間，而窗戶的電動絲路雅簾則讓船主可自由調整採光與隱私需求。超大空間感的主人房還設置壁掛電視、化妝台兼辦公桌，以及 2 個全高衣櫃與半高衣櫥。特別的是盥洗室設計在房間左後方，而超大乾濕分離浴室則規劃在下層左前方。浴室內有一整片鏡櫥、珍珠貝殼磚牆面及配備升降手持花灑的珍珠貝殼磚馬賽克沖洗柱，其堆疊立體磚的拼貼，賦予空間跳躍感，而珍珠貝殼光彩變化的豐富效果則顯現主人房的奢華質感。



Guest Stateroom
客房



三間有獨立乾濕分離浴室的客艙房均位在下層艙。在右舷前方的 VIP 貴賓房，延續主甲板內裝風格，以深色胡桃木搭配米白色皮革，檯面下則以清爽的消光染白橡木傢俱櫃體延伸，並鋪設柚木地板；整體以淺色調鋪陳，營造優雅舒適的睡眠環境，而寬度近 9 英尺的大面積造型舷窗則引進大量自然光線，增加室內採光效果。另外還規劃有壁掛電視及化妝台兼辦公桌等。提供 2 個單人床的左客艙房仍延續下艙風格，以清爽的消光染白橡木傢俱櫃體及咖啡色皮革為主色調，而檯面則以深色鐵刀亮漆呈現；床頭的茶色鏡子創造出寬敞的視覺感，而妥善利用空間規畫的開放收納櫥櫃則設計在右側。右後客房則以消光染白橡木搭配亮面鐵刀木檯面與咖啡色皮革，並鋪設柚木地板。此外，位於右舷下層走道的儲櫃則配置洗衣機與乾衣機，下方則有抽屜可收納清潔物品，而牆邊打開有燙衣板可使用。

遊艇鑑賞
FEATURE
BOAT



44

The Horizon PC65 is offered in either Open Bridge and Skylounge arrangements, and the first PC65 *POMBOO* is designed with an enclosed skylounge, which consists of a forward pilothouse equipped with a Garmin navigation system, twin STIDD helm chairs and a built-in seat, a portside bar incorporating a drawer refrigerator, a recessed bookshelf atop a glass cupboard, and an L-shaped sofa area with a triangular hi/lo coffee table to starboard. The exterior area of the bridge deck offers an expansive space to store a tender or lounge chairs and includes a davit, plenty of storage and a wet bar equipped with a Gaggenau electric grill. Another special feature is a mini radar arch designed to easily pass under bridges in some of the owners' favorite cruising grounds.

The twin-hull design of the Power Catamaran series allows for multiple exterior entertaining areas. The aft deck is large enough to host a teak dining table for eight, a built-in settee with storage, a full-height locker, and a mini bar with an undercounter sink and refrigerator/icemaker. Here, a third steering control is hidden at both sides for convenient docking. The bow deck features sunpads with walk-in storage and the hidden chain locker is an ideal design for a flush deck.



Enclosed Skylounge
包覆式船橋



PC65 船型有開放式及包覆式兩種船橋造型選擇，第一艘 PC65 *POMBOO* 海豚號則採包覆式船橋設計。在天花板挑高設計的 Skylounge 前方為整齊羅列全套 GARMIN 電子航儀設備的駕駛台，配備兩張 STIDD 駕駛椅及左側雙人座；左後方則有配備水槽及抽屜式冰箱的吧檯區，並規劃有盥洗室，而右後方則是 L 型沙發區，共同組成兼具休閒娛樂與會議功能的複合式區域。Skylounge 外部的戶外船橋區則除了規劃一個戶外吧檯，並在吧台櫥櫃內配置有安全感應開關的方型電烤肉爐，當上蓋蓋起來時可自動切斷電源，另外也安裝小艇吊桿，並有寬敞空間可放置小艇或休閒躺椅。此外，設計團隊也應船主要求，在此規劃大量收納儲物空間。而此船另一個特別的設計就是為了順利通過船主當地海域的橋樑，還特地客製一個迷你版的雷達架。

擁有超大外部休閒娛樂空間，是 Horizon PC 系列的一大特色。因此，PC65 *POMBOO* 海豚號的後甲板區也擁有寬闊的空間，並設置 8 人座柚木亮面迎賓桌，而沙龍大門口右舷則規劃吧檯並安裝隱藏式洗手台、冰箱/製冰機，以及全高儲櫃，可供船上賓主在此輕鬆享受戶外休閒娛樂。另外，固定式沙發座椅下有儲放空間，而地板下也規劃有大量儲物區。此外，為方便船主移泊，也在左右兩邊規劃隱藏式第三站操控系統。寬敞的前甲板區則除了在日光浴墊區下方規劃超大走入式儲藏室外，也在階梯下規劃有層板方便收納的儲藏空間，而隱藏式錨道的設計，則讓此區既美觀又不影響動線。

遊艇鑑賞
FEATURE
BOAT

46



Powered by twin CAT 985hp engines, the Horizon PC65 *POMBOO* reached a top speed of 24.7 knots at half load during sea trials, and will enable the owner and his family to explore the world's oceans thanks to its 1,500gal fuel tank and estimated range of 1,300nm at 10 knots. Exceeding the market standards in the 60 - to - 75ft range, the Horizon PC65 offers excellent seakeeping capabilities with both high performance and efficiency, as well as the spaciousness, luxury and stability provided by the PC Series. Evidenced by the new *POMBOO*, the Horizon PC65 is yet another ideal choice for owners who desire a comfortable cruising experience with all of the amenities of the luxury yacht. ➡

Horizon PC65 *POMBOO* 海豚號 搭載兩部 CAT 985 匹馬力引擎，並配置 1500 加侖油箱，經實際海上測試，半載極速可達 24.7 節，若以 10 節的巡航速度，則可航行達 1300 海哩，帶領船主探索更遠的海域。滿足 60 - 75 英尺雙體船市場的 Horizon PC65 船型，擁有兼顧高效節能的優異航海性能，以及 PC 系列引以為傲的超寬敞內外部空間、豪華內裝質感及航行平穩度，是喜愛享受舒適航遊體驗的船主一個理想的船型選擇。➡

Fulfilling the yachting dreams of our ocean-loving clients





THE BUSY SEASON: SIX HORIZON YACHTS AWAIT DELIVERY TO OWNERS WORLDWIDE

In the bustling Horizon delivery center, six shining new Horizon yachts are being prepared for shipment to owners and markets around the world. With 16 yachts currently under construction at the Kaohsiung-based complex, the magnificent fleet awaiting delivery is further testament to the yard's prowess on the world stage. Thirty years of yacht building experience has solidified Horizon's position as a leading yacht manufacturer, recognized by experienced yachtsmen everywhere for the craftsmanship, technology and quality of each yacht build.

Of the six new builds in the delivery center, two are FD87 Skyline models — hulls 7 and 9. The FD (Fast Displacement) Series is known for its contemporary lines, efficient performance and spacious interior volume, which has attracted the attention of many seasoned owners — resulting in new orders — since it was first introduced in March 2016.



HORIZON 嘉鴻遊艇集團

豐收的季節：六艘全新 HORIZON 遊艇 已完工準備交付全球船主

來 到嘉鴻遊艇集團交船中心，映入眼簾的是六艘準備交付給世界各地船主們的嶄新又耀眼的 Horizon 遊艇。壯觀的景象以及廠內 16 艘建造中遊艇產能滿載的盛況，展現出嘉鴻遊艇集團在全球經營的豐碩成果，而累積超過 30 年的造船工藝與技術，除了獲得船主的信任與肯定，也鞏固 Horizon 遊艇領導品牌的地位。

在交船中心的六艘全新遊艇中，有二艘是 FD87 Skyline 的第 7 及第 9 號船，另外四艘分別是：PC52 及 PC65 雙體船，以及 V68 和 E75 動力遊艇。FD 系列自推出後，即以現代前衛外觀設計、卓越航海性能及寬敞格局配置，深獲全球船主青睞並反映在亮眼的訂單上。而持續熱銷的 PC 雙體船型，以及 V、E 等系列船型也深受不同市場的船主喜愛。



HORIZON PC52 | E75 | V68



HORIZON FD87 Skyline



The remaining four yachts fall into the under-80ft category and comprise the V68 and E75 motor yachts and the PC52 and PC65 power catamaran models. The PC65 and the FD87 Skyline hull 9 will make their way to the United States to join the showcase appearing at the Palm Beach International Boat Show in March, 2019. The Horizon E75, FD87 Skyline hull 7, V68, and the two power catamarans will be delivered to owners in Australia, Europe, and the United States.

“Every member of the Horizon team is passionate about yacht building, and we are dedicated to a professional collaboration that incorporates the owner’s vision into each yacht project,” said Horizon Group CEO John Lu. “This is the primary reason for our competitive edge in the industry. 2018 was a very prosperous year for Horizon Group and we believe the momentum will continue in 2019!” ➡

等待交運的第 7 號 FD87 Skyline、PC 雙體船、V68 及 E75 遊艇，都將於一月分別運送給歐洲、美國及澳洲等地的船主，而 FD87 Skyline 第 9 號船和 PC65 則會在三月的美國棕櫚灘船展公開亮相。

嘉鴻遊艇集團呂佳揚執行長表示：「Horizon 團隊的每一位成員都對建造遊艇充滿熱情，並且樂意傾聽客戶的聲音，致力實現客戶的遊艇願景。這是我們可以獲得客戶信賴並在遊艇市場上具有競爭優勢的主要原因。」而對未來的展望，呂執行長則說道：「對嘉鴻而言，2018 年是非常繁忙且豐收的一年，而且我們相信這種榮景會一直延續到 2019 年！」 ➡



台灣精品金質獎
TAIWAN EXCELLENCE
GOLD AWARD 2019

新聞亮點

SPOT
LIGHT

52



HORIZON YACHTS AND THE HORIZON FD87 SKYLINE HONORED WITH FOURTH TAIWAN EXCELLENCE GOLD AWARD

For the ninth consecutive year, Horizon Yachts is the honored recipient of a Taiwan Excellence Award. Presented at the 2019 Taiwan Excellence Awards gala in early November, this award represents the highest honor of MIT (Made In Taiwan) products. Horizon's acclaimed Fast Displacement Series of motor yachts received its own distinction, with the Horizon FD87 Skyline being recognized with a "Taiwan Excellence Gold Award".

The recipients of the 2019 Taiwan Excellence Awards were selected from 245 manufacturers, representing over 470 products, who are admired for their innovation in four categories: R&D, design, quality, and marketing; while the winners of the "Gold Award" are selected from the 30 winners of the "Taiwan Excellence Award."

Great features, a stylish design and state-of-the-art amenities define the Horizon FD87 Skyline luxury motoryacht, which has now been further endorsed by these two coveted Taiwan Excellence Awards. Featuring unique exterior styling, the innovative 87ft fast displacement FD87 motoryacht boasts an efficient layout, contemporary design and superior cruising capabilities, complemented by living and entertaining spaces comparable to 100-foot-plus megayachts.

The FD87 Skyline is the first of the series to feature an enclosed bridge design, which was requested by her owner. This design allows for additional indoor entertaining and lounging areas, while multifunctional exterior spaces further add to the experience. The FD87 Skyline also features a spacious beach club and swim platform as well as an inviting seating area on the foredeck.

Yet another significant feature of the FD87 Skyline is Horizon's innovative "High Performance Piercing Bow" design, which brings both efficiency at slower speeds and performance at higher speeds.

"We've seen much success with our Fast Displacement Series since it was first introduced in March 2016," says Horizon Yacht Group CEO John Lu. "To be recognized with another Taiwan Excellence Award is a great honor and is further incentive for Horizon to continue innovation in the world of high quality yacht building." ➡

嘉鴻遊艇以 HORIZON FD87 SKYLINE 船型 榮獲第四座台灣精品金質獎



年，嘉鴻遊艇集團連續第九年以精良卓越的遊艇再度榮獲台灣精品獎。這個代表 MIT 台灣產品最高榮譽的獎項，於日前在台灣精品獎頒獎典禮頒發，而嘉鴻廣受好評的 FD 快速巡航型遊艇系列，則以 FD87 Skyline 船型勇奪「台灣精品金質獎」殊榮。

2019 台灣精品獎的 30 位得獎者，是從 470 多項評選產品的 245 家廠商中選拔出來，表揚其在研發、設計、品質和行銷四大領域的優異創新表現，而「金質獎」桂冠得主則是由這 30 位獲獎者中脫穎而出。

53

這艘獲得兩個台灣精品獎項肯定的 87 英尺創新快速巡航遊艇：Horizon FD87 Skyline，以獨特前衛外觀造型、強大功能配備以及最先進的航海設施，受到全球市場客戶的喜愛。不僅具備高效的格局規劃和現代化的潮流設計，還擁有優異的巡航能力，以及媲美 100 英尺以上大型遊艇的生活和娛樂空間，是喜愛享受海上休閒的船主完美的遊艇選擇。

FD87 Skyline 是 Horizon FD 系列中第一個採用包覆式船橋造型的遊艇，此設計來自船主的需求，既可增加額外的室內娛樂和休閒區域，也有寬敞的多功能戶外空間可滿足休閒及社交活動需求。另外，船艙還規劃有寬敞的親水交誼廳和升降跳水板，而前甲板則有休閒座椅區供享受日光浴。此外，FD87 Skyline 還有一大特色就是嘉鴻創新的「高性能穿浪艏」設計，可在慢速時提供高效率節能，而快速時則展現優異的航海性能。

對於今年再度榮獲金質獎，嘉鴻遊艇集團呂佳揚執行長很高興說道：「我們的 FD 快速巡航型遊艇自 2016 年推出以來，已收穫許多佳績，是一個很成功的遊艇系列。」「再度榮獲金質獎，對我們是一個巨大的榮耀，也激勵我們繼續在全球市場的高品質遊艇製造領域上不斷創新，建造更卓越的 MIT 遊艇。」 ➡



專題特寫
IN
FOCUS

YOU DREAM, WE DELIVER

你的夢想遊艇，
交給 HORIZON 建構成真





Our clients often share with us the vision of the yacht they have dreamed of for years. For more than three decades, Horizon has translated these visions into realities. We build dream yachts for and with our clients, and celebrate alongside them when they are able to realize their dream, aboard their yacht with the people they love. This is what we are proud of – you dream, we deliver.

我們的客戶經常與我們分享他們夢寐以求的遊艇願景。三十多年來，嘉鴻遊艇集團將這些願景都一一實現。我們與客戶一起建造他們的夢想遊艇，跟他們一起慶祝美夢成真的時刻，也為他們能與心愛的家人朋友共享快樂遊艇生活而高興。我們自豪的是一實現客戶的夢想，將憧憬建構成真。

Having delivered nearly 820 yachts and been recognized with numerous prestigious yachting awards, Horizon Yachts has solidified the trust of our owners and partners. We have long been pioneers in the yacht building market with many impressive series of yachts ranging from 52ft to 150ft, such as the best-selling E series, the classic catamaran PC series, and the recently introduced and wildly successful FD series. We have built many yachts that fulfill our owners' dreams. This success has not come without great effort, however, and is the result of several key strategies:

嘉 鴻遊艇集團至今已交付超過 820 艘遊艇，並獲得國內外許多知名遊艇獎項，也與船主和合作夥伴建立起高度信任的關係。長期以來一直是遊艇製造市場的先鋒，開發許多從 52 到 150 英尺令人印象深刻的遊艇系列，如經典熱銷的 E 系列，PC 系列雙體船型以及近期在全球遊艇市場刮起旋風的 FD 快速巡航型遊艇系列。我們建造了很多滿足船主夢想的遊艇。然而，這些成就並非一蹴可幾，而是透過堅持不懈的努力以及幾個關鍵核心能力的成果。





Strategy 1: Sophisticated market intelligence

Many clients trust Horizon not only because we are a yacht builder with state-of-the-art facilities and professional in-house R&D and interior design teams, but also because we have sophisticated market intelligence. Uniquely, our product line covers a broad spectrum of yacht types that satisfy the dreams of our clients in the U.S., Australia, Japan and Europe – markets in which we are enjoying a growing market share. Learning about the needs, preferences and boating lifestyles of each of these markets helps us to anticipate the dreams of our clients in each region of the world and incorporate them into the development of a yacht.

When Horizon began considering the FD85, a new fast displacement, mid-range motoryacht, for example, we discussed the concept with our partners and mid-size yacht clients. In analyzing these clients' lifestyles, we concluded that they enjoyed sharing their yacht with family and friends; that entertaining groups was an important factor in their choice of layout, as was the ability for the owners to easily manage the yacht themselves. This led to the development of the FD85, a safe and stylish yacht with an interior and exterior as voluminous as possible.

關鍵1：精準成熟的市場洞察力

許多客戶信賴嘉鴻遊艇集團，不單單因為我們是一家擁有先進設施以及專業的研發和室內設計團隊的遊艇製造商，還因為我們深諳各區市場的喜好，並有著精準成熟的市場洞察力能準確掌握遊艇的潮流趨勢。Horizon 遊艇的獨特之處是產品系列涵蓋非常廣泛，因此能夠滿足美國、澳洲、日本和歐洲的不同客戶需求，而且我們在這些市場的品牌佔有率還在持續增長。對每個市場的需求、喜好和遊艇生活型態的了解與掌握，有助於我們預測世界各地客戶對遊艇的期望與夢想，並將其融入新船型的開發中。

例如，當初開始考慮開發 FD85 這款中型的新式快速巡航型遊艇時，我們就與合作夥伴和中型遊艇客戶共同討論這個概念。當分析完這些客戶的生活型態後，我們得出這樣的結論：他們喜歡與家人朋友共享遊艇生活，滿足親友的娛樂休閒需求是他們選擇何種格局的重要因素，而可以讓船主自己輕鬆操控遊艇的能力也是他們考量的理由。這些訴求決定了 FD85 的發展方向，即一艘內外部活動空間要極盡寬敞的安全又時尚的遊艇。推出後，從銷售成績及 FD 系列快速在兩年內發展出一系列從 70-125 英尺的船型，得以驗證嘉鴻準確掌握對市場的需求。



Strategy 2: Naval architecture expertise backed by research and testing

When the ideas for a new model become clear, the Horizon team collaborates with designers to develop the concept. There are two main phases to build a new boat: “preliminary design” and “detailed design”.

- Preliminary design phase: This phase consists of seven elements all related to performance: style, hull lines, weight, speed and powering, stability, structure, and space. Since the elements affect one another, the R&D team must take turns examining the sequence of each element. The process of evaluating the elements, known as the design spiral, is one of the most important pieces of the technical know-how of naval architecture. Through the process, the team makes modifications to suit their own design sequence based on finding solutions to the major trade-offs of a new boat.
- Detailed design phase: After the executives confirm and approve the drawings, test statistics, and figures, the preliminary design phase ends and the project enters the tooling stage and the detailed design phase simultaneously. The detailed design phase expands upon the preliminary design phase and finalizes all of the details necessary based on the design package, technical drawings, and schematics, and includes hull form and outfitting design, structural and mechanical attributes, and stability analysis.





關鍵2：以專業研究和嚴密測試做遊艇建造的堅強後盾

當新船型的概念變得具體時，嘉鴻團隊就開始與設計師合作開發。建造新船有兩個主要階段：「初步設計」和「細節設計」。

- 初步設計階段：

此階段包括與性能相關的七個要素：造型、船體線條、重量、速度、動力、平穩度、結構和空間。由於這些要素相互影響，因此，研發團隊必須輪流檢查要素的排列順序。評估這些要素的過程稱作設計螺旋，是海上建築專業技能中最重要的部分之一。通過這個過程，團隊可以找到新船主要的權衡解決方案，並據此進行修改以符合他們自己的設計順序。

- 細節設計階段：

當決策者確認並批准圖稿、測試統計資料和數據後，初步設計階段就宣告結束，然後此專案就會同時進入開模階段和細節設計階段。細節設計階段是將初步設計階段加以擴展，並根據整個設計內容、技術圖樣和圖表，歸納出所有必要的細節，包括船體形狀、外部設計、結構和機械屬性以及航行平穩度分析。



專題特寫

IN
FOCUS

60



During the design phases, the trade-offs between performance and volume is usually a major concern as it is challenging to balance both features within a yacht. Sometimes, to create a large interior space, the yacht builder has to compromise on performance, and vice versa. When the Horizon team and designer Cor D. Rover developed the impressively spacious accommodations of the FD85, for example, we faced the same challenge.

To deal with this issue, the Horizon team spent countless hours of research and using the most advanced CFD (Computational Fluid Dynamics) programs available to simulate various hull designs. Eventually, we developed a successful High Performance Piecing Bow (HPPB), which, in conjunction with the hybrid hull shape and tunnel design, delivers a shallow draft, more comfortable ride, lower resistance and excellent stability.





61

在設計階段，性能和體積之間的權衡，通常是一個極大的挑戰，因為必須思考如何平衡遊艇這兩個主要特色。有時，為了創造出大的內部空間，遊艇製造商必須在性能上做出妥協，反之亦然。就像嘉鴻團隊和 Cor D. Rover 設計師要開發 FD85 令人印象深刻的寬敞空間時，也面臨同樣的挑戰。

為了解決這個問題，嘉鴻團隊花了無數小時研究，並使用最先進的 CFD 流體力學計算程式來模擬各種船體設計。最後，我們終於成功開發出一款高性能穿浪艏（HPPB）。結合這個特別研發的船艏和高性能的船殼設計，便能提供 FD85 淺吃水、低阻力、絕佳的平穩度和更舒適的航行體驗，兼具良好性能的同時，仍保有寬敞的內部空間，是遊艇製造中相當成功的成果。



Above:

The High Performance Piecing Bow (HPPB) delivers a shallow draft, more comfortable ride, lower resistance and excellent stability.

上圖：

高性能穿浪艏（HPPB）為 FD 系列帶來淺吃水、低阻力、絕佳的平穩度和更舒適的航行體驗。

Strategy 3: We listen and dare to be different

As a new model design evolves and clients become involved in the process, changes to the original drawings are inevitable. Such is the case of the FD87 Skyline motoryacht, whose design was inspired by the owner's lifestyle request and led to a new enclosed bridge option of this stylish series. Optimized for improved flow and layout, the FD87 Skyline design proved to be highly sought after by various global markets.

The value of customization is not simply a yacht built on clients' requests. We listen carefully to their needs and present a professional and feasible solution, and then seek the means to achieve the challenge. When the FD85 *JULIND*'s owner, who is a certified pilot and owner of two helicopters, specified that the yacht be built with a helipad, Horizon invested in hours of research and numerous structural calculations before constructing a carbon fiber bridge hardtop that passed the certification to meet the structural strength required for the helipad. To provide a safe landing area, Horizon also built a foldable hydraulic radar arch to meet the dual needs for both a landing area and reduced height for navigating the low fixed bridges in Perth, Australia.



關鍵3：傾聽需求並勇於與眾不同

當一個新船型逐步開展設計而客戶又參與其中時，原始圖樣的更改就不可避免了。FD87 Skyline 動力遊艇的情況就是如此。其設計靈感是來自船主的生活型態，為此才開發出一個符合其需求的新型包覆式船橋，也因此才成為 FD 系列的另一款新船型選擇，而這款擁有優化動線和格局的 FD87 Skyline，也因此受到全球市場的高度追捧。

真正實踐「客製化」，不是指根據客戶的要求照單全收的建造出一艘遊艇。而是先仔細聆聽客戶的需求，分析解構這些需求背後的主要考量，再提出專業可行的解決方案，尋找方法去完成這些挑戰，這才是真正落實並呈現客製化的價值。當 FD85 *JULIND* 的船主（擁有兩架直升機的合格飛行員）指定要建造有直升機停機坪的遊艇時，嘉鴻團隊投入了無數小時的研究和大量的結構計算，才能建造出通過直升機停機坪所需結構強度認證的碳纖維船橋頂棚。而且為了同時滿足既能安全降落停機又能降低遊艇高度以便順利通過澳洲伯斯較低橋樑的雙重需求，嘉鴻還特地建造一個可折疊的液壓雷達拱。



Horizon is proud to be a yacht builder who is willing to take on new challenges and we do not stop there. We keep evolving and improving our models based on feedback from our clients and dealer partners, and continuously fine-tune the design, layouts, and performance to fit every owner's boating lifestyle. To us, building a yacht – or rather – building a dream with our clients is an enjoyable journey. We fulfill these dreams with yachts that are safe, stylish, luxurious and designed for relaxation and enjoyment.

With every delivery, our happy owners share their joy and excitement with us. We know that these are the important moments for them and their family, and that they'll continue to share with us their many wonderful cruising memories. It's our dream to deliver yours. ➡





嘉鴻遊艇集團以成為一個願意接受新挑戰的遊艇製造商而自豪，但除此之外，我們還是繼續根據客戶和經銷商合作夥伴的反饋意見，不斷改良和精進我們的船型，並不斷微調設計、格局和性能，以求能滿足每位船主的遊艇生活型態。對我們而言，建造一艘遊艇，或者更確切地說，與客戶共同構築一個夢想，是一趟愉快的旅程。而我們就是透過安全、時尚、豪華，而且可以讓船主輕鬆享受愉悅海上休閒生活的遊艇來實現這些夢想。

每次交船，快樂的船主都會與我們一起分享他們的喜悅和興奮之情。我們知道這對他們和家人是多麼重要的時刻，也知道他們以後還會跟我們分享許多美好的航遊體驗。有夢最美，而讓所有客戶的美夢成真就是我們的夢想。 ➡





主題活動
FEATURE
EVENT

CLASSIC NEW ENGLAND FUN AT THE 2018 HORIZON YACHTS OWNER RENDEZVOUS IN NEWPORT, RHODE ISLAND

2018 HORIZON YACHTS OWNER RENDEZVOUS : A sailing excursion on America's Cup 12 meter yachts, playing croquet at the world renowned Newport Tennis Hall of Fame, dinner/dancing at the famed Castle Hill Mansion, and a 5 star Clambake... these are but a few of the incredible activities we enjoyed!



2018 HORIZON 船主聚會 洋溢經典新英格蘭風情 美國·羅德島·紐波特

2018 HORIZON 遊艇船主聚會活動：美洲盃 12 米級單桅帆船競賽體驗、莊園豪宅參觀、在世界知名紐波特網球名人堂打槌球、在歷史悠久的城堡坡莊園享用晚餐/跳舞、5 星級烤蛤野宴 這僅是眾多精采活動中的幾項而已！

主題活動
FEATURE
EVENT



68

Newport, Rhode Island, the quintessential New England sailing town, was the location of choice for the Horizon 2018 Rendezvous, held July 26 - 29th with eight events planned to keep our Horizon Yacht owners entertained. Newport is set on Aquidneck Island in the state of Rhode Island and is known not only for its famous Gilded Age mansions, but also for hosting the world-renowned competitive America's Cup regatta. Newport's rich history, combined with the exciting events planned for our guests made this year's rendezvous a very special and fun-packed four days both on and off the water.





羅 德島的紐波特是典型的新英格蘭帆船城，也是嘉鴻遊艇集團於 2018 年 7 月 26 至 29 日舉辦 Horizon 船主遊艇饗宴活動的地點。嘉鴻一共策劃了 8 個別出心裁的活動，讓船主貴賓盡情歡樂，共度愉快的遊艇假期。紐波特位於羅德島州的 Aquidneck 島上，不僅以著名的鍍金時期豪宅而聞名，也因為舉辦世界知名的美洲盃帆船賽而聲名大噪。其豐富且深具特色的歷史文化遺產，加上嘉鴻為貴賓安排的各種精采活動，讓 2018 年的 Horizon 船主聚會顯得非常特別及有趣，不管是水上競賽還是陸上活動，都讓與會貴賓留下難忘的歡樂回憶。





70

Nine Horizon yachts made their way to Gurney's Newport Resort and Marina, an upscale property situated on historic Goat Island and located in the heart of Newport Harbor, surrounded by beautiful Narragansett Bay. The resort grounds offer 360-degree water views, providing a perfect setting for our rendezvous! Thirteen groups of Horizon yacht owners were present, some of them residing at the resort while others stayed aboard their yachts. The total number of guests was 70, an impressive number given the distance many had to travel. The owners of *Diamond seas* traveled the greatest distance to the rendezvous, leaving their beloved Horizon E88 at home in California to join the festivities.

Over the next four beautiful New England days, fun and frolic prevailed. On Day One the owners were met with a welcome brunch "docktail" at Gurney's Scarpetta restaurant, where the mimosas flowed and snacks followed as owners and guests mingled. Later that evening, guests were ushered down Ocean Drive to Castle Hill, an historic Newport Hotel and event site situated on the scenic cliffs of Newport Harbor. There, the venue hosted a private cocktail party on the lawn punctuated by a gorgeous sunset and panoramic views. Dinner was followed by dancing to the live entertainment provided by Newport's talented musicians. What a magical way to spend our first rendezvous night!





參加此次聚會的九艘 Horizon 遊艇，集結在 Gurney 的紐波特碼頭渡假村。它坐落在歷史上知名的山羊島上，位於紐波特港口的中心位置且被美麗的 Narragansett 海灣環繞。度假村擁有 360 度無敵海景視野，為我們此次的聚會活動提供絕佳環境！總共有來自各地的 13 組 Horizon 船主及其貴賓參與盛會，其中有些選擇住在度假村，有些則住在自己的遊艇上。這次的賓客總數為 70，是一個令人印象深刻的數字，跟許多貴賓來到此處的距離差不多，而來自加州的 *Diamond seas* 的船主距離最遠，因此他們選擇將 88 英尺 Horizon 遊艇留在加州，然後飛來東岸參加這次的活動，輕鬆享受住在 Gurney 的悠閒時光。



在接下來 4 天美好的「新英格蘭」日子裡，充滿了歡樂和嬉笑。首先在第一天，所有的船主貴賓在 Gurney 的 Scarpetta 餐廳會合，一邊寒暄一邊享用「docktail」早午餐，品嚐一道道沿著滿室含羞草呈上的美味餐點。到了黃昏時分，我們就順著海洋大道走到 Castle Hill 城堡坡莊園 - 這是紐波特一個歷史悠久的酒店，坐落在風景秀麗的紐波特港口懸崖上。我們在可眺望 360 度遼闊海景的草坪上舉辦雞尾酒會，在絢爛夕陽餘暉映照下，打開話匣子暢所欲言，而此起彼落的話語聲伴隨著歡笑聲，就隨風飄揚在舒暢無比的大自然環境中。等到晚宴過後，一些才華洋溢的紐波特樂手在現場演奏起曼妙的音樂，而大夥就紛紛隨之起舞，好不歡樂。用這樣的方式度過相聚的第一個夜晚著實很棒！

On Friday, Day Two, owners and guests met on the dock for the America's Cup sailing challenge – one of the most anticipated events! The group was divided into 5 crews to race on the historic fleet of America's cup classic 12 Meter yachts. The regatta sail with a refreshing breeze and the typical Newport morning fog blowing in from time to time, which made for great photographs! Each of the 12s had a skipper and working crew but didn't hesitate to put the good Horizon people to work as they tacked up the Bay, complete with a dramatic passage under the Newport Bridge. The race around Narragansett Bay was a nail biter, but in the end, *WEATHERLY* crossed the finish line first to become the Horizon Cup winner!



After a luncheon aboard, guests made their way to the Clark Cooke House, an iconic Newport restaurant and watering hole located on Bannister's Wharf, where the cocktails and appetizers flowed while a very spirited race day awards ceremony was held. The *WEATHERLY* team was crowned for their winning race and Horizon MVPs were recognized: Bill Wassmer (*HERITAGE*), Brian Griley (*COLUMBIA*), Norda Berger and Rhonda Bauer (*AMERICAN EAGLE*), and Cyril Silberman (*WEATHERLY*). The day finished with some downtown Newport shopping for nautical treasures. Friday night was a free night for the tired mariners to rest up for the next day's activities!

第二天 (星期五) · 船主和賓客齊聚碼頭，準備進行一場備受眾人期待的美洲盃帆船挑戰賽。大夥兒被分成 5 組，分別搭乘經典的美洲盃 12 米級單桅帆船，在清新的微風和不時飄來的紐波特典型晨霧中解纜起航。這是能拍出最佳照片記錄這難得體驗的氛圍和情境！在航程中，雖然每一艘 12 級帆船都配有船長和一組船員，但我們的 Horizon 遊艇好手也毫不猶豫地在海灣搶風轉變航向時加入戰鬥，演出一場充滿戲劇性的穿越紐波特大橋的精采航行。尤其，在 Narragansett 海灣的競賽非常的緊張刺激，但最後還是由 **WEATHERLY 上風號** 率先越過終點線，成為嘉鴻盃 (Horizon Cup) 的冠軍。

大夥兒在船上用過午餐後，就前往 Clark Cooke House，這是一家在 Bannister 碼頭深具指標性的紐波特餐廳酒吧。我們在這裡品嚐雞尾酒和點心，並為當日的激烈競賽舉辦頒獎典禮為 **WEATHERLY 上風號** 團隊冠軍加冕，並選出這場比賽的 MVP：**HERITAGE 傳統號** 的 Bill Wassmer、**COLUMBIA 哥倫比亞號** 的 Brian Griley、**AMERICAN EAGLE 美洲飛鷹號** 的 Norda Berger 和 Rhonda Bauer，以及 **WEATHERLY 上風號** 的 Cyril Silberman。之後，我們到紐波特市中心閒逛，尋找各種航海寶藏，然後結束這興奮無比的一天。對於疲憊的水手來說，這個星期五晚上是一個自在隨興的夜晚，適合好好休息迎接明天更精采的活動。



主題活動
FEATURE
EVENT

74

Day 3, Saturday, was a beautiful, sunny day for the event planned at the International Tennis Hall of Fame. Decked out in their finest garden party attire, the owners and guests were shuttled over to the venue for an 11:00a.m. brunch, complete with build-your-own-Bloody Marys (which were meals unto themselves!) and mimosas accompanied by a delicious buffet. After the brunch the group participated in learning the finer points of croquet by the “masters” at the club and then it was “Game On”. Everyone took to the croquet courts and had a ball - no pun intended! A special prize for the Best Hat recognized the creative endeavors of the owners of *HELM'S AWAY*.



Upon departing croquet, we divided into two groups to tour the amazing Gilded Age summer “cottages” - Vanderbilt’s The Breakers and Marble House. Construction of The Breakers was completed in 1895 by Cornelius Vanderbilt and was the most opulent house in Newport at that time. Marble House was built as a summer residence between 1888 and 1892 by the younger Vanderbilt brother, William, and his wife Alva. Talk about keeping up with the Jones! That evening, guests headed downtown for dinner and nightlife or kicked back at the resort and marina.





第三天 (星期六) · 是一個陽光燦爛的日子 · 很適合安排在網球名人堂的活動 · 我們穿著最得體的花園派對服裝 · 坐上接駁巴士到網球名人堂享用11:00的早午餐 · 大家在清新的黃色含羞草景觀中 · 用自行調理的血腥瑪麗 (這本身就是一道餐點!) 結束這頓美味的自助餐 · 在早午餐後 · 大夥兒一起參加由俱樂部「大師」傳授的槌球密技 · 之後就到槌球場進行實際比賽 · 設法用自己的球來擊走對方的球 · 而最後獲頒「最佳帽子特別獎」的是 *HELM'S AWAY* 的船主 ·

接下來 · 在離開網球名人堂時 · 我們分成兩組參觀令人讚嘆的鍍金時期的夏季度假屋 — 范德比爾特 (Vanderbilt) 的 The Breakers 和 Marble House · The Breakers 於 1895 年由 Cornelius Vanderbilt 建造完成 · 是當時紐波特最豪華的房子 · Marble House 則是在 1888 年至 1892 年間 · 由弟弟 William Vanderbilt 和他的妻子 Alva 建造 · 做為夏天避暑的別墅 · 這天晚上 · 大多數人都去市中心吃晚餐和體驗當地夜生活 · 有些賓客則選擇回到碼頭度假村放鬆休息 ·



主題活動
FEATURE
EVENT

76



Sunday, Day 4: another beautiful day that was perfect for a roaring 20's floating yacht hop and aft deck decorating & costume contest held at Gurney's Marina! Everyone looked so dapper and cool dressed in their 1920's outfits – it truly appeared as if the flappers and gangsters were out on the docks waiting for the Rum Runners to arrive. Thankfully no prohibition here - drinks flowed and hors d'oeuvres were enjoyed both on the yachts and on the docks, for a roaring afternoon of good ol' fashioned fun!



星期日，是另一個美好的一天，非常適合在 Gurney 碼頭舉行 20 年代絢麗風華的遊艇後甲板裝飾及服裝比賽，以及遊艇參觀活動。當大家穿上 1920 年代服裝出現在碼頭時，就像那個咆哮年代特立獨行的女子和黑幫型男正等待一杯船長蘭姆酒 (Rum Runners) 一樣，看起來非常瀟灑有型。很慶幸在這裡沒有任何的限制，大家可以在遊艇和碼頭上盡情享受美味點心及各式調酒，度過一個重現咆哮年代時尚的美好午后時光！



主題活動
FEATURE
EVENT

78



Saving the best for last, the farewell clambake was held on the private lawn at Gurney's overlooking Narragansett Bay and the Newport Bridge. Guests were treated to another beautiful sunset and evening under the stars where all gathered to watch how the experts do a real New England clambake: dig a pit, throw in tons of seaweed, add 130 pounds of lobster along with some clams, shrimp, and corn on the cob and then fire it up and bake to perfection! It was a marvelous treat and fitting last meal together where old friends were reacquainted and new friendships were forged. We also took a moment to recognize our outstanding yacht hop contestants, who all took their skills to the next level for a truly competitive contest. *DO IT NOW* was awarded the Best Costume and Boat Décor; the Seediest Speakeasy award went to *SKYLINE* and *STARR* took home the award for the Best Cocktail! After the delicious meal, guests danced away the night to the music of another amazing Newport band. The final farewell moment of the evening came as the moon rose over the fleet of Horizons in the still water at Gurney's Marina.



最後，在俯瞰 Narragansett 海灣和紐波特大橋的 Gurney 私人草坪上，我們舉辦壓軸的「烤蛤野餐會」，做為這次 Horizon 船主聚會活動的道別晚宴。從絢爛夕陽到星光夜晚，大家聚在一起，看專家如何做道地的新英格蘭烤蛤：先挖一個洞，放進大量的海藻，再加入 130 磅龍蝦、蛤蜊、蝦子、玉米棒等，然後用火燒烤到完美！這真是不可思議的美味享受，很適合老朋友相聚以及結交新朋友的餐會。另外，我們也利用時間表揚今天出色的參賽者，他們的才藝已提升到可以參加真正比賽的水準了——奪得「最佳服裝」和「遊艇裝飾」大獎的是 *DO IT NOW*，而 *SKYLINE* 獲得「最底層地下酒吧獎」，*STARR* 則捧回「最佳雞尾酒獎」。在享用完美味的一餐後，我們在另一組很棒的紐波特樂隊伴奏下翩然起舞，直到夜幕低垂。當月亮悄悄爬上靜靜徜徉在 Gurney 碼頭的 Horizon 船隊上空時，大家互道珍重再會，告別這迷人的最後一夜。



With beautiful scenery, amazing experiences, and lobster galore, the 2018 Horizon Yachts Owner Rendezvous was a truly fantastic long weekend spent celebrating our owners, guests, and the Horizon yachting lifestyle – and we wouldn't have it any other way! ➡

2018 Horizon 船主遊艇饗宴在美麗的風景、精采的活動以及豐富的龍蝦美味中劃下了完美的句點。我們的船主及貴賓享受了一個 Horizon 遊艇休閒的夢幻周末長假 – 還有甚麼比這更棒的呢！➡





17", 22" or 24" INTUITIVE TOUCHSCREEN BLUECHART® G2 VISION HD® AUTO GUIDANCE GARMIN MARINE NETWORK AND NMEA 2000®



GPSMAP® 8600 MFD SERIES

GARMIN®



+1 604.272.1305



+1 360.398.8228



+1 888.828.5765

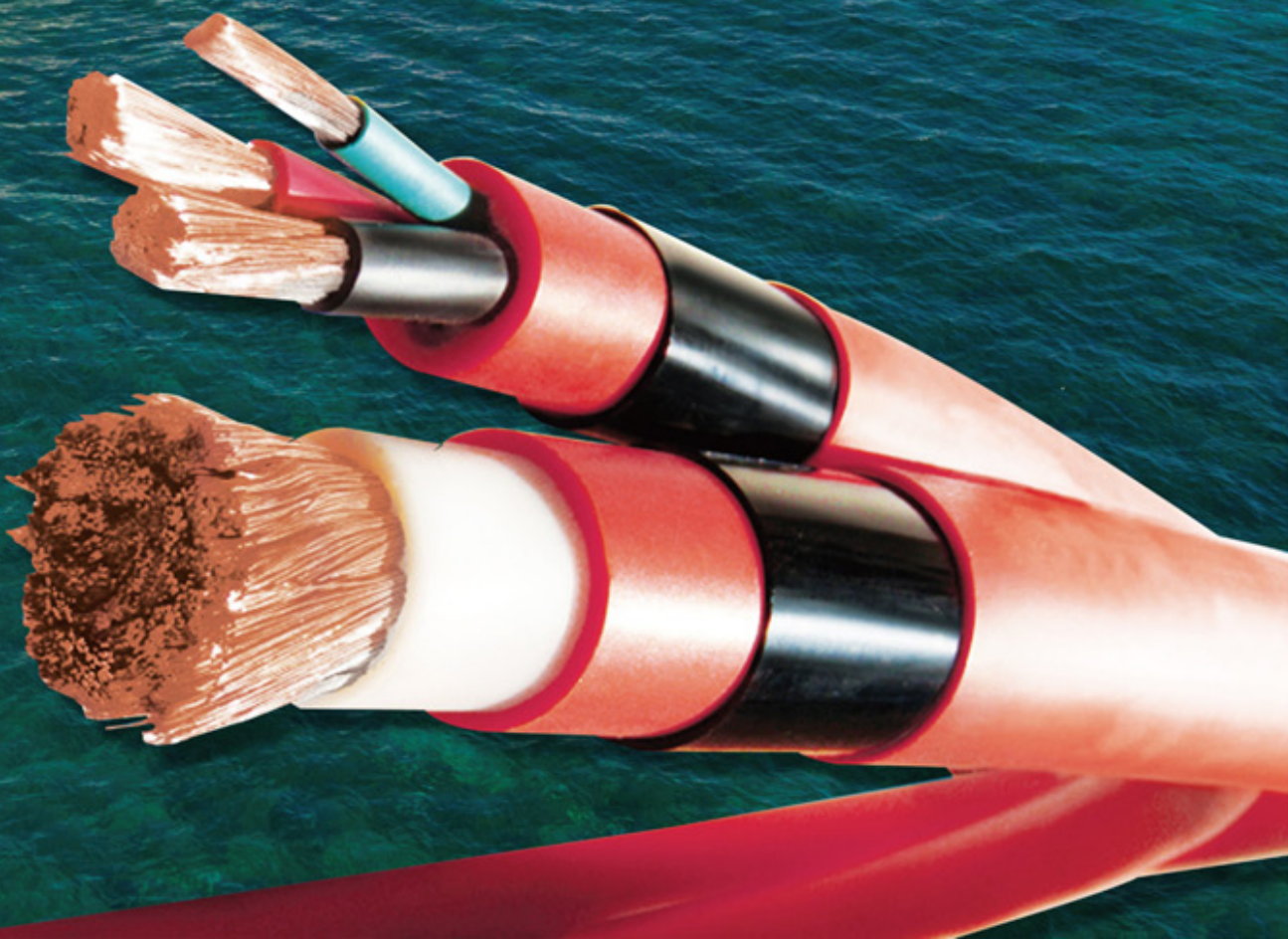


www.vertex-marine.com



Vertex
MARINE

SUPERIOR
MARINE
CABLE
SOLUTIONS



FLEXIBLE FINE STRANDED



A SHOWCASE OF VERSATILITY HORIZON STANDS OUT AT THE 2018 FORT LAUDERDALE INTERNATIONAL BOAT SHOW

On the third evening of the 59th annual Fort Lauderdale International Boat Show, the Horizon Yachts stand was filled to capacity. Guests, owners and potential clients chatted over canapés and cocktails, and music filled the air as visitors toured the showcase of exceptional Horizon yachts on display. Among the guests were world-renowned designers Cor D. Rover, J.C. Espinosa, and Jonathan Quinn Barnett (JQB), who offered insight into their distinct designs – the FD Series, the PC Series, and the V68, respectively.



多款船型展現多樣魅力

HORIZON 遊艇在 2018 羅德岱堡國際遊艇展脫穎而出

在

第 59 屆羅德岱堡國際遊艇展的第三個晚上，人潮佔據 Horizon 展位每個角落。嘉鴻的船主、貴賓和潛在客戶齊聚一堂，在歡樂輕快的音樂背景下，一邊品嚐雞尾酒和可口點心，一邊參觀嘉鴻遊艇集團展示的多款各具特色的遊艇。所有賓客在此起彼落的談笑聲中，度過一個有型有款，多采多姿的愉快夜晚。嘉賓中還包括世界知名遊艇設計師 Cor D. Rover、JC Espinosa 和 Jonathan Quinn Barnett (JQB)，他們分別將各自對設計的專業及獨特才華貢獻給 Horizon FD 系列、PC 系列和 V68 遊艇。

船展花絮
BOAT
SHOW

The Fort Lauderdale International Boat Show, held October 31 – November 4th, reported a near-record number of attendees this year, retaining its reputed position as the largest on-water boat show in the world. Horizon's prominent position on a busy thoroughfare and diverse showcase of stunning yachts drew admirers and potential buyers alike.

Among the Horizon Yachts showcase – which included the Horizon power catamarans, the debuting JQB-designed V68, a brand new E88, and the head-turning FD85 – was the fourth yacht to be delivered to its new owners: the CC115 *Adagio*. Visitors to this brand new custom yacht remarked on the entertainment possibilities and impressive headroom found throughout the five-stateroom layout, as well as the fully bespoke interior design highlighted by custom Italian Listone Giordano woodwork and executed in collaboration with design studio Taller ADG.

86





2018 美國羅德岱堡國際遊艇展於 10 月 31 日至 11 月 4 日舉行，這屆的參觀人數離最高紀錄僅一步之遙，但仍穩居全球最大水上遊艇展的地位。今年，Horizon 展位仍位在人潮擁擠通道的明顯位置，加上展出多款令人讚嘆的時尚遊艇，因此吸引眾多仰慕者和潛在買家前來參觀造訪。

嘉鴻展示的多款豪華遊艇包括：Horizon PC 動力雙體船、首次亮相由 JQB 設計的 Horizon V68 遊艇，全新的 Horizon E88 動力遊艇、以獨特造型引人注目的 Horizon FD85 快速巡航型遊艇，以及一艘剛交給船主的 Horizon CC115 *Adagio* 客製豪華遊艇。這艘 CC115 *Adagio* 是船主的第四艘 Horizon 遊艇，而參觀過的賓客對這艘全新客製豪華遊艇熱議的焦點集中在多樣化的休閒娛樂功能、寬敞的五房格局規劃，以及令人印象深刻的艙房高度。尤其，由嘉鴻與 Taller ADG 設計工作室合作的以義大利 Listone Giordano 訂製實木木作做為主要裝潢的室內設計，更獲得賓客的極度讚賞。





The debut of the Horizon V68 held particular significance, conceived as a “mini superyacht” designed from stem to stern to incorporate every amenity desired aboard a large, long-range yacht and the result of a long collaboration between the yard and designer Jonathan Quinn Barnett. Distinguished by a plumb bow and wide beam, the V68 offers a three or four-cabin layout with a private and spacious master suite located midship. Optional quarters for crew are situated aft. On the main deck, the design emphasizes unobstructed views to enhance the feeling of spaciousness with an open salon that flows into a large joined galley and country kitchen; the main deck can also be configured with a country kitchen or lower helm forward.

Of course, the exceedingly popular Horizon Fast Displacement Series was on the minds of many interested clients, who came to tour the FD85 on display and stayed to chat about the FD77, FD87 and FD102 motoryachts.

Another significant debut, the new PC65 is the first of a new series featuring an advanced hull design that is the culmination of decades of catamaran hull development, tank testing and CFD analysis. Versatile in design, the PC65 is offered in either Open Flybridge or Skylounge versions with several layout and custom interior options. Powered by twin CAT C12-9 diesels, this powercat boasts an impressive top speed of 26 knots and excellent stability, thanks to her optimized hull form.





另外，Horizon V68 的首次亮相也別具意義。這艘以「迷你版超級遊艇」為設計概念的動力遊艇，擁有大型遠程巡航遊艇具備的所有便利設施，是船廠與 Jonathan Quinn Barnett 設計師經過長時間密切合作的成果。V68 擁有獨特戰斧型船艏和大船寬設計，可提供包含一間位在船艙具隱密性且寬敞的主人房的三房或四房格局規劃，而若需要，船主也可選擇在後艙規劃一間船員房。此外，V68 的主甲板層強調一覽無遺的開闊視野以增加寬敞的空間感，因此規劃成開放式沙龍與寬大的廚房及用餐區，而廚房前方的空間，除了可設計成用餐區之外，也可依船主要求規劃成下駕駛台。

當然，極受歡迎的 Horizon FD 快速巡航型遊艇系列也是許多賓客不願錯過的目標，而他們不只參觀展出的 FD85 船型，也一併詢問商討 FD77、FD87 和 FD102 等同系列遊艇。

另一個重要的展出，則是全新 Horizon PC65 雙體船的首秀。這是該船型的第一艘成品，擁有雙體船殼、船模測試以及 CFD 流體力學分析等經過數十年發展歷程所凝聚的精華研發出來的最先進船體設計。當此優化船體配備兩部 CAT C12-9 引擎時，PC65 可達到 26 節最高速的出色表現，且具備絕佳的航行平穩度。這款 PC65 船型有各種多樣化設計，提供開放式和包覆式兩種船橋造型選擇，並搭配多種格局配置和客製化內裝。

Overall, a celebratory mood pervaded the five-day show, as Horizon commemorated the delivery of four brand new yachts with champagne toasts and gift baskets. Three Horizon PowerCats were turned over to their enthusiastic owners during the show: the PC52 *Eternity*; the abovementioned PC65 *POMBOO*, built for two-time repeat Horizon owners; and the largest power catamaran, the PC74 *Sea Glass*, built for repeat owners who moved up from a PC60.

Horizon CEO John Lu commented on the success of the show, saying, “The number of current clients and qualified buyers visiting our showcase during the Fort Lauderdale Boat show demonstrated the strength of Horizon’s offerings while further underscoring the strength of the global yachting industry. We enjoyed celebrating the achievement of each yacht debut and delivering them to their proud owners.” ➡

總而言之，這為期五天的展會因為嘉鴻先後舉行四艘全新遊艇的交船儀式，並特地準備了香檳和禮品籃，因此時時瀰漫著慶祝的歡樂氛圍。在船展期間，嘉鴻共交付三艘 Horizon 雙體船給熱烈期待的船主，包括一艘 PC52 *Eternity*、一艘上述提到的 PC65 *POMBOO* 給三度購買的船主，以及一艘此系列最大的旗艦雙體船 PC74 *Sea Glass*，這是該船主自上一艘 PC60 後再度購買的更大型雙體船。

「在今天的羅德岱堡船展期間，參觀我們遊艇的客戶和買家的人數，以及他們的認真程度，在證明我們 Horizon 遊艇的產品優勢，同時也進一步顯現全球遊艇產業的實力。對我們而言，每艘遊艇的首次亮相都值得慶祝，尤其還能將它們交給引頸期待的船主，更是一件令人高興的事。我們很享受這種時刻，並且樂在其中！」對這次展會的圓滿表現，嘉鴻遊艇集團呂佳揚執行長表達了上述的心情與結論。 ➡





Horizon Yachts at FLIBS – By The Numbers

5 days

3 Horizon yacht debuts

4 Horizon yacht deliveries

3 world-renowned designers

110,000 yachting and boating enthusiasts

Horizon 遊艇在羅德岱堡遊艇展速覽表

5 天展期

3 艘 Horizon 遊艇首秀

4 艘全新 Horizon 遊艇交付船主

3 位世界知名遊艇設計師齊聚

110,000 位熱愛遊艇休閒的遊艇玩家參與



YOUR DREAM YACHT IS WAITING

即刻擁有一 HORIZON 精選現船

Browse a selection of beautiful Horizon yachts available immediately – your dream yacht is waiting!

擁有夢想中的遊艇，不再需要等待；嘉鴻遊艇集團精選現船，現在下訂，就能立即擁有。



HORIZON RP110 SUPERYACHT AVAILABLE – ISLAND FRIENDLY CRUISING!

- Alfresco entertaining + stern garage
- Voluminous 25' beam
- On-Deck Master + en suite head
- Four guest staterooms + bow crew quarters
- 6' Draft for extended cruising capabilities
- Twin CAT C32A 1900HP engines

HORIZON YACHT EUROPE
+34 971 673 508 | sales@horizonyachteurope.com



HORIZON V81 MOTORYACHT AVAILABLE – ENHANCED EFFICIENCY!

- Custom-built luxury motoryacht
- Contemporary design with modern styling
- Long-range seakeeping abilities & endless entertaining
- Generous 20' 6" beam for unparalleled interior volume
- Three stateroom layout w/ full-beam Master + crew
- Seamless flow from the salon, galley & dinette

HORIZON YACHT AUSTRALIA
+61 7 5577 9009 | sales@horizonyachtaus.com

Featured Horizons For Sale



HORIZON FD87 SKYLINE MOTORYACHT AVAILABLE – BEACH CLUB LIVING AWAITS!

- An oasis of luxury and relaxation in 87 feet
- Enclosed skylounge
- Expansive 23'3" beam
- On-deck Master or below-deck stateroom
- High Performance Piercing Bow (HPPB) design
- Twin MTU 1600HP engines

HORIZON YACHT USA
+1 561 721 4850 | sales@horizonyachtusa.com



HORIZON FD77 MOTORYACHT AVAILABLE 2019 – CUTTING EDGE!

- New design for FD series
- Tooling in production
- Spacious 23' beam
- 4 en suite staterooms + crew
- Offered in open bridge & skylounge
- Twin MAN V8 1200HP engines

HORIZON YACHT USA
+1 561 721 4850 | sales@horizonyachtusa.com



HORIZON V68 MOTORYACHT AVAILABLE – SUPERYACHT STYLE!

- New model design from Jonathan Quinn Barnett
- Open flybridge w/ dayhead
- Beach club design + Hi/Lo swim platform
- Three spacious en suite staterooms
- Twin CAT C18A 1136 HP engines
- Zero speed stabilizers + bow/stern thrusters

HORIZON YACHT USA
+1 561 721 4850 | sales@horizonyachtusa.com



HORIZON E88 MOTORYACHT AVAILABLE – BEACH CLUB FUN!

- Enclosed skylounge design
- Beach club + Hi/Lo swim platform
- Alfresco lounge seating on boat deck
- 4 en suite staterooms + crew
- Twin MAN 1800HP engines
- Zero speed stabilizers + bow/stern thrusters

HORIZON YACHT USA
+1 561 721 4850 | sales@horizonyachtusa.com

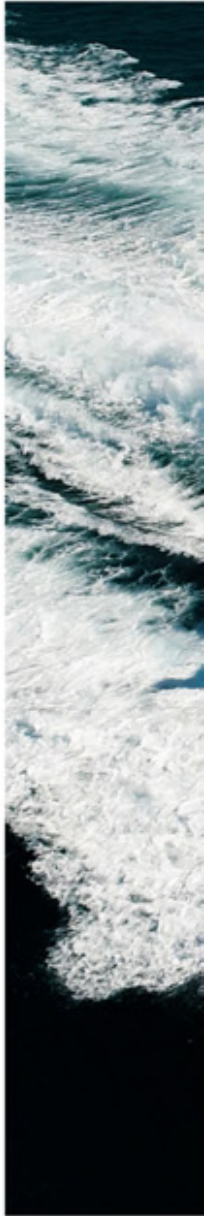


Hull nine of the FD87 Skyline and hull one of the FD77 are currently in sea trials and dockside tests under strict QC guidelines. The extensive testing will be completed soon in anticipation of their debuts at the upcoming 2019 Palm Beach International Boat Show, scheduled for March 28th – 31st.

Horizon Yacht will also display the new Horizon E88, V68 and PC Series at the same time. If you would like to make an appointment to view these luxury yachts, please contact Horizon Yacht USA at 561-721-4850 or sales@horizonyachtusa.com. We hope to see you there!

全新 Horizon FD87 Skyline 九號船與 FD77 一號船皆已進入最後檢測階段，將於 2019 年美國棕櫚灘船展亮相，日期為 2019 年 3 月 28 日至 31 日。相信展出時定會受到許多潛在船主的青睞！嘉鴻遊艇集團同時亦將展出多艘 Horizon 遊艇，包含優雅經典船型 Horizon E88、全新 Horizon V68 及暢銷的雙艙體船型 PC 系列。

若貴賓欲上船參觀 Horizon 在美國棕櫚灘船展所展出的船型，歡迎電洽美國 Horizon 遊艇 561-721-4850 或 Email 至 sales@horizonyachtusa.com 預約。嘉鴻遊艇集團期待與您相遇！



**2019 PALM BEACH
INTERNATIONAL BOAT SHOW
MAR 28 – MAR 31, 2019**



Multi-Functional Exterior Areas



Main Salon – Contemporary Design with a Touch of the Ocean



Full Beam On-Deck Master Stateroom – Spacious and Bright



The RP110 can be viewed in Mallorca. For an appointment or more information, please contact Tom Boogaard at sales@horizonyachteurope.com

立即預約賞船 — Horizon RP110 現於西班牙馬約卡島 (Mallorca) · 欲預約賞船或了解更多詳情 · 請聯絡嘉鴻遊艇集團行銷中心 marketingcenter@horizonyacht.com

HORIZON RP110

Style. Luxury. Performance.





THE HORIZON SERVICE AND REFIT FACILITY

巨型遊艇維修/改裝中心

A NEW LEVEL OF SERVICE FOR OUR CLIENTS
嘉鴻遊艇集團服務新領域

Horizon Group is now offering maintenance, repair, and refit services for 100ft-plus yachts at our Refit Center in the Premier Shipyard. The Refit Center provides 656ft (200m) of waterfront property; a floating dry dock with a 500T lift capacity; dry bays for 6 superyachts up to 120 feet, and 24,000 square meters of private yard space. We have been building yachts in excess of 110 feet and to DNV, BV, Lloyd's, and ABS classification for the past 10 years, and the Refit Center combines these features and capabilities together to provide a tremendous advantage for easy launch and retrieval, commissioning, final classification sea trials, and surveying for yachts. With more than 30 years of yacht building experience, Horizon is equipped to provide important refit services to our clients.

憑藉亞洲最大及全球前五大客製化豪華遊艇製造商的實力、專業的頂尖人才以及先進的設施，嘉鴻遊艇集團成功跨足遊艇市場另一個新領域，成為巨型豪華遊艇在亞洲的維修/改裝基地，提供 100 英尺以上豪華遊艇的保養、維修及改裝服務。嘉鴻遊艇集團維修/改裝中心濱臨高雄港，擁有 656 英尺（約200米）的水岸碼頭、可承重 500 噸的浮式乾船塢、可同時停放 6 艘 120 英尺超級遊艇的碼頭空間，以及可供停放 10 艘 160 英尺超級遊艇的 24,000 平方公尺寬敞陸地，其中 5 艘還可停放在遮蔽式廠房。擁有超過 30 年專業造船經驗，建造超過 140 艘依據 DNV、BV、Lloyds 等國際船級協會建造規格認證的豪華遊艇，嘉鴻遊艇集團實力堅強的工程、設計及建造團隊，為巨型豪華遊艇船主提供以下服務：

HORIZON 嘉鴻遊艇集團








- Haul out capabilities • Hull structure modifications • Interior modifications
- Painting • Naval Architecture services • Class Approval
- 船體牽引、船艇結構改造 • 船內裝改造、油漆 • 造船服務
- 國際船體認證 • 客製化維修裝改服務

HORIZON GROUP 嘉鴻遊艇集團
WWW.HORIZONYACHT.COM | Tel | +886 7 8607770 | info@horizonyacht.com


HORIZON
WORLD CLASS YACHTS

MEMBERS of HORIZON GROUP

Horizon Group 嘉鴻遊艇集團

Horizon Shipyard 小港遊艇廠	Atech Composites 小港複合材料廠	Vision Shipyard 大發遊艇廠	Premier Shipyard 旗津遊艇廠	Horizon City Marina 亞灣遊艇碼頭
Since 1987 452,080 Sqft 創立於1987 42,000 平方公尺	Since 2000 249,070 Sqft 創立於2000 23,140 平方公尺	Since 2001 161,460 Sqft 創立於2001 15,000 平方公尺	Since 2005 258,330 Sqft 創立於2005 24,000 平方公尺	Since 2014 創立於2014
				
CNC Molding Center CNC 模具中心	Composite Lab 複合材料實驗中心	Interior Design Center 內裝設計中心	Delivery Center 交船中心	<ul style="list-style-type: none"> Accommodate yachts from 40 ft (12M) to 200 ft (60M) 可容納長度從12米到60米
				
Interior Design Center 內裝設計中心	Atech Technology Display Center FRP技術展示中心		Refit Center 維修中心	
				

Horizon Global Network



Fulfilling the yachting dreams of our ocean-loving clients



HORIZON FLEET



PC Series



52



60



65



74

EP Series



69



150

E Series



56



56xo



62



75



78



84



88



98



V Series



68



72



80

RP Series



97



110



120

P Series



110



140

FD Series



70



77



85



87



102



125

Fulfilling the yachting dreams of our ocean-loving clients

